

IGFBP-1 Rabbit pAb

CatalogNo: YT5567

Key Features

Host Species

- Rabbit

Reactivity

- Human, Mouse, Rat

Applications

- WB, IHC, IF, ELISA

MW

- 28kD (Observed)

Isotype

- IgG

Recommended Dilution Ratios

WB 1:500-1:2000

IHC: 1:100-1:300

ELISA 1:10000

IF 1:50-200

Storage

Storage*

-15°C to -25°C/1 year (Do not lower than -25°C)

Formulation

Liquid in PBS containing 50% glycerol, 0.5% BSA and 0.02% sodium azide.

Basic Information

Clonality

Polyclonal

Immunogen Information

Immunogen

The antiserum was produced against synthesized peptide derived from the Internal region of human IGFBP1. AA range: 91-140

Specificity

IGFBP1 Polyclonal Antibody detects endogenous levels of IGFBP1 protein.

Target Information

Gene name IGFBP1

Protein Name Insulin-like growth factor-binding protein 1

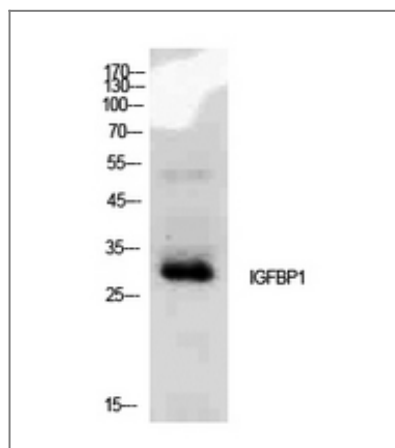
Organism	Gene ID	UniProt ID
Human	3484;	P08833;
Mouse	16006;	P47876;
Rat	25685;	P21743;

Cellular Localization Secreted.

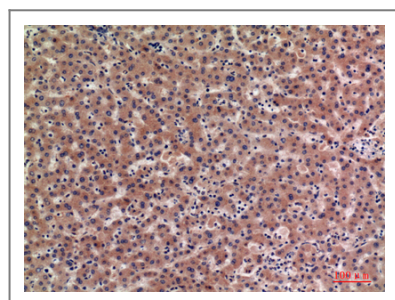
Tissue specificity Amniotic fluid,Decidua,Liver,Placenta,Skin,

Function Function:IGF-binding proteins prolong the half-life of the IGFs and have been shown to either inhibit or stimulate the growth promoting effects of the IGFs on cell culture. They alter the interaction of IGFs with their cell surface receptors. Promotes cell migration.,PTM:Phosphorylated; probably by casein kinase II. Alters the affinity of the protein for IGFs.,similarity:Contains 1 IGFBP N-terminal domain.,similarity:Contains 1 thyroglobulin type-1 domain.,subunit:Binds equally well IGF1 and IGF2.,

Validation Data



Western Blot analysis of MCF7 cells using IGFBP1 Polyclonal Antibody. Secondary antibody(catalog#:R50002) was diluted at 1:20000



Immunohistochemical analysis of paraffin-embedded human-liver, antibody was diluted at 1:100

Contact information

Orders: order@immunoway.com
Support: tech@immunoway.com
Telephone: 877-594-3616 (Toll Free), 408-747-0185
Website: <http://www.immunoway.com>
Address: 2200 Ringwood Ave San Jose, CA 95131 USA



Please scan the QR code
to access additional
product information:
IGFBP-1 Rabbit pAb

For Research Use Only. Not for Use in Diagnostic Procedures.

[Antibody](#) | [ELISA Kits](#) | [Protein](#) | [Reagents](#)