

AID Rabbit pAb

CatalogNo: YT5566

Orthogonal Validated 

Key Features

Host Species

- Rabbit

Reactivity

- Human, Mouse, Rat

Applications

- WB, IHC, IF, ELISA

MW

- 24kD (Observed)

Isotype

- IgG

Recommended Dilution Ratios

WB 1:500-1:2000**IHC: 1:100-1:300****ELISA 1:10000****IF 1:50-200**

Storage

Storage* -15°C to -25°C/1 year (Do not lower than -25°C)**Formulation** Liquid in PBS containing 50% glycerol, 0.5% BSA and 0.02% sodium azide.

Basic Information

Clonality Polyclonal

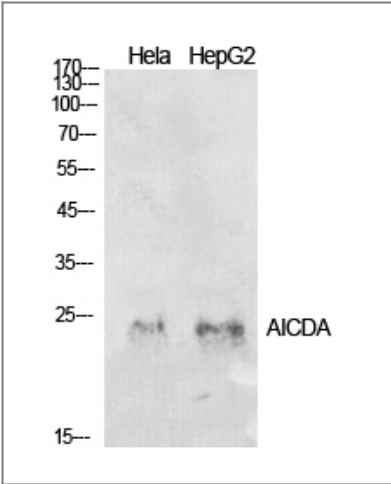
Immunogen Information

Immunogen The antiserum was produced against synthesized peptide derived from the Internal region of human AICDA. AA range: 81-130**Specificity** AID Polyclonal Antibody detects endogenous levels of AID protein.

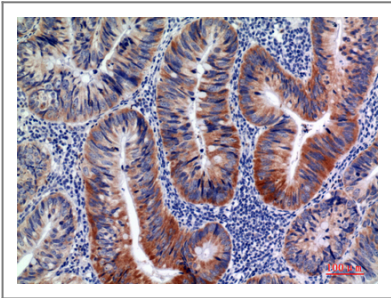
Target Information

Gene name	AICDA		
Protein Name	Activation-induced cytidine deaminase		
	Organism	Gene ID	UniProt ID
	Human	57379;	Q9GZX7;
	Mouse	11628;	Q9WVE0;
Cellular Localization	Nucleus . Cytoplasm . Predominantly cytoplasmic (PubMed:21385873). In the presence of MCM3AP/GANP, relocalizes to the nucleus (By similarity). .		
Tissue specificity	Strongly expressed in lymph nodes and tonsils.		
Function	Catalytic activity:Cytidine + H(2)O = uridine + NH(3).,cofactor:Zinc.,Disease:Defects in AICDA are the cause of autosomal recessive hyper-IgM immunodeficiency syndrome type 2 (HIGM2) [MIM:605258]. HIGM2 is characterized by normal or elevated serum IgM levels with absence of IgG, IgA, and IgE, resulting in a profound susceptibility to bacterial infections. HIGM2 causes the absence of Ig class switch recombination (CSR), the lack of Ig somatic hypermutations, and lymph node hyperplasia caused by the presence of giant germinal centers.,Function:RNA-editing deaminase involved in somatic hypermutation, gene conversion, and class-switch recombination. Required for several crucial steps of B-cell terminal differentiation necessary for efficient antibody responses.,online information:AICDA mutation db,similarity:Belongs to the cytidine and deoxycytidylate deaminase family.,tissue specificity:Strongly expressed in lymph nodes and tonsils.,		

Validation Data



Western Blot analysis of HeLa, HepG2 cells using AID Polyclonal Antibody. Secondary antibody(catalog#:RS0002) was diluted at 1:20000



Immunohistochemical analysis of paraffin-embedded human-colon-cancer, antibody was diluted at 1:100

| Contact information

Orders: order@immunoway.com
Support: tech@immunoway.com
Telephone: 877-594-3616 (Toll Free), 408-747-0185
Website: <http://www.immunoway.com>
Address: 2200 Ringwood Ave San Jose, CA 95131 USA



Please scan the QR code
to access additional
product information:
AID Rabbit pAb

For Research Use Only. Not for Use in Diagnostic Procedures.

[Antibody](#) | [ELISA Kits](#) | [Protein](#) | [Reagents](#)