

## IL-6R $\alpha$ Rabbit pAb

CatalogNo: YT5546

### Key Features

#### Host Species

- Rabbit

#### Reactivity

- Human, Rat

#### Applications

- WB, IHC, IF, ELISA

#### MW

- 53kD (Observed)

#### Isotype

- IgG

### Recommended Dilution Ratios

IHC: 100-300

WB 1:500-1:2000

ELISA 1:10000

IF 1:50-200

### Storage

#### Storage\*

-15°C to -25°C/1 year(Do not lower than -25°C)

#### Formulation

Liquid in PBS containing 50% glycerol, 0.5% BSA and 0.02% sodium azide.

### Basic Information

#### Clonality

Polyclonal

### Immunogen Information

#### Immunogen

The antiserum was produced against synthesized peptide derived from the Internal region of human IL6R. AA range:221-270

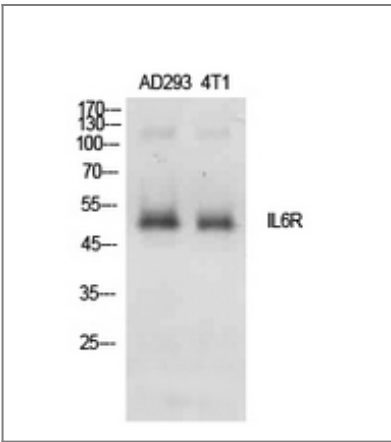
#### Specificity

IL-6R $\alpha$  Polyclonal Antibody detects endogenous levels of IL-6R $\alpha$  protein.

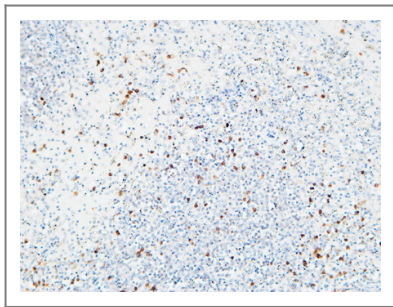
### Target Information

|                       |  |                        |                          |
|-----------------------|--|------------------------|--------------------------|
| Gene name             | IL6R   |                        |                          |
| Protein Name          | Interleukin-6 receptor subunit alpha   |                        |                          |
|                       | Organism   | Gene ID                | UniProt ID               |
|                       | Human  | <a href="#">3570</a> ; | <a href="#">P08887</a> ; |
|                       | Mouse  |                        | <a href="#">P22272</a> ; |
| Cellular Localization | [Isoform 1]: Cell membrane ; Single-pass type I membrane protein .; [Isoform 2]: Secreted .; [Soluble interleukin-6 receptor subunit alpha]: Secreted .  |                        |                          |
| Tissue specificity    | [Isoform 2]: Expressed in peripheral blood mononuclear cells and weakly found in urine and serum. 1%-20% of the total sIL6R in plasma is generated by alternative splicing (PubMed:28060820).  |                        |                          |
| Function              | Domain:The two fibronectin type-III-like domains, contained in the N-terminal part, form together a cytokine-binding domain.,Domain:The WSXWS motif appears to be necessary for proper protein folding and thereby efficient intracellular transport and cell-surface receptor binding.,Function:Low concentration of a soluble form of IL6 receptor acts as an agonist of IL6 activity.,Function:Part of the receptor for interleukin 6. Binds to IL6 with low affinity, but does not transduce a signal. Signal activation necessitate an association with IL6ST. Activation may lead to the regulation of the immune response, acute-phase reactions and hematopoiesis.,PTM:A short soluble form may also be released from the membrane by proteolysis.,similarity:Belongs to the type I cytokine receptor family. Type 3 subfamily.,similarity:Contains 1 fibronectin type-III domain.,similarity:Contains 1 Ig-like C2-type (immunoglobulin-like) domain.,subunit:Hexamer of two molecules each of IL6, IL6R and IL6ST.,tissue specificity:Isoform 2 is expressed in peripheral blood mononuclear cells and weakly found in urine and serum., |                        |                          |

| Validation Data



Western Blot analysis of AD293, 4T1 cells using IL-6Rα Polyclonal Antibody. Secondary antibody(catalog#:RS0002) was diluted at 1:20000



Immunohistochemical analysis of paraffin-embedded Human spleen. 1, Antibody was diluted at 1:200(4° overnight). 2, High-pressure and temperature EDTA, pH8.0 was used for antigen retrieval. 3,Secondary antibody was diluted at 1:200(room temperature, 30min).

## **| Contact information**

Orders: [order@immunoway.com](mailto:order@immunoway.com)  
Support: [tech@immunoway.com](mailto:tech@immunoway.com)  
Telephone: 877-594-3616 (Toll Free), 408-747-0185  
Website: <http://www.immunoway.com>  
Address: 2200 Ringwood Ave San Jose, CA 95131 USA



Please scan the QR code  
to access additional  
product information:  
**IL-6R $\alpha$  Rabbit pAb**

---

For Research Use Only. Not for Use in Diagnostic Procedures.

[Antibody](#) | [ELISA Kits](#) | [Protein](#) | [Reagents](#)