

PI 3-Kinase p110δ Rabbit pAb

CatalogNo: YT5537

Key Features

Host Species

- Rabbit

Reactivity

- Human, Mouse

Applications

- WB, IHC, IF, ELISA

MW

- 120kD (Observed)

Isotype

- IgG

Recommended Dilution Ratios

WB 1:500-1:2000

IHC: 1:100-1:300

ELISA 1:20000

IF 1:50-200

Storage

Storage*

-15°C to -25°C/1 year (Do not lower than -25°C)

Formulation

Liquid in PBS containing 50% glycerol, 0.5% BSA and 0.02% sodium azide.

Basic Information

Clonality

Polyclonal

Immunogen Information

Immunogen

The antiserum was produced against synthesized peptide derived from the N-terminal region of human PIK3CD. AA range: 41-90

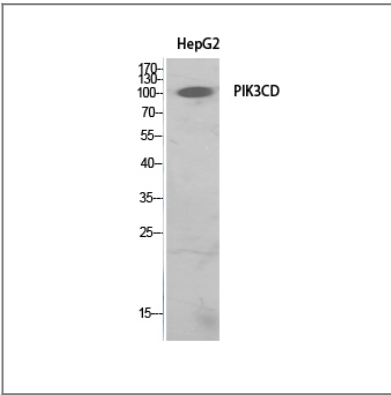
Specificity

PI 3-Kinase p110δ Polyclonal Antibody detects endogenous levels of PI 3-Kinase p110δ protein.

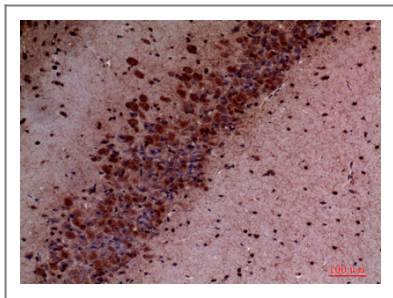
| Target Information

Gene name	PIK3CD		
Protein Name	Phosphatidylinositol 4,5-bisphosphate 3-kinase catalytic subunit delta isoform		
	Organism	Gene ID	UniProt ID
	Human	5293 ;	O00329 ;
	Mouse	18707 ;	O35904 ;
Cellular Localization	Cytoplasm .		
Tissue specificity	In humans, the highest levels of expression are seen in peripheral blood mononuclear cells, spleen, and thymus, and low levels of expression in testes, uterus, colon, and small intestine but not in other tissues examined including prostate, heart, brain, and liver (PubMed:9235916). Isoform 2 is expressed in normal thymus, lung and spleen tissues, and is detected at low levels in normal lysates from colon and ovarian biopsies, at elevated levels in lysates from colorectal tumors and is abundantly expressed in some ovarian tumors (at protein level). Both isoform 1 and isoform 2 are widely expressed. Isoform 1 is expressed predominantly in leukocytes.		
Function	Catalytic activity:ATP + 1-phosphatidyl-1D-myo-inositol 4,5-bisphosphate = ADP + 1-phosphatidyl-1D-myo-inositol 3,4,5-trisphosphate.,pathway:Phospholipid metabolism; phosphatidylinositol phosphate biosynthesis.,PTM:Autophosphorylation on Ser-1039 results in the almost complete inactivation of the lipid kinase activity.,similarity:Belongs to the PI3/PI4-kinase family.,similarity:Contains 1 PI3K/PI4K domain.,subunit:Heterodimer of a p110 (catalytic) and a p85 (regulatory) subunit. Interacts with ERAS.,tissue specificity:Expressed predominantly in leukocytes.,		

| Validation Data



Western Blot analysis of HepG2 cells using PI 3-Kinase p1106 Polyclonal Antibody. Secondary antibody(catalog#:R50002) was diluted at 1:20000



Immunohistochemical analysis of paraffin-embedded mouse-brain, antibody was diluted at 1:100

Contact information

Orders: order@immunoway.com
Support: tech@immunoway.com
Telephone: 877-594-3616 (Toll Free), 408-747-0185
Website: <http://www.immunoway.com>
Address: 2200 Ringwood Ave San Jose, CA 95131 USA



Please scan the QR code to access additional product information:
PI 3-Kinase p110δ
Rabbit pAb

For Research Use Only. Not for Use in Diagnostic Procedures.

[Antibody](#) | [ELISA Kits](#) | [Protein](#) | [Reagents](#)