

ALR Rabbit pAb

CatalogNo: YT5529

| Key Features

Host Species

- Rabbit

Reactivity

- Human, Mouse, Rat

Applications

- WB, IHC, IF, ELISA

MW

- 24kD (Observed)

Isotype

- IgG

| Recommended Dilution Ratios

WB 1:500-1:2000

IHC: 1:100-1:300

ELISA 1:20000

IF 1:50-200

| Storage

Storage* -15°C to -25°C/1 year (Do not lower than -25°C)

Formulation Liquid in PBS containing 50% glycerol, 0.5% BSA and 0.02% sodium azide.

| Basic Information

Clonality Polyclonal

| Immunogen Information

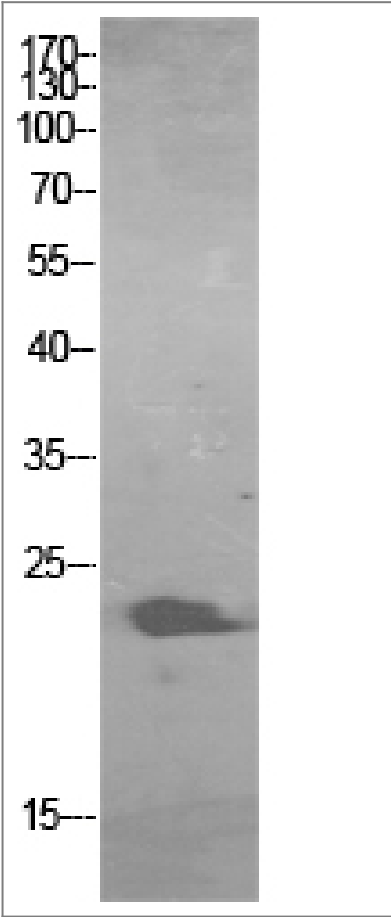
Immunogen The antiserum was produced against synthesized peptide derived from the Internal region of human GFER. AA range:51-100

Specificity ALR Polyclonal Antibody detects endogenous levels of ALR protein.

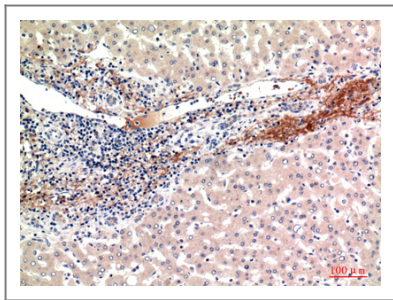
| Target Information

Gene name	GFER		
Protein Name	FAD-linked sulfhydryl oxidase ALR		
	Organism	Gene ID	UniProt ID
	Human	2671 ;	P55789 ;
	Mouse	11692 ;	P56213 ;
	Rat	27100 ;	Q63042 ;
Cellular Localization	[Isoform 1]: Mitochondrion intermembrane space. Mitochondrion .; [Isoform 2]: Cytoplasm. Secreted.		
Tissue specificity	Ubiquitously expressed. Highest expression in the testis and liver and low expression in the muscle.		
Function	Catalytic activity:4 R'C(R)SH + O(2) = 2 R'C(R)S-S(R)CR' + 2 H(2)O.,cofactor:FAD.,Function:FAD-dependent sulfhydryl oxidase that catalyzes disulfide bond formation.,similarity:Contains 1 ERV/ALR sulfhydryl oxidase domain.,subunit:Homodimer.,		

Validation Data



Western Blot analysis of HBE cells using ALR Polyclonal Antibody. Secondary antibody(catalog#:RS0002) was diluted at 1:20000



Immunohistochemical analysis of paraffin-embedded human liver, antibody was diluted at 1:100

Contact information

Orders: order@immunoway.com
Support: tech@immunoway.com
Telephone: 877-594-3616 (Toll Free), 408-747-0185
Website: <http://www.immunoway.com>
Address: 2200 Ringwood Ave San Jose, CA 95131 USA



Please scan the QR code to access additional product information:
ALR Rabbit pAb

For Research Use Only. Not for Use in Diagnostic Procedures.

[Antibody](#) | [ELISA Kits](#) | [Protein](#) | [Reagents](#)