

## G-CSFR Rabbit pAb

CatalogNo: YT5527

### Key Features

#### Host Species

- Rabbit

#### Reactivity

- Human, Mouse

#### Applications

- WB, ELISA

#### MW

- 92kD (Observed)

#### Isotype

- IgG

### Recommended Dilution Ratios

**WB 1:500-1:2000**

**ELISA 1:20000**

**Not yet tested in other applications.**

### Storage

#### Storage\*

-15°C to -25°C/1 year (Do not lower than -25°C)

#### Formulation

Liquid in PBS containing 50% glycerol, 0.5% BSA and 0.02% sodium azide.

### Basic Information

#### Clonality

Polyclonal

### Immunogen Information

#### Immunogen

The antiserum was produced against synthesized peptide derived from the Internal region of human CSF3R. AA range: 321-370

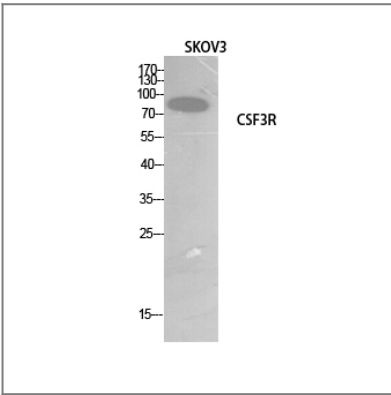
#### Specificity

G-CSFR Polyclonal Antibody detects endogenous levels of G-CSFR protein.

### Target Information

Gene name	CSF3R		
Protein Name	Granulocyte colony-stimulating factor receptor		
	Organism	Gene ID	UniProt ID
	Human	<a href="#">1441</a> ;	<a href="#">Q99062</a> ;
	Mouse		<a href="#">P40223</a> ;
Cellular Localization	[Isoform 2]: Secreted .; Cell membrane ; Single-pass type I membrane protein .		
Tissue specificity	One or several isoforms have been found in myelogenous leukemia cell line KG-1, leukemia U-937 cell line, in bone marrow cells, placenta, and peripheral blood granulocytes. Isoform GCSFR-2 is found only in leukemia U-937 cells. Isoform GCSFR-3 is highly expressed in placenta.		
Function	Alternative products:Additional isoforms seem to exist. Experimental confirmation may be lacking for some isoforms,Disease:Defects in CSF3R may be a cause of severe congenital neutropenia (SCN) in some patients.,Domain:The box 1 motif is required for JAK interaction and/or activation.,Domain:The WSXWS motif appears to be necessary for proper protein folding and thereby efficient intracellular transport and cell-surface receptor binding.,Function:Receptor for granulocyte colony-stimulating factor (CSF3). In addition it may function in some adhesion or recognition events at the cell surface.,similarity:Belongs to the type I cytokine receptor family. Type 2 subfamily.,similarity:Contains 1 Ig-like C2-type (immunoglobulin-like) domain.,similarity:Contains 5 fibronectin type-III domains.,subunit:Homodimer. The dimeric receptor binds two CSF3 molecules.,tissue specificity:One or several isoforms have been found in myelogenous leukemia cell line KG-1, leukemia U937 cell line, in bone marrow cells, placenta, and peripheral blood granulocytes. Isoform GCSFR-2 is found only in leukemia U937 cells. Isoform GSCFR-3 is highly expressed in placenta.,		

| Validation Data



Western Blot analysis of SKOV3 cells using G-CSFR Polyclonal Antibody. Secondary antibody(catalog#:RS0002) was diluted at 1:20000

| Contact information

Orders: order@immunoway.com  
Support: tech@immunoway.com  
Telephone: 877-594-3616 (Toll Free), 408-747-0185  
Website: http://www.immunoway.com  
Address: 2200 Ringwood Ave San Jose, CA 95131 USA



Please scan the QR code  
to access additional  
product information:  
**G-CSFR Rabbit pAb**

---

For Research Use Only. Not for Use in Diagnostic Procedures.

[Antibody](#) | [ELISA Kits](#) | [Protein](#) | [Reagents](#)