

## Flt3-L Rabbit pAb

CatalogNo: YT5516

### | Key Features

#### Host Species

- Rabbit

#### Reactivity

- Human, Mouse

#### Applications

- WB, ELISA

#### MW

- 26kD (Observed)

#### Isotype

- IgG

### | Recommended Dilution Ratios

**WB 1:500-1:2000**

**ELISA 1:20000**

**Not yet tested in other applications.**

### | Storage

#### Storage\*

-15°C to -25°C/1 year (Do not lower than -25°C)

#### Formulation

Liquid in PBS containing 50% glycerol, 0.5% BSA and 0.02% sodium azide.

### | Basic Information

#### Clonality

Polyclonal

### | Immunogen Information

#### Immunogen

The antiserum was produced against synthesized peptide derived from the C-terminal region of human FLT3LG. AA range: 171-220

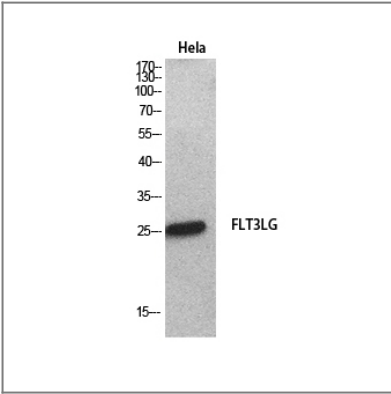
#### Specificity

Flt3-L Polyclonal Antibody detects endogenous levels of Flt3-L protein.

### | Target Information

<b>Gene name</b>	FLT3LG		
<b>Protein Name</b>	Fms-related tyrosine kinase 3 ligand		
	<b>Organism</b>	<b>Gene ID</b>	<b>UniProt ID</b>
	Human	<a href="#">2323</a> ;	<a href="#">P49771</a> ;
	Mouse		<a href="#">P49772</a> ;
<b>Cellular Localization</b>	[Isoform 1]: Cell membrane; Single-pass type I membrane protein.; [Isoform 2]: Secreted.		
<b>Tissue specificity</b>	Brain,Spleen,		
<b>Function</b>	Function:Stimulates the proliferation of early hematopoietic cells. Synergizes well with a number of other colony stimulating factors and interleukins.,subunit:Homodimer (isoform 2).,		

| Validation Data



Western Blot analysis of HeLa cells using Flt3-L Polyclonal Antibody. Secondary antibody(catalog#:RS0002) was diluted at 1:20000

| Contact information

Orders: order@immunoway.com  
Support: tech@immunoway.com  
Telephone: 877-594-3616 (Toll Free), 408-747-0185  
Website: http://www.immunoway.com  
Address: 2200 Ringwood Ave San Jose, CA 95131 USA



Please scan the QR code to access additional product information:  
**Flt3-L Rabbit pAb**