

NKp44 Rabbit pAb

CatalogNo: YT5481

Key Features

Host Species

- Rabbit

Reactivity

- Human

Applications

- WB,IHC,IF,ELISA

MW

- 44kD (Observed)

Isotype

- IgG

Recommended Dilution Ratios

WB 1:500-1:2000

IHC: 1:100-1:300

ELISA 1:20000

IF 1:50-200

Storage

Storage*

-15°C to -25°C/1 year(Do not lower than -25°C)

Formulation

Liquid in PBS containing 50% glycerol, 0.5% BSA and 0.02% sodium azide.

Basic Information

Clonality

Polyclonal

Immunogen Information

Immunogen

The antiserum was produced against synthesized peptide derived from the Internal region of human NCR2. AA range:61-110

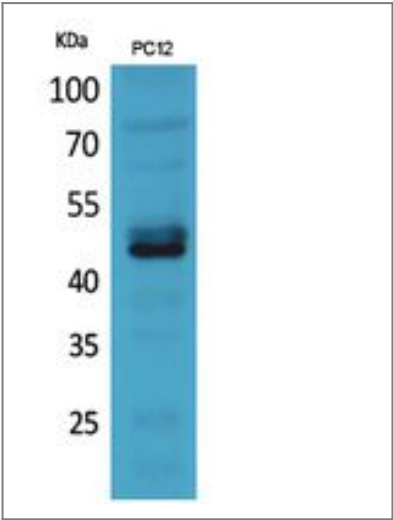
Specificity

NKp44 Polyclonal Antibody detects endogenous levels of NKp44 protein.

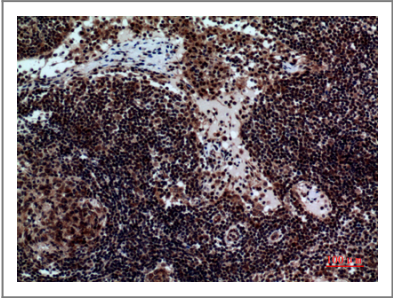
Target Information

Gene name	NCR2		
Protein Name	Natural cytotoxicity triggering receptor 2		
	Organism	Gene ID	UniProt ID
	Human	9436;	O95944;
Cellular Localization	Cell membrane ; Single-pass type I membrane protein .		
Tissue specificity	Selectively expressed by activated NK cells and by in vitro cultured (i.e. activated) TCRg/d lymphoid cells.		
Function	Function:Cytotoxicity-activating receptor that may contribute to the increased efficiency of activated natural killer (NK) cells to mediate tumor cell lysis.,similarity:Belongs to the natural cytotoxicity receptor (NCR) family.,similarity:Contains 1 Ig-like (immunoglobulin-like) domain.,subunit:Interacts with TYROBP/DAP12.,tissue specificity:Selectively expressed by activated NK cells and by in vitro cultured (i.e. activated) TCRg/d lymphoid cells.,		

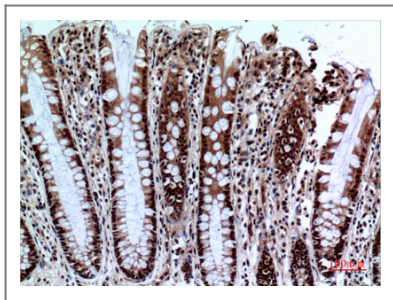
| Validation Data



Western Blot analysis of PC-12 cells using NKp44 Polyclonal Antibody. Secondary antibody(catalog#:RS0002) was diluted at 1:20000



Immunohistochemical analysis of paraffin-embedded human-Lymph-nodes, antibody was diluted at 1:100



Immunohistochemical analysis of paraffin-embedded human-colon, antibody was diluted at 1:100

Contact information

Orders: order@immunoway.com
Support: tech@immunoway.com
Telephone: 877-594-3616 (Toll Free), 408-747-0185
Website: <http://www.immunoway.com>
Address: 2200 Ringwood Ave San Jose, CA 95131 USA



Please scan the QR code to access additional product information:
NKp44 Rabbit pAb

For Research Use Only. Not for Use in Diagnostic Procedures.

[Antibody](#) | [ELISA Kits](#) | [Protein](#) | [Reagents](#)