

## CD223 Rabbit pAb

CatalogNo: YT5480

### Key Features

#### Host Species

- Rabbit

#### Reactivity

- Human,Rat,Mouse,

#### Applications

- WB,ELISA

#### MW

- 57kD (Observed)

#### Isotype

- IgG

### Recommended Dilution Ratios

**WB 1:500-1:2000**

**ELISA 1:20000**

**Not yet tested in other applications.**

### Storage

#### Storage\*

-15°C to -25°C/1 year(Do not lower than -25°C)

#### Formulation

Liquid in PBS containing 50% glycerol, 0.5% BSA and 0.02% sodium azide.

### Basic Information

#### Clonality

Polyclonal

### Immunogen Information

#### Immunogen

The antiserum was produced against synthesized peptide derived from the Internal region of human LAG3. AA range:91-140

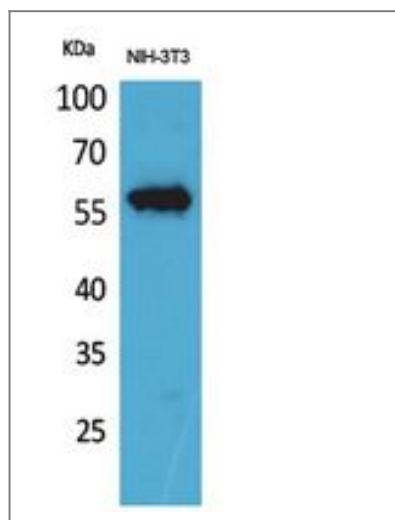
#### Specificity

CD223 Polyclonal Antibody detects endogenous levels of CD223 protein.

### Target Information

<b>Gene name</b>	LAG3		
<b>Protein Name</b>	Lymphocyte activation gene 3 protein		
	<b>Organism</b>	<b>Gene ID</b>	<b>UniProt ID</b>
	Human	<a href="#">3902;</a>	<a href="#">P18627;</a>
	Mouse	<a href="#">16768;</a>	<a href="#">Q61790;</a>
	Rat	<a href="#">297596;</a>	<a href="#">Q5BK54;</a>
<b>Cellular Localization</b>	[Lymphocyte activation gene 3 protein]: Cell membrane ; Single-pass type I membrane protein . ; [Secreted lymphocyte activation gene 3 protein]: Secreted . Produced following cleavage of the main chain. .		
<b>Tissue specificity</b>	Primarily expressed in activated T-cells and a subset of natural killer (NK) cells.		
<b>Function</b>	Function:Involved in lymphocyte activation. Binds to HLA class-II antigens.,similarity:Contains 1 Ig-like V-type (immunoglobulin-like) domain.,similarity:Contains 3 Ig-like C2-type (immunoglobulin-like) domains.,tissue specificity:On cell surface of activated NK and T-lymphocytes.,		

## Validation Data



Western Blot analysis of NIH-3T3 cells using CD223 Polyclonal Antibody. Secondary antibody(catalog#:RS0002) was diluted at 1:20000

## Contact information

Orders: [order@immunoway.com](mailto:order@immunoway.com)  
 Support: [tech@immunoway.com](mailto:tech@immunoway.com)  
 Telephone: 877-594-3616 (Toll Free), 408-747-0185  
 Website: <http://www.immunoway.com>  
 Address: 2200 Ringwood Ave San Jose, CA 95131 USA



Please scan the QR code to access additional product information:  
**CD223 Rabbit pAb**

