

CD239 Rabbit pAb

CatalogNo: YT5477

Key Features

Host Species

- Rabbit

Reactivity

- Human, Mouse, Rat

Applications

- WB, ELISA

MW

- 78kD (Observed)

Isotype

- IgG

Recommended Dilution Ratios

WB 1:500-1:2000

ELISA 1:20000

Not yet tested in other applications.

Storage

Storage* -15°C to -25°C/1 year (Do not lower than -25°C)

Formulation Liquid in PBS containing 50% glycerol, 0.5% BSA and 0.02% sodium azide.

Basic Information

Clonality Polyclonal

Immunogen Information

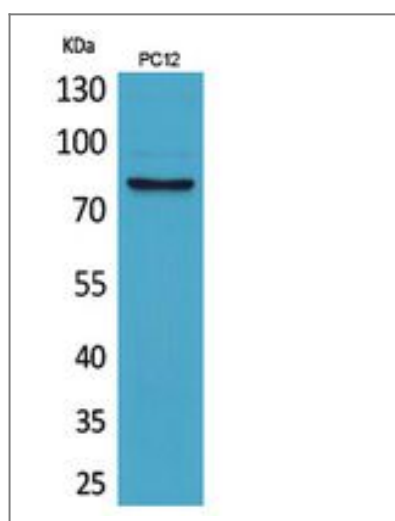
Immunogen The antiserum was produced against synthesized peptide derived from the Internal region of human BCAM. AA range: 191-240

Specificity CD239 Polyclonal Antibody detects endogenous levels of CD239 protein.

Target Information

Gene name	BCAM		
Protein Name	Basal cell adhesion molecule		
	Organism	Gene ID	UniProt ID
	Human	4059;	P50895;
	Mouse	57278;	Q9R069;
	Rat	78958;	Q9ESS6;
Cellular Localization	Membrane; Single-pass type I membrane protein.		
Tissue specificity	Wide tissue distribution (highest in the pancreas and very low in brain). Closely associated with the basal layer of cells in epithelia and the endothelium of blood vessel walls.		
Function	cell adhesion, cell-matrix adhesion, biological adhesion, cell-substrate adhesion,		

Validation Data



Western Blot analysis of PC12 cells using CD239 Polyclonal Antibody. Secondary antibody(catalog#:RS0002) was diluted at 1:20000

Contact information

Orders: order@immunoway.com
 Support: tech@immunoway.com
 Telephone: 877-594-3616 (Toll Free), 408-747-0185
 Website: <http://www.immunoway.com>
 Address: 2200 Ringwood Ave San Jose, CA 95131 USA



Please scan the QR code to access additional product information:
CD239 Rabbit pAb

