

## LIR-7 Rabbit pAb

CatalogNo: YT5466

### Key Features

#### Host Species

- Rabbit

#### Reactivity

- Human

#### Applications

- WB,IHC,IF,ELISA

#### MW

- 53kD (Observed)

#### Isotype

- IgG

### Recommended Dilution Ratios

**WB 1:500-1:2000**

**IHC: 1:100-1:300**

**ELISA 1:20000**

**IF 1:50-200**

### Storage

#### Storage\*

-15°C to -25°C/1 year(Do not lower than -25°C)

#### Formulation

Liquid in PBS containing 50% glycerol, 0.5% BSA and 0.02% sodium azide.

### Basic Information

#### Clonality

Polyclonal

### Immunogen Information

#### Immunogen

The antiserum was produced against synthesized peptide derived from the Internal region of human LILRA2. AA range:121-170

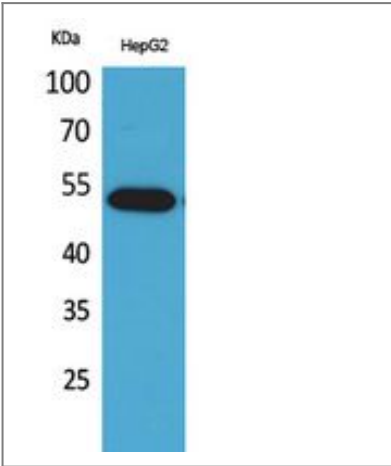
#### Specificity

LIR-7 Polyclonal Antibody detects endogenous levels of LIR-7 protein.

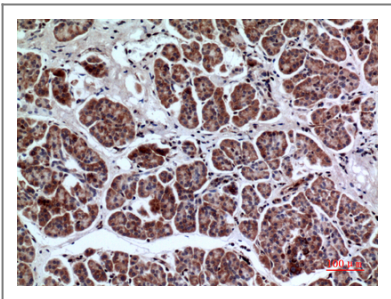
### Target Information

Gene name	LILRA2		
Protein Name	Leukocyte immunoglobulin-like receptor subfamily A member 2		
	Organism	Gene ID	UniProt ID
	Human	<a href="#">11027</a> ;	<a href="#">Q8N149</a> ;
Cellular Localization	Cell membrane ; Single-pass type I membrane protein .; [Isoform 4]: Secreted .		
Tissue specificity	Detected on the surface of all peripheral blood monocytes, neutrophils, basophils and eosinophils (at protein level) (PubMed:12529506, PubMed:22479404). Expression levels are very low or not detectable on monocytes, T-cells, B-cells, dendritic cells and natural killer (NK) cells (PubMed:9548455).		
Function	Function:May act as receptor for class I MHC antigens.,similarity:Contains 4 Ig-like C2-type (immunoglobulin-like) domains.,tissue specificity:Expression levels are very low or not detectable on monocytes, T-cells, B-cells, dendritic cells and natural killer (NK) cells.,		

Validation Data



Western Blot analysis of HepG2 cells using LIR-7 Polyclonal Antibody. Secondary antibody(catalog#:RS0002) was diluted at 1:20000



Immunohistochemical analysis of paraffin-embedded human-pancreas, antibody was diluted at 1:100

Contact information

Orders: order@immunoway.com  
Support: tech@immunoway.com  
Telephone: 877-594-3616 (Toll Free), 408-747-0185  
Website: http://www.immunoway.com  
Address: 2200 Ringwood Ave San Jose, CA 95131 USA



Please scan the QR code  
to access additional  
product information:  
**LIR-7 Rabbit pAb**

---

For Research Use Only. Not for Use in Diagnostic Procedures.

[Antibody](#) | [ELISA Kits](#) | [Protein](#) | [Reagents](#)