

## CD85f Rabbit pAb

CatalogNo: YT5465

### Key Features

#### Host Species

- Rabbit

#### Reactivity

- Human

#### Applications

- WB,ELISA

#### MW

- 33kD (Observed)

#### Isotype

- IgG

### Recommended Dilution Ratios

**WB 1:500-1:2000**

**ELISA 1:20000**

**Not yet tested in other applications.**

### Storage

**Storage\*** -15°C to -25°C/1 year(Do not lower than -25°C)

**Formulation** Liquid in PBS containing 50% glycerol, 0.5% BSA and 0.02% sodium azide.

### Basic Information

**Clonality** Polyclonal

### Immunogen Information

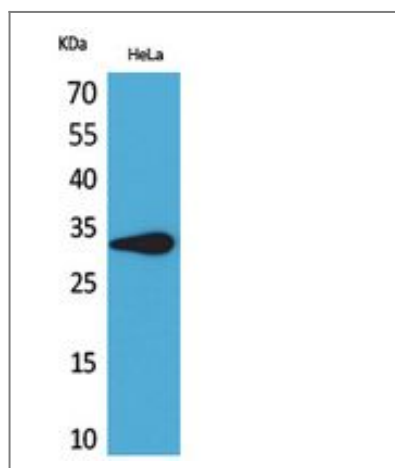
**Immunogen** The antiserum was produced against synthesized peptide derived from the Internal region of human LILRA5. AA range:141-190

**Specificity** CD85f Polyclonal Antibody detects endogenous levels of CD85f protein.

### Target Information

<b>Gene name</b>	LILRA5		
<b>Protein Name</b>	Leukocyte immunoglobulin-like receptor subfamily A member 5		
	<b>Organism</b>	<b>Gene ID</b>	<b>UniProt ID</b>
	Human	<a href="#">353514</a> ;	<a href="#">A6NI73</a> ;
<b>Cellular Localization</b>	Cell membrane ; Single-pass type I membrane protein .; [Isoform 3]: Secreted .		
<b>Tissue specificity</b>	Expressed mostly in tissues of the hematopoietic system, including bone marrow, spleen, lymph node and peripheral leukocytes. Among leukocytes, monocytes and neutrophils express the highest level. Expressed in CD14+ monocytes, but not in T-cells, B-cells or natural killer (NK) cells (at protein level).		
<b>Function</b>	Function:May plays a role in triggering innate immune responses. Seems not play a role for any class I MHC antigens recognition.,similarity:Contains 2 Ig-like C2-type (immunoglobulin-like) domains.,tissue specificity:Expressed mostly in tissues of the hematopoietic system, including bone marrow, spleen, lymph node and peripheral leukocytes. Among leukocytes, monocytes and neutrophils express the highest level. Expressed in CD14+ monocytes, but not in T-cells, B-cells or natural killer (NK) cells (at protein level).,		

## Validation Data



Western Blot analysis of HeLa cells using CD85f Polyclonal Antibody. Secondary antibody(catalog#:RS0002) was diluted at 1:20000

## Contact information

Orders: [order@immunoway.com](mailto:order@immunoway.com)  
 Support: [tech@immunoway.com](mailto:tech@immunoway.com)  
 Telephone: 877-594-3616 (Toll Free), 408-747-0185  
 Website: <http://www.immunoway.com>  
 Address: 2200 Ringwood Ave San Jose, CA 95131 USA



Please scan the QR code  
 to access additional  
 product information:  
**CD85f Rabbit pAb**

