

## Integrin $\alpha$ D Rabbit pAb

CatalogNo: YT5460

### Key Features

#### Host Species

- Rabbit

#### Reactivity

- Human,Rat,Mouse,

#### Applications

- WB,IHC,IF,ELISA

#### MW

- 127kD (Observed)

#### Isotype

- IgG

### Recommended Dilution Ratios

**WB 1:500-1:2000**

**IHC: 1:100-1:300**

**ELISA 1:20000**

**IF 1:50-200**

### Storage

#### Storage\*

-15°C to -25°C/1 year(Do not lower than -25°C)

#### Formulation

Liquid in PBS containing 50% glycerol, 0.5% BSA and 0.02% sodium azide.

### Basic Information

#### Clonality

Polyclonal

### Immunogen Information

#### Immunogen

The antiserum was produced against synthesized peptide derived from the Internal region of human ITGAD. AA range:901-950

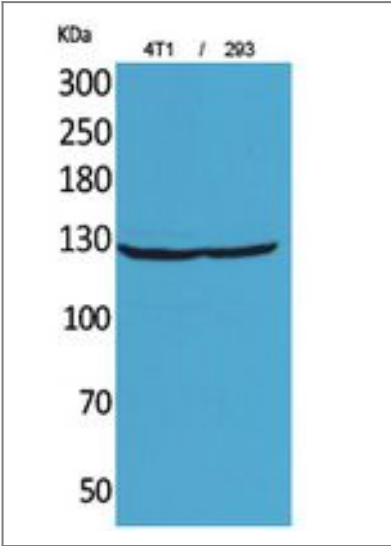
#### Specificity

Integrin  $\alpha$ D Polyclonal Antibody detects endogenous levels of Integrin  $\alpha$ D protein.

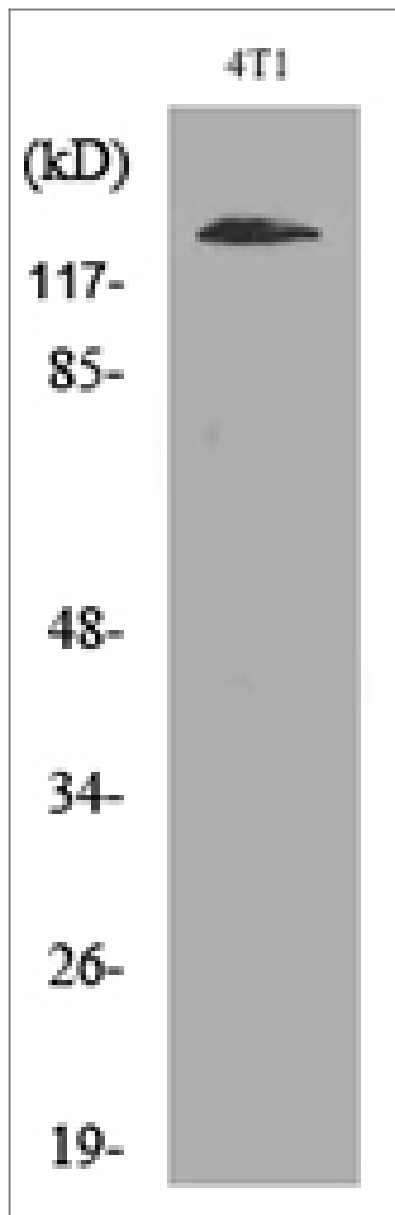
### Target Information

Gene name	ITGAD		
Protein Name	Integrin alpha-D		
	Organism	Gene ID	UniProt ID
	Human	<a href="#">3681</a> ;	<a href="#">Q13349</a> ;
	Mouse		<a href="#">Q3V0T4</a> ;
Cellular Localization	Membrane; Single-pass type I membrane protein.		
Tissue specificity	Expressed moderately on myelomonocytic cell lines and subsets of peripheral blood leukocytes and strongly on tissue-specialized cells, including macrophages foam cells within atherosclerotic plaques, and on splenic red pulp macrophages.		
Function	Domain:The integrin I-domain (insert) is a VWFA domain. Integrins with I-domains do not undergo protease cleavage.,Function:Integrin alpha-D/beta-2 is a receptor for ICAM3 and VCAM1. May play a role in the atherosclerotic process such as clearing lipoproteins from plaques and in phagocytosis of blood-borne pathogens, particulate matter, and senescent erythrocytes from the blood.,similarity:Belongs to the integrin alpha chain family.,similarity:Contains 1 VWFA domain.,similarity:Contains 7 FG-GAP repeats.,subunit:Heterodimer of an alpha and a beta subunit. Alpha-D associates with beta-2.,tissue specificity:Expressed moderately on myelomonocytic cell lines and subsets of peripheral blood leukocytes and strongly on tissue-specialized cells, including macrophages foam cells within atherosclerotic plaques, and on splenic red pulp macrophages.,		

Validation Data



Western Blot analysis of 4T1, 293 cells using Integrin αD Polyclonal Antibody. Secondary antibody(catalog#:RS0002) was diluted at 1:20000



Western blot analysis of lysate from 4T1 cells, using ITGAD Antibody.

## Contact information

Orders: [order@immunoway.com](mailto:order@immunoway.com)  
Support: [tech@immunoway.com](mailto:tech@immunoway.com)  
Telephone: 877-594-3616 (Toll Free), 408-747-0185  
Website: <http://www.immunoway.com>  
Address: 2200 Ringwood Ave San Jose, CA 95131 USA



Please scan the QR code to access additional product information:  
**Integrin  $\alpha$ D Rabbit pAb**