

## EP1 Rabbit pAb

CatalogNo: YT5447

### Key Features

#### Host Species

- Rabbit

#### Reactivity

- Human, Mouse, Rat

#### Applications

- WB, ELISA

#### MW

- 44kD (Observed)

#### Isotype

- IgG

### Storage

**Storage\*** -15°C to -25°C/1 year (Do not lower than -25°C)

**Formulation** Liquid in PBS containing 50% glycerol, 0.5% BSA and 0.02% sodium azide.

### Recommended Dilution Ratios

**WB 1:500-1:2000**

**ELISA 1:20000**

**Not yet tested in other applications.**

### Basic Information

**Clonality** Polyclonal

### Immunogen Information

**Immunogen** The antiserum was produced against synthesized peptide derived from the Internal region of human PTGER1. AA range:191-240

**Specificity** EP1 Polyclonal Antibody detects endogenous levels of EP1 protein.

### Target Information

**Gene name** PTGER1

**Protein Name** Prostaglandin E2 receptor EP1 subtype

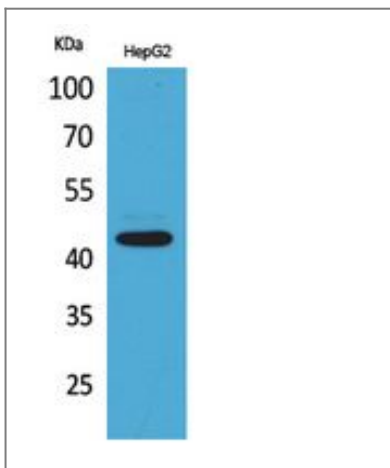
Organism	Gene ID	UniProt ID
Human	<a href="#">5731</a> ;	<a href="#">P34995</a> ;
Mouse		<a href="#">P35375</a> ;

**Cellular Localization** Cell membrane; Multi-pass membrane protein.

**Tissue specificity** Abundant in kidney. Lower level expression in lung, skeletal muscle and spleen, lowest expression in testis and not detected in liver brain and heart.

**Function** Function:Receptor for prostaglandin E2 (PGE2). The activity of this receptor is mediated by G(q) proteins which activate a phosphatidylinositol-calcium second messenger system. May play a role as an important modulator of renal function. Implicated the smooth muscle contractile response to PGE2 in various tissues.,PTM:Phosphorylated .,similarity:Belongs to the G-protein coupled receptor 1 family.,tissue specificity:Abundant in kidney. Lower level expression in lung, skeletal muscle and spleen, lowest expression in testis and not detected in liver brain and heart.,

## Validation Data



Western Blot analysis of HepG2 cells using EP1 Polyclonal Antibody. Secondary antibody(catalog#:RS0002) was diluted at 1:20000

## Contact information

Orders: [order@immunoway.com](mailto:order@immunoway.com)  
Support: [tech@immunoway.com](mailto:tech@immunoway.com)  
Telephone: 877-594-3616 (Toll Free), 408-747-0185  
Website: <http://www.immunoway.com>  
Address: 2200 Ringwood Ave San Jose, CA 95131 USA



Please scan the QR code to access additional product information:  
**EP1 Rabbit pAb**

