

FGF-16 Rabbit pAb

CatalogNo: YT5441

Key Features

Host Species

- Rabbit

Reactivity

- Human, Mouse, Rat

Applications

- WB, IHC, IF, ELISA

MW

- 24kD (Observed)

Isotype

- IgG

Recommended Dilution Ratios

WB 1:500-1:2000

IHC: 1:100-1:300

ELISA 1:20000

IF 1:50-200

Storage

Storage* -15°C to -25°C/1 year (Do not lower than -25°C)

Formulation Liquid in PBS containing 50% glycerol, 0.5% BSA and 0.02% sodium azide.

Basic Information

Clonality Polyclonal

Immunogen Information

Immunogen The antiserum was produced against synthesized peptide derived from the Internal region of human FGF16. AA range:141-190

Specificity FGF-16 Polyclonal Antibody detects endogenous levels of FGF-16 protein.

Target Information

Gene name FGF16

Protein Name Fibroblast growth factor 16

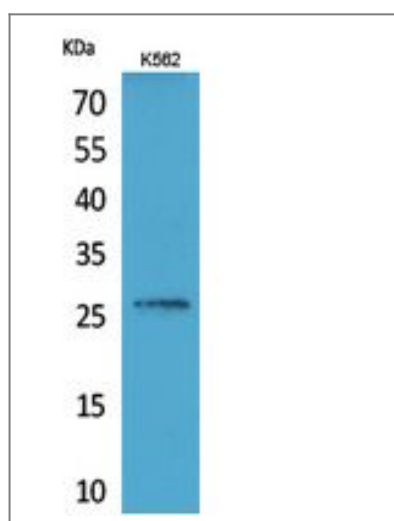
Organism	Gene ID	UniProt ID
Human	8823;	O43320;
Mouse	80903;	Q9ESL8;
Rat	60464;	O54769;

Cellular Localization Secreted .

Tissue specificity Heart,

Function Function:Induces hepatocellular proliferation. Has no biological effect on the heart.,similarity:Belongs to the heparin-binding growth factors family.,

Validation Data



Western Blot analysis of K562 cells using FGF-16 Polyclonal Antibody. Secondary antibody(catalog#:RS0002) was diluted at 1:20000

Contact information

Orders: order@immunoway.com
Support: tech@immunoway.com
Telephone: 877-594-3616 (Toll Free), 408-747-0185
Website: <http://www.immunoway.com>
Address: 2200 Ringwood Ave San Jose, CA 95131 USA



Please scan the QR code to access additional product information:
FGF-16 Rabbit pAb

