

MYH-pan Rabbit pAb

CatalogNo: YT5427

| Key Features

Host Species

- Rabbit

Reactivity

- Human, Mouse, Rat

Applications

- WB, IHC, IF, ELISA

MW

- 225kD (Observed)

Isotype

- IgG

| Recommended Dilution Ratios

WB 1:500-1:2000

IHC: 1:100-1:300

ELISA 1:20000

IF 1:50-200

| Storage

Storage*

-15°C to -25°C/1 year (Do not lower than -25°C)

Formulation

Liquid in PBS containing 50% glycerol, 0.5% BSA and 0.02% sodium azide.

| Basic Information

Clonality

Polyclonal

| Immunogen Information

Immunogen

The antiserum was produced against synthesized peptide derived from human MYH-pan around the non-acetylation site of Lys1394. AA range:1351-1400

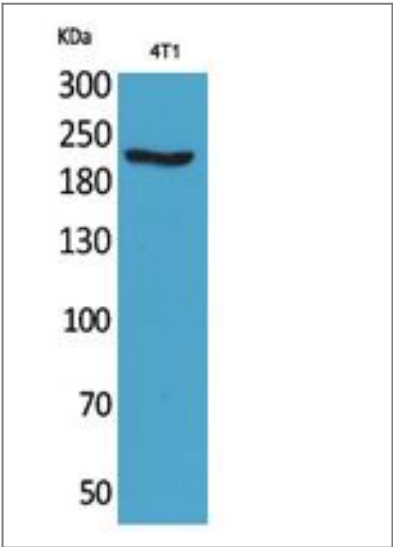
Specificity

MYH-pan Polyclonal Antibody detects endogenous levels of MYH-pan protein only when acetylation at K1394.

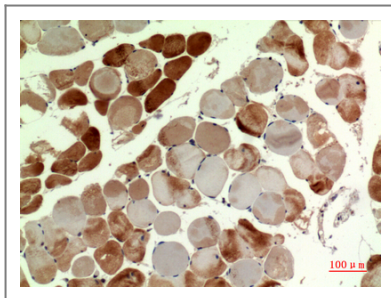
Target Information

Gene name	MYH1/MYH2/MYH3/PTPRJ/MYH6/MYH7/MYH8		
Protein Name	Myosin-1/Myosin-2/Myosin-3/Receptor-type tyrosine-protein phosphatase eta/Myosin-6/Myosin-7/Myosin-8		
Organism	Gene ID	UniProt ID	
Human	4619 ; 4620 ; 4621 ; 5795 ; 4624 ; 4625 ; 4626 ;	P12882 ; Q9UKX2 ; P11055 ; Q9Y623 ; P13533 ; P12883 ; P13535 ;	
Mouse	17879 ; 17883 ; 17884 ;		
Rat	24583 ; 360543 ;	P12847 ; Q29RW1 ;	
Cellular Localization	Cytoplasm, myofibril. Thick filaments of the myofibrils.		
Tissue specificity	Skeletal muscle,		
Function	Domain:The rodlike tail sequence is highly repetitive, showing cycles of a 28-residue repeat pattern composed of 4 heptapeptides, characteristic for alpha-helical coiled coils.,Function:Muscle contraction.,miscellaneous:Each myosin heavy chain can be split into 1 light meromyosin (LMM) and 1 heavy meromyosin (HMM). It can later be split further into 2 globular subfragments (S1) and 1 rod-shaped subfragment (S2).,similarity:Contains 1 IQ domain.,similarity:Contains 1 myosin head-like domain.,subcellular location:Thick filaments of the myofibrils.,subunit:Muscle myosin is a hexameric protein that consists of 2 heavy chain subunits (MHC), 2 alkali light chain subunits (MLC) and 2 regulatory light chain subunits (MLC-2).,		

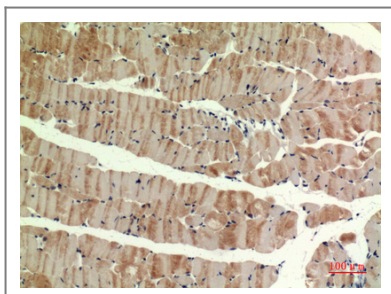
Validation Data



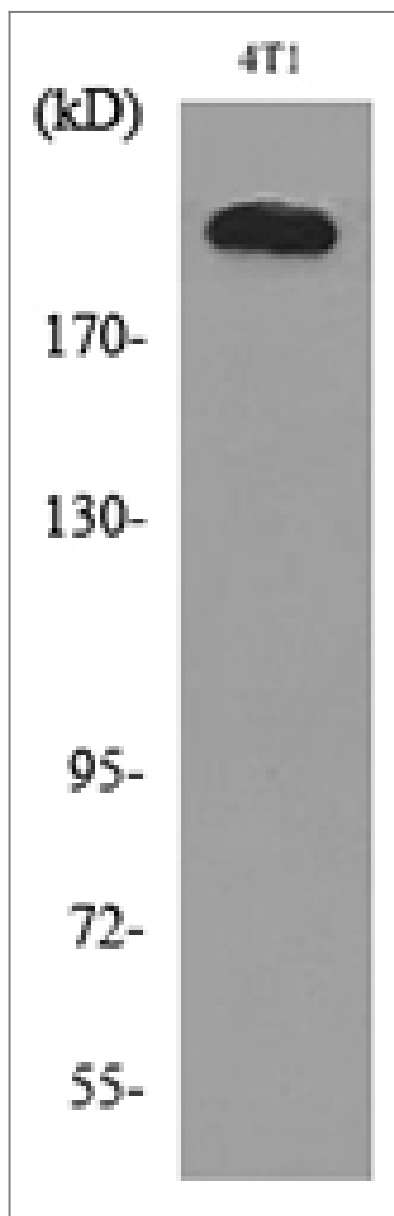
Western Blot analysis of 4T1 cells using MYH-pan Polyclonal Antibody. Secondary antibody(catalog#:RS0002) was diluted at 1:20000



Immunohistochemical analysis of paraffin-embedded human-muscle, antibody was diluted at 1:100



Immunohistochemical analysis of paraffin-embedded mouse-muscle, antibody was diluted at 1:100



Western blot analysis of lysate from 4T1 cells, using MYH-pan Antibody.

| Contact information

Orders: order@immunoway.com
Support: tech@immunoway.com
Telephone: 877-594-3616 (Toll Free), 408-747-0185
Website: <http://www.immunoway.com>
Address: 2200 Ringwood Ave San Jose, CA 95131 USA



Please scan the QR code
to access additional
product information:
**MYH-pan Rabbit
pAb**

For Research Use Only. Not for Use in Diagnostic Procedures.

[Antibody](#) | [ELISA Kits](#) | [Protein](#) | [Reagents](#)