

## Inhibin $\beta$ -A Rabbit pAb

CatalogNo: YT5409

### Key Features

#### Host Species

- Rabbit

#### Reactivity

- Human, Mouse, Rat

#### Applications

- WB, IHC, IF, ELISA

#### MW

- 52kD (Observed)

#### Isotype

- IgG

### Recommended Dilution Ratios

**WB 1:500-1:2000**

**IHC: 1:100-1:300**

**ELISA 1:20000**

**IF 1:50-200**

### Storage

#### Storage\*

-15°C to -25°C/1 year (Do not lower than -25°C)

#### Formulation

Liquid in PBS containing 50% glycerol, 0.5% BSA and 0.02% sodium azide.

### Basic Information

#### Clonality

Polyclonal

### Immunogen Information

#### Immunogen

The antiserum was produced against synthesized peptide derived from the C-terminal region of human INHBA. AA range: 377-426

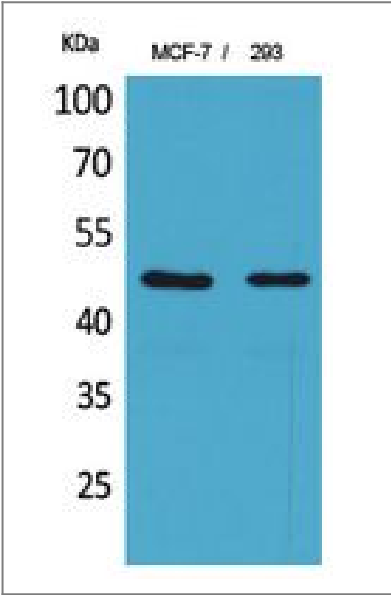
#### Specificity

Inhibin  $\beta$ -A Polyclonal Antibody detects endogenous levels of Inhibin  $\beta$ -A protein.

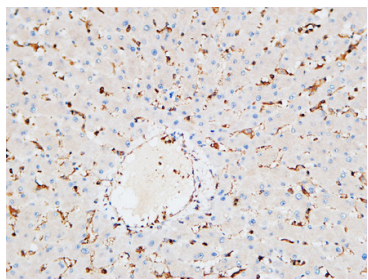
### Target Information

Gene name	INHBA		
Protein Name	Inhibin beta A chain		
	Organism	Gene ID	UniProt ID
	Human	<a href="#">3624</a> ;	<a href="#">P08476</a> ;
	Mouse	<a href="#">16323</a> ;	<a href="#">Q04998</a> ;
	Rat	<a href="#">29200</a> ;	<a href="#">P18331</a> ;
Cellular Localization	Secreted.		
Tissue specificity	Dermoid cancer, Eye, Fetal brain, Testis,		
Function	Function: Inhibins and activins inhibit and activate, respectively, the secretion of follitropin by the pituitary gland. Inhibins/activins are involved in regulating a number of diverse functions such as hypothalamic and pituitary hormone secretion, gonadal hormone secretion, germ cell development and maturation, erythroid differentiation, insulin secretion, nerve cell survival, embryonic axial development or bone growth, depending on their subunit composition. Inhibins appear to oppose the functions of activins.,online information: Activin entry, similarity: Belongs to the TGF-beta family., subunit: Dimeric, linked by one or more disulfide bonds. Inhibin A is a dimer of alpha and beta-A. Inhibin B is a dimer of alpha and beta-B. Activin A is a homodimer of beta-A. Activin B is a homodimer of beta-B. Activin AB is a dimer of beta-A and beta-B.,		

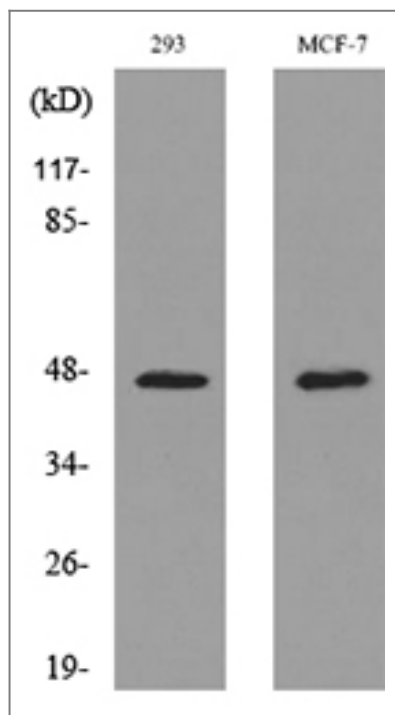
Validation Data



Western Blot analysis of MCF-7, 293 cells using Inhibin  $\beta$ -A Polyclonal Antibody. Secondary antibody(catalog#:RS0002) was diluted at 1:20000



Immunohistochemical analysis of paraffin-embedded Human liver. 1, Antibody was diluted at 1:200(4° overnight). 2, High-pressure and temperature EDTA, pH8.0 was used for antigen retrieval. 3,Secondary antibody was diluted at 1:200(room temperature, 30min).



Western blot analysis of lysate from 293, MCF-7 cells, using INHBA Antibody.

## Contact information

Orders: [order@immunoway.com](mailto:order@immunoway.com)  
 Support: [tech@immunoway.com](mailto:tech@immunoway.com)  
 Telephone: 877-594-3616 (Toll Free), 408-747-0185  
 Website: <http://www.immunoway.com>  
 Address: 2200 Ringwood Ave San Jose, CA 95131 USA



Please scan the QR code to access additional product information:

**Inhibin  $\beta$ -A Rabbit pAb**

For Research Use Only. Not for Use in Diagnostic Procedures.

[Antibody](#) | [ELISA Kits](#) | [Protein](#) | [Reagents](#)