

CGREF1 Rabbit pAb

CatalogNo: YT5376

Key Features

Host Species

- Rabbit

Reactivity

- Human, Mouse, Rat

Applications

- WB, IHC, IF, ELISA

MW

- 32kD (Observed)

Isotype

- IgG

Recommended Dilution Ratios

WB 1:500-1:2000

IHC: 1:100-1:300

ELISA 1:20000

IF 1:50-200

Storage

Storage*

-15°C to -25°C/1 year (Do not lower than -25°C)

Formulation

Liquid in PBS containing 50% glycerol, 0.5% BSA and 0.02% sodium azide.

Basic Information

Clonality

Polyclonal

Immunogen Information

Immunogen

The antiserum was produced against synthesized peptide derived from the N-terminal region of human CGREF1. AA range:1-50

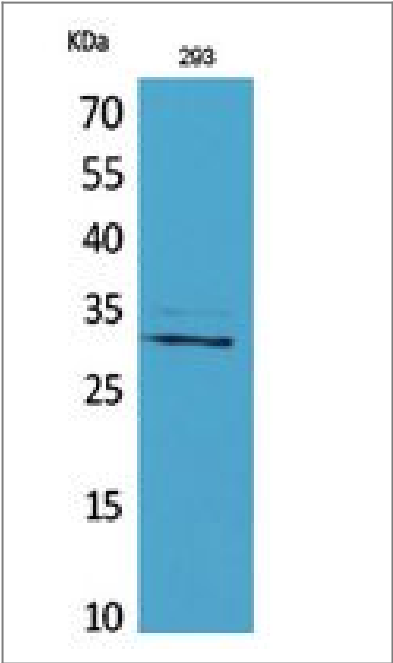
Specificity

CGREF1 Polyclonal Antibody detects endogenous levels of CGREF1 protein.

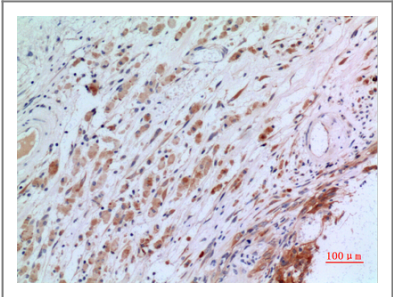
Target Information

Gene name	CGREF1		
Protein Name	Cell growth regulator with EF hand domain protein 1		
	Organism	Gene ID	UniProt ID
	Human	10669;	Q99674;
	Mouse		Q8R1U2;
Cellular Localization	Secreted .		
Tissue specificity	Brain,Fetal brain,Testis,Thalamus,		
Function	Caution:The sequence shown here is derived from an Ensembl automatic analysis pipeline and should be considered as preliminary data.,Function:Able to inhibit growth in several cell lines.,induction:By p53.,similarity:Contains 2 EF-hand domains.,		

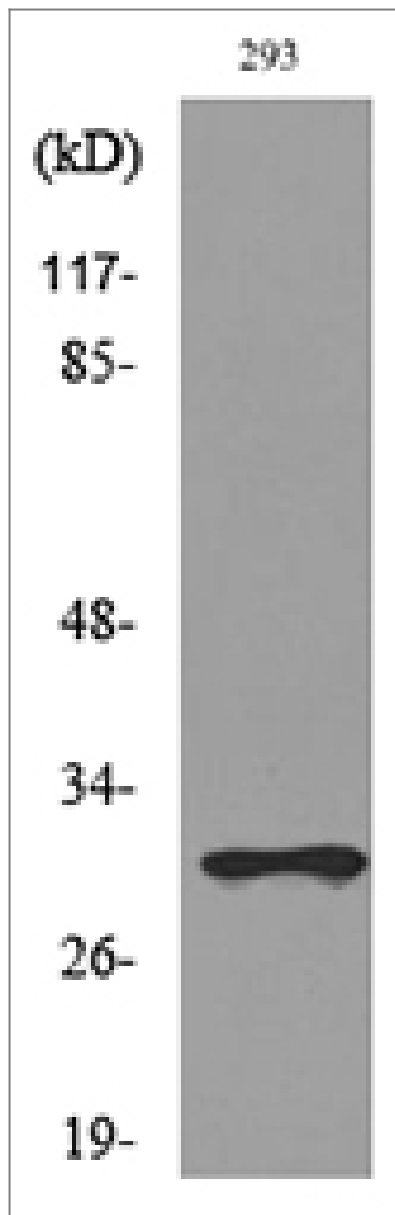
| Validation Data



Western Blot analysis of 293 cells using CGREF1 Polyclonal Antibody. Secondary antibody(catalog#:RS0002) was diluted at 1:20000



Immunohistochemical analysis of paraffin-embedded human-brain, antibody was diluted at 1:100



Western blot analysis of lysate from 293 cells, using CGREF1 Antibody.

Contact information

Orders: order@immunoway.com
Support: tech@immunoway.com
Telephone: 877-594-3616 (Toll Free), 408-747-0185
Website: <http://www.immunoway.com>
Address: 2200 Ringwood Ave San Jose, CA 95131 USA



Please scan the QR code
to access additional
product information:
CGREF1 Rabbit pAb