

MCM7 Rabbit pAb

CatalogNo: YT5371

Orthogonal Validated 

Key Features

Host Species

- Rabbit

Reactivity

- Human, Mouse, Rat

Applications

- WB, IHC, IF, ELISA

MW

- 81kD (Observed)

Isotype

- IgG

Recommended Dilution Ratios

WB 1:500-1:2000**IHC: 1:100-1:300****ELISA 1:20000****IF 1:50-200**

Storage

Storage*

-15°C to -25°C/1 year (Do not lower than -25°C)

Formulation

Liquid in PBS containing 50% glycerol, 0.5% BSA and 0.02% sodium azide.

Basic Information

Clonality

Polyclonal

Immunogen Information

Immunogen

The antiserum was produced against synthesized peptide derived from the Internal region of human MCM7. AA range: 491-540

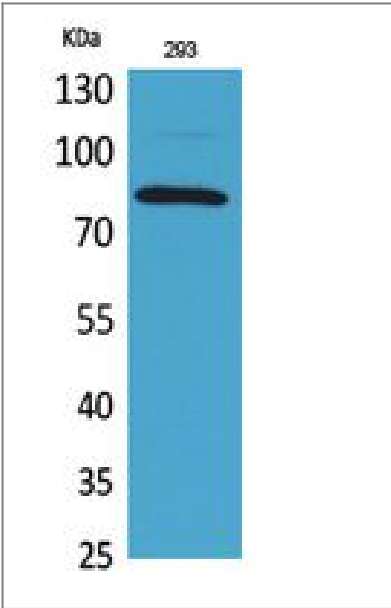
Specificity

MCM7 Polyclonal Antibody detects endogenous levels of MCM7 protein.

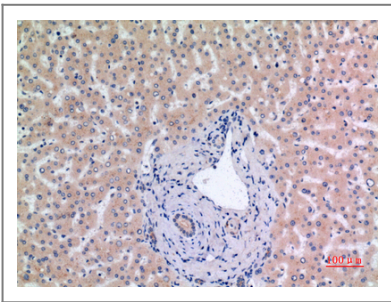
Target Information

Gene name	MCM7		
Protein Name	DNA replication licensing factor MCM7		
	Organism	Gene ID	UniProt ID
	Human	4176 ;	P33993 ;
	Mouse	17220 ;	Q61881 ;
Cellular Localization	Nucleus . Chromosome . Associated with chromatin before the formation of nuclei and detaches from it as DNA replication progresses. .		
Tissue specificity	Brain,Cervix,Chronic myeloid leukemia cell,Lung,		
Function	Function:Acts as a factor that allows the DNA to undergo a single round of replication per cell cycle. Required for DNA replication and cell proliferation. Required for S-phase checkpoint activation upon UV-induced damage.,PTM:Phosphorylated upon DNA damage, probably by ATM or ATR.,similarity:Belongs to the MCM family.,similarity:Contains 1 MCM domain.,subunit:Interacts with the ATR-ATRIP complex and with RAD17. Interacts with TIPIN.,		

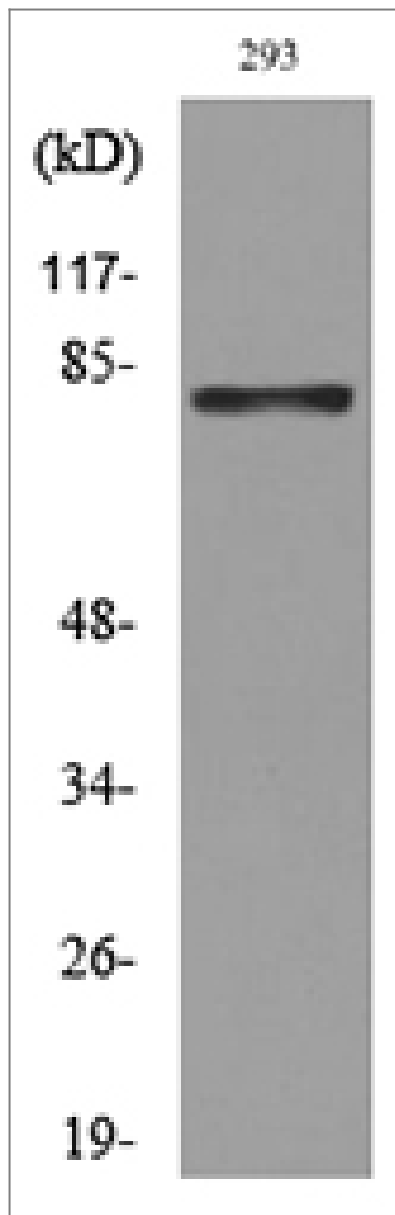
| Validation Data



Western Blot analysis of 293 cells using MCM7 Polyclonal Antibody. Secondary antibody(catalog#:RS0002) was diluted at 1:20000



Immunohistochemical analysis of paraffin-embedded human-liver, antibody was diluted at 1:100



Western blot analysis of lysate from 293 cells, using MCM7 Antibody.

Contact information

Orders: order@immunoway.com
Support: tech@immunoway.com
Telephone: 877-594-3616 (Toll Free), 408-747-0185
Website: <http://www.immunoway.com>
Address: 2200 Ringwood Ave San Jose, CA 95131 USA



Please scan the QR code
to access additional
product information:
MCM7 Rabbit pAb

For Research Use Only. Not for Use in Diagnostic Procedures.

[Antibody](#) | [ELISA Kits](#) | [Protein](#) | [Reagents](#)