

SCYL1BP1 Rabbit pAb

CatalogNo: YT5369

Key Features

Host Species

- Rabbit

Reactivity

- Human, Mouse, Rat

Applications

- WB, ELISA, IHC

MW

- 45kD (Observed)

Isotype

- IgG

Storage

Storage* -15°C to -25°C/1 year (Do not lower than -25°C)

Formulation Liquid in PBS containing 50% glycerol, 0.5% BSA and 0.02% sodium azide.

Recommended Dilution Ratios

WB 1:500-2000

IHC 1:50-300

ELISA 1:2000-20000

Basic Information

Clonality Polyclonal

Immunogen Information

Immunogen The antiserum was produced against synthesized peptide derived from the N-terminal region of human GORAB. AA range:1-50

Specificity SCYL1BP1 Polyclonal Antibody detects endogenous levels of SCYL1BP1 protein.

Target Information

Gene name GORAB

Protein Name RAB6-interacting golgin

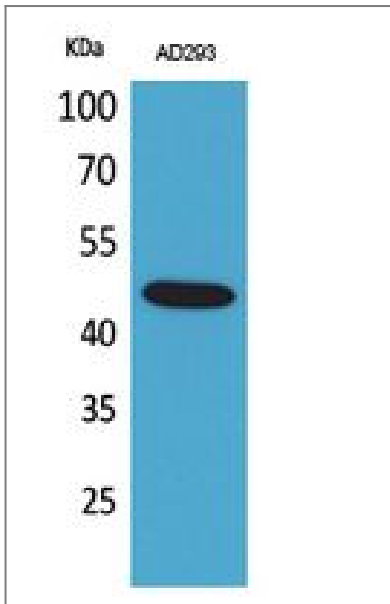
Organism	Gene ID	UniProt ID
Human	92344;	Q5T7V8;
Mouse	98376;	Q8BRM2;
Rat	304923;	B1H222;

Cellular Localization Cytoplasm . Golgi apparatus .

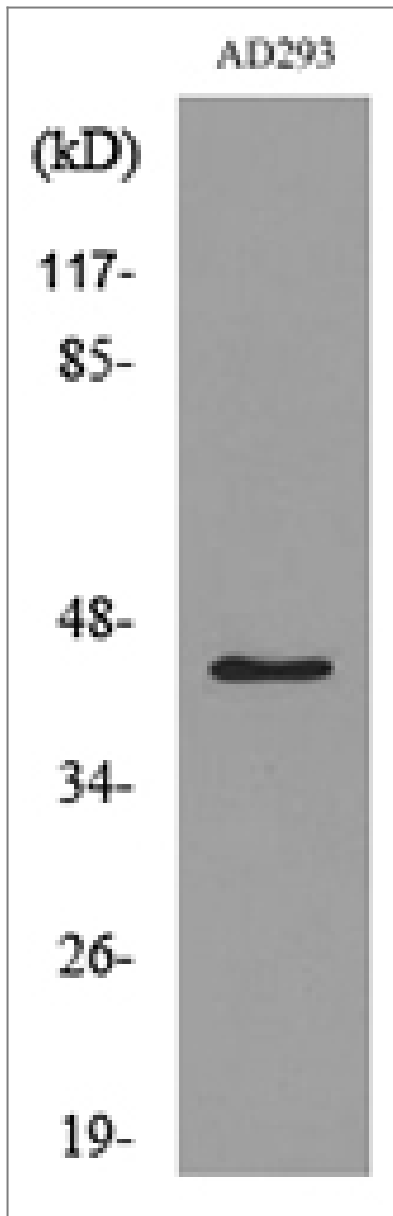
Tissue specificity Embryo,Pancreas,Testis,Trachea,

Function Caution:It is uncertain whether Met-1 or Met-26 is the initiator.,Disease:Defects in GORAB are the cause of geroderma osteodysplasticum (GO) [MIM:231070]; also known as geroderma osteodysplastica or Walt Disney dwarfism. GO is a rare autosomal recessive disorder characterized by lax, wrinkled skin, joint laxity and a typical face with a prematurely aged appearance. Skeletal signs include severe osteoporosis leading to frequent fractures, malar and mandibular hypoplasia and a variable degree of growth retardation.,similarity:Belongs to the GORAB family.,subunit:Interacts with SCYL1 (By similarity). Interacts with RCHY1 and RAB6A/RAB6.,

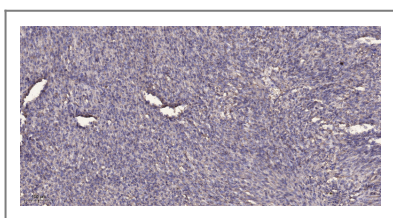
Validation Data



Western Blot analysis of AD293 cells using SCYL1BP1 Polyclonal Antibody. Secondary antibody(catalog#:RS0002) was diluted at 1:20000



Western blot analysis of lysate from AD293 cells, using GORAB Antibody.



Immunohistochemical analysis of paraffin-embedded human Colon cancer. 1, Antibody was diluted at 1:200(4° overnight). 2, Tris-EDTA,pH9.0 was used for antigen retrieval. 3,Secondary antibody was diluted at 1:200(room temperature, 45min).

Contact information

Orders: order@immunoway.com
 Support: tech@immunoway.com
 Telephone: 877-594-3616 (Toll Free), 408-747-0185
 Website: <http://www.immunoway.com>
 Address: 2200 Ringwood Ave San Jose, CA 95131 USA



Please scan the QR code to access additional product information:
SCYL1BP1 Rabbit pAb

