

IFN- α R2 Rabbit pAb

CatalogNo: YT5367

Key Features

Host Species

- Rabbit

Reactivity

- Human, Mouse

Applications

- WB, IHC, IF, ELISA

MW

- 57kD (Observed)

Isotype

- IgG

Recommended Dilution Ratios

WB 1:500-1:2000

IHC: 1:100-1:300

ELISA 1:20000

IF 1:50-200

Storage

Storage*

-15°C to -25°C/1 year (Do not lower than -25°C)

Formulation

Liquid in PBS containing 50% glycerol, 0.5% BSA and 0.02% sodium azide.

Basic Information

Clonality

Polyclonal

Immunogen Information

Immunogen

The antiserum was produced against synthesized peptide derived from the N-terminal region of human IFNAR2. AA range: 41-90

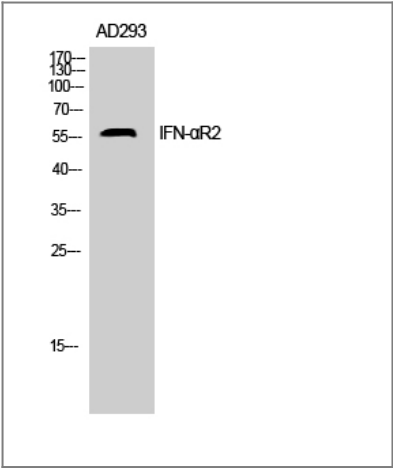
Specificity

IFN- α R2 Polyclonal Antibody detects endogenous levels of IFN- α R2 protein.

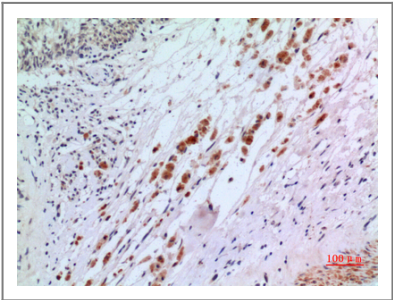
Target Information

Gene name	IFNAR2		
Protein Name	Interferon alpha/beta receptor 2		
	Organism	Gene ID	UniProt ID
	Human	3455;	P48551;
	Mouse		O35664;
Cellular Localization	[Isoform 1]: Cell membrane ; Single-pass type I membrane protein .; [Isoform 2]: Cell membrane ; Single-pass type I membrane protein .; [Isoform 3]: Secreted .		
Tissue specificity	Isoform 3 is detected in the urine (at protein level) (PubMed:8181059, PubMed:7759950). Expressed in blood cells. Expressed in lymphoblastoid and fibrosarcoma cell lines.		
Function	Disease:Defects in IFNAR2 are associated with susceptibility to hepatitis B virus infection (HBV infection) [MIM:610424]. Approximately one third of all cases of cirrhosis and half of all cases of hepatocellular carcinoma can be attributed to chronic HBV infection. HBV infection may result in subclinical or asymptomatic infection, acute self-limited hepatitis, or fulminant hepatitis requiring liver transplantation.,Function:Receptor for interferons alpha and beta. Isoform 1 and isoform 3 are directly involved in signal transduction due to their interaction with the TYR kinase, JAK1. Isoform 1 also interacts with the transcriptional factors, STAT1 and STAT2. Both forms are potent inhibitors of type I IFN activity.,PTM:Upon binding, it is phosphorylated on tyrosine residues.,similarity:Belongs to the type II cytokine receptor family.,		

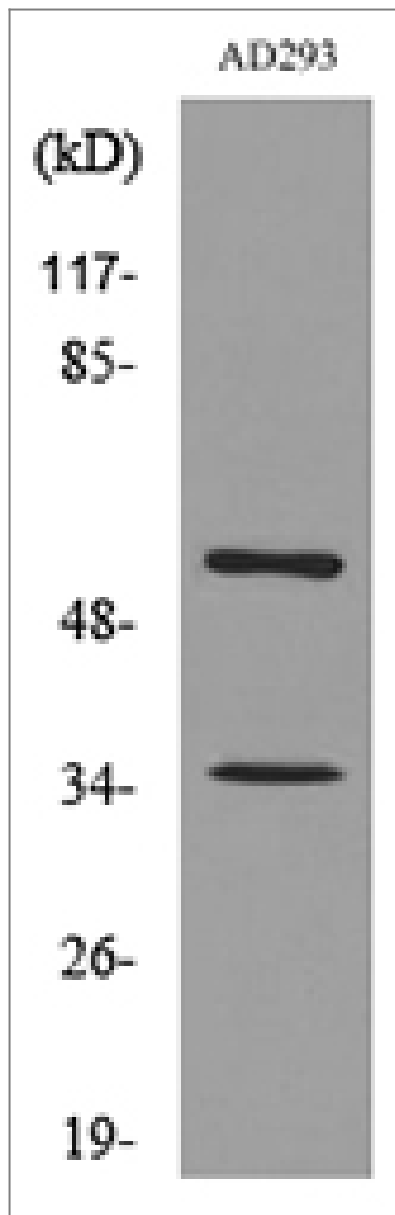
Validation Data



Western Blot analysis of AD293 cells using IFN-αR2 Polyclonal Antibody. Secondary antibody(catalog#:RS0002) was diluted at 1:20000



Immunohistochemical analysis of paraffin-embedded human-brain, antibody was diluted at 1:100



Western blot analysis of lysate from AD293 cells, using IFNAR2 Antibody.

Contact information

Orders: order@immunoway.com
Support: tech@immunoway.com
Telephone: 877-594-3616 (Toll Free), 408-747-0185
Website: <http://www.immunoway.com>
Address: 2200 Ringwood Ave San Jose, CA 95131 USA



Please scan the QR code
to access additional
product information:
IFN- α R2 Rabbit pAb

For Research Use Only. Not for Use in Diagnostic Procedures.

[Antibody](#) | [ELISA Kits](#) | [Protein](#) | [Reagents](#)