

ARP Rabbit pAb

CatalogNo: YT5309

| Key Features

Host Species

- Rabbit

Reactivity

- Human, Mouse, Rat

Applications

- WB, IHC, IF, ELISA

MW

- 20kD (Observed)

Isotype

- IgG

| Recommended Dilution Ratios

WB 1:500-1:2000

IHC: 1:100-1:300

ELISA 1:20000

IF 1:50-200

| Storage

Storage* -15°C to -25°C/1 year (Do not lower than -25°C)

Formulation Liquid in PBS containing 50% glycerol, 0.5% BSA and 0.02% sodium azide.

| Basic Information

Clonality Polyclonal

| Immunogen Information

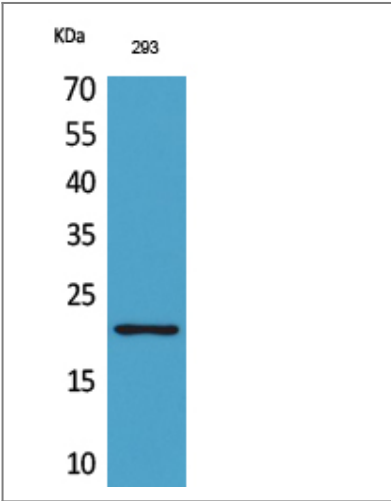
Immunogen The antiserum was produced against synthesized peptide derived from the Internal region of human MANF. AA range:11-60

Specificity ARP Polyclonal Antibody detects endogenous levels of ARP protein.

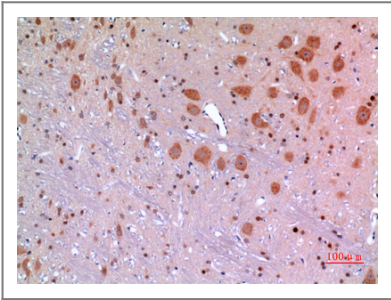
| Target Information

Gene name	MANF		
Protein Name	Mesencephalic astrocyte-derived neurotrophic factor		
	Organism	Gene ID	UniProt ID
	Human	7873 ;	P55145 ;
	Mouse		Q9CXI5 ;
	Rat		P0C5H9 ;
Cellular Localization	Secreted . Endoplasmic reticulum lumen . Sarcoplasmic reticulum lumen . Retained in the endoplasmic reticulum (ER), and sarcoplasmic reticulum (SR) under normal conditions (PubMed:22637475). Up-regulated and secreted by the ER/SR in response to ER stress and hypoxia (PubMed:22637475, PubMed:29497057). .		
Tissue specificity	Testis,		
Function	response to unfolded protein, response to organic substance, response to protein stimulus,		

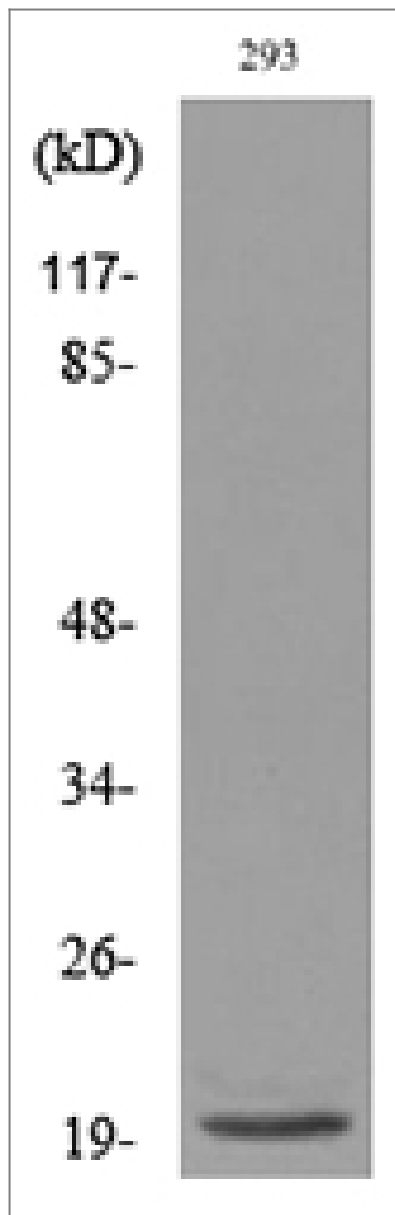
Validation Data



Western Blot analysis of 293 cells using ARP Polyclonal Antibody. Secondary antibody(catalog#:RS0002) was diluted at 1:20000



Immunohistochemical analysis of paraffin-embedded rat-brain, antibody was diluted at 1:100



Western blot analysis of lysate from 293 cells, using MANF Antibody.

Contact information

Orders: order@immunoway.com
Support: tech@immunoway.com
Telephone: 877-594-3616 (Toll Free), 408-747-0185
Website: <http://www.immunoway.com>
Address: 2200 Ringwood Ave San Jose, CA 95131 USA



Please scan the QR code
to access additional
product information:
ARP Rabbit pAb

For Research Use Only. Not for Use in Diagnostic Procedures.

[Antibody](#) | [ELISA Kits](#) | [Protein](#) | [Reagents](#)