

Osteoglycin Rabbit pAb

CatalogNo: YT5294

Key Features

Host Species

- Rabbit

Reactivity

- Human, Mouse

Applications

- WB, ELISA

MW

- 35kD (Observed)

Isotype

- IgG

Storage

Storage* -15°C to -25°C/1 year (Do not lower than -25°C)

Formulation Liquid in PBS containing 50% glycerol, 0.5% BSA and 0.02% sodium azide.

Recommended Dilution Ratios

WB 1:500-1:2000

ELISA 1:20000

Not yet tested in other applications.

Basic Information

Clonality Polyclonal

Immunogen Information

Immunogen The antiserum was produced against synthesized peptide derived from the C-terminal region of human OGN. AA range: 231-280

Specificity Osteoglycin Polyclonal Antibody detects endogenous levels of Osteoglycin protein.

Target Information

Gene name OGN

Protein Name Mimecan

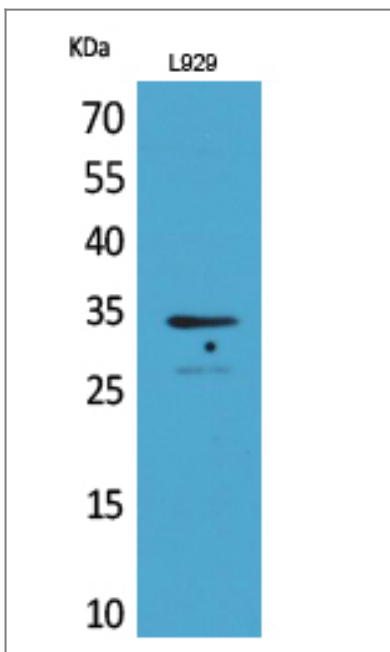
Organism	Gene ID	UniProt ID
Human	4969 ;	P20774 ;
Mouse	18295 ;	Q62000 ;

Cellular Localization Secreted, extracellular space, extracellular matrix .

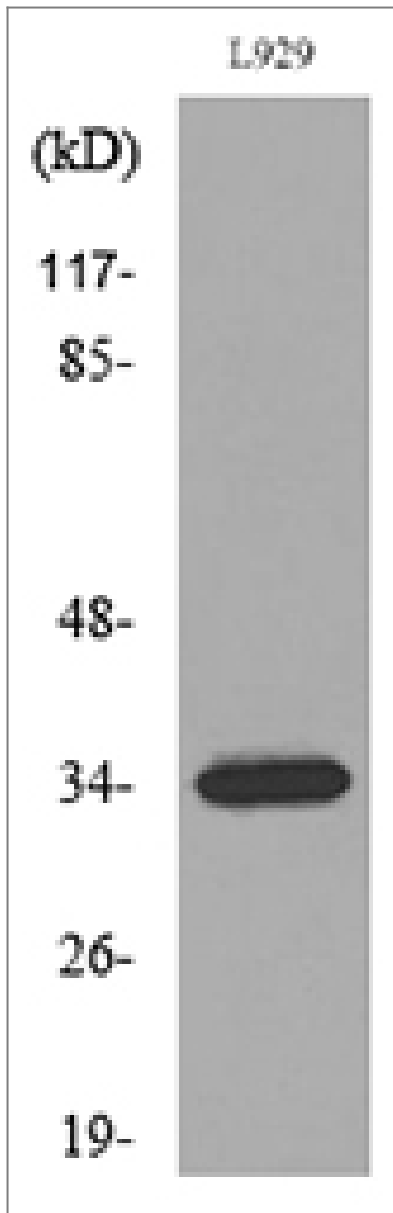
Tissue specificity Bone.

Function Function:Induces bone formation in conjunction with TGF-beta-1 or TGF-beta-2.,similarity:Belongs to the small leucine-rich proteoglycan (SLRP) family. Class III subfamily.,similarity:Contains 7 LRR (leucine-rich) repeats.,tissue specificity:Bone.,

Validation Data



Western Blot analysis of L929 cells using Osteoglycin Polyclonal Antibody. Secondary antibody(catalog#:RS0002) was diluted at 1:20000



Western blot analysis of lysate from L929 cells, using OGN Antibody.

Contact information

Orders: order@immunoway.com
Support: tech@immunoway.com
Telephone: 877-594-3616 (Toll Free), 408-747-0185
Website: <http://www.immunoway.com>
Address: 2200 Ringwood Ave San Jose, CA 95131 USA



Please scan the QR code to access additional product information:
Osteoglycin Rabbit pAb