

## CD276 Rabbit pAb

CatalogNo: YT5285

### Key Features

#### Host Species

- Rabbit

#### Reactivity

- Human, Mouse, Rat

#### Applications

- WB, IHC, IF, ELISA

#### MW

- 100kD (Observed)

#### Isotype

- IgG

### Recommended Dilution Ratios

**WB 1:500-1:2000**

**IHC: 1:100-300**

**ELISA 1:20000**

**IF 1:50-200**

### Storage

#### Storage\*

-15°C to -25°C/1 year (Do not lower than -25°C)

#### Formulation

Liquid in PBS containing 50% glycerol, 0.5% BSA and 0.02% sodium azide.

### Basic Information

#### Clonality

Polyclonal

### Immunogen Information

#### Immunogen

The antiserum was produced against synthesized peptide derived from the Internal region of human CD276. AA range: 271-320

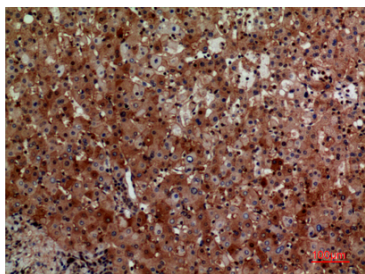
#### Specificity

CD276 Polyclonal Antibody detects endogenous levels of CD276 protein.

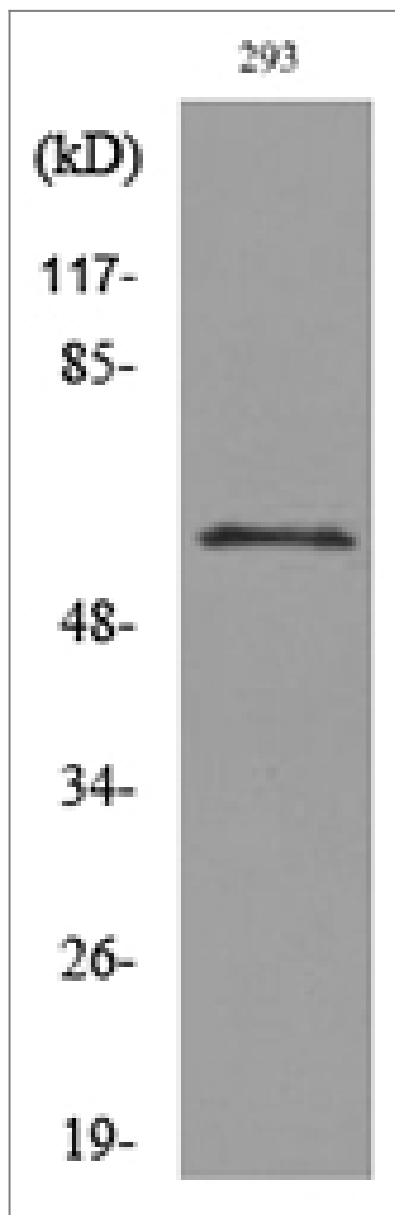
### Target Information

Gene name	CD276		
Protein Name	CD276 antigen		
	Organism	Gene ID	UniProt ID
	Human	<a href="#">80381</a> ;	<a href="#">Q5ZPR3</a> ;
	Mouse	<a href="#">102657</a> ;	<a href="#">Q8VE98</a> ;
	Rat	<a href="#">315716</a> ;	<a href="#">Q7TPB4</a> ;
Cellular Localization	Membrane ; Single-pass type I membrane protein .		
Tissue specificity	Ubiquitous but not detectable in peripheral blood lymphocytes or granulocytes. Weakly expressed in resting monocytes. Expressed in dendritic cells derived from monocytes. Expressed in epithelial cells of sinonasal tissue. Expressed in extravillous trophoblast cells and Hofbauer cells of the first trimester placenta and term placenta.		
Function	<p>Function:May participate in the regulation of T-cell-mediated immune response. May play a protective role in tumor cells by inhibiting natural-killer mediated cell lysis as well as a role of marker for detection of neuroblastoma cells. May be involved in the development of acute and chronic transplant rejection and in the regulation of lymphocytic activity at mucosal surfaces. Could also play a key role in providing the placenta and fetus with a suitable immunological environment throughout pregnancy. Both isoform 1 and isoform 2 appear to be redundant in their ability to modulate CD4 T-cell responses. Isoform 2 is shown to enhance the induction of cytotoxic T-cells and selectively stimulates interferon gamma production in the presence of T-cell receptor signaling.,induction:By LPS in monocytes and by ionomycin in T and B lymphocytes. Up-regulated in cells mediating rejection of human transplants.,miscellaneous:B7-H3 locus underwent genomic duplication leading to tandemly repeated immunoglobulin-like V and C domains (VC domains). The dominantly expressed human B7-H3 isoform contains tandemly duplicated VC domains. In contrast, mouse B7-H3 transcript contains only one single VC domain form due to an exon structure corresponding to V domain-(pseudoexon C)-(pseudoexon V)-C domain. This duplication appearing in primates is suggested to be very recent supporting a model of multiple independent emergence of tandem VC repeats within human and monkey species.,similarity:Belongs to the immunoglobulin superfamily. BTN/MOG family.,similarity:Contains 2 Ig-like C2-type (immunoglobulin-like) domains.,similarity:Contains 2 Ig-like V-type (immunoglobulin-like) domains.,subunit:Interacts with TREML2 and this interaction enhances T-cell activation.,tissue specificity:Ubiquitous but not detectable in peripheral blood lymphocytes or granulocytes. Weakly expressed in resting monocytes. Expressed in dendritic cells derived from monocytes. Expressed in epithelial cells of sinonasal tissue. Expressed in extravillous trophoblast cells and Hofbauer cells of the first trimester placenta and term placenta.,</p>		

| Validation Data



Immunohistochemical analysis of paraffin-embedded human-liver, antibody was diluted at 1:100



Western blot analysis of lysate from 293 cells, using CD276 Antibody.

## Contact information

Orders: [order@immunoway.com](mailto:order@immunoway.com)  
 Support: [tech@immunoway.com](mailto:tech@immunoway.com)  
 Telephone: 877-594-3616 (Toll Free), 408-747-0185  
 Website: <http://www.immunoway.com>  
 Address: 2200 Ringwood Ave San Jose, CA 95131 USA



Please scan the QR code  
 to access additional  
 product information:  
**CD276 Rabbit pAb**

