

## CD241 Rabbit pAb

CatalogNo: YT5284

### Key Features

#### Host Species

- Rabbit

#### Reactivity

- Human,Rat,Mouse,

#### Applications

- WB,IHC,IF,ELISA

#### MW

- 44kD (Observed)

#### Isotype

- IgG

### Recommended Dilution Ratios

**WB 1:500-1:2000**

**IHC: 1:100-300**

**ELISA 1:20000**

**IF 1:50-200**

### Storage

#### Storage\*

-15°C to -25°C/1 year(Do not lower than -25°C)

#### Formulation

Liquid in PBS containing 50% glycerol, 0.5% BSA and 0.02% sodium azide.

### Basic Information

#### Clonality

Polyclonal

### Immunogen Information

#### Immunogen

The antiserum was produced against synthesized peptide derived from the N-terminal region of human RHAG. AA range:1-50

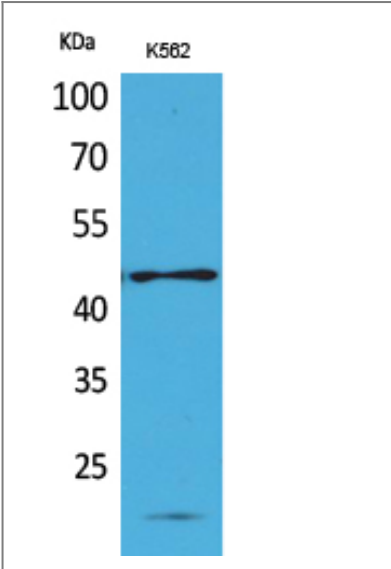
#### Specificity

CD241 Polyclonal Antibody detects endogenous levels of CD241 protein.

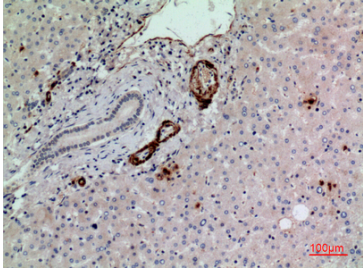
### Target Information

Gene name	RHAG		
Protein Name	Ammonium transporter Rh type A		
	Organism	Gene ID	UniProt ID
	Human	<a href="#">6005</a> ;	<a href="#">Q02094</a> ;
	Mouse	<a href="#">19743</a> ;	<a href="#">Q9QUT0</a> ;
	Rat	<a href="#">65207</a> ;	<a href="#">Q7TNK7</a> ;
Cellular Localization	Membrane ; Multi-pass membrane protein.		
Tissue specificity	Erythrocytes.		
Function	Disease:Defects in RHAG are the cause of regulator type Rh-null hemolytic anemia (RHN) [MIM:268150]; also called Rh-deficiency syndrome. RHN is a form of chronic hemolytic anemia in which the red blood cells have a stomatocytosis and spherocytosis morphology, an increased osmotic fragility, an altered ion transport system, and abnormal membrane phospholipid organization.,Function:Associated with rhesus blood group antigen expression. May be part of an oligomeric complex which is likely to have a transport or channel function in the erythrocyte membrane.,similarity:Belongs to the ammonium transporter (TC 2.A.49) family. Rh subfamily.,subunit:Heterotetramer.,tissue specificity:Erythrocytes.,		

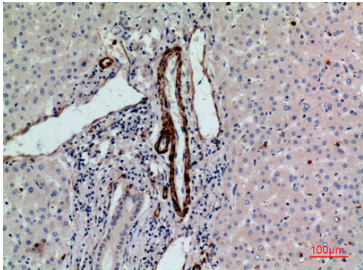
| Validation Data



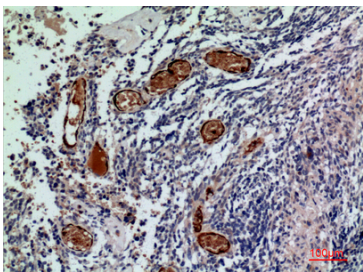
Western Blot analysis of K562 cells using CD241 Polyclonal Antibody. Secondary antibody(catalog#:RS0002) was diluted at 1:20000



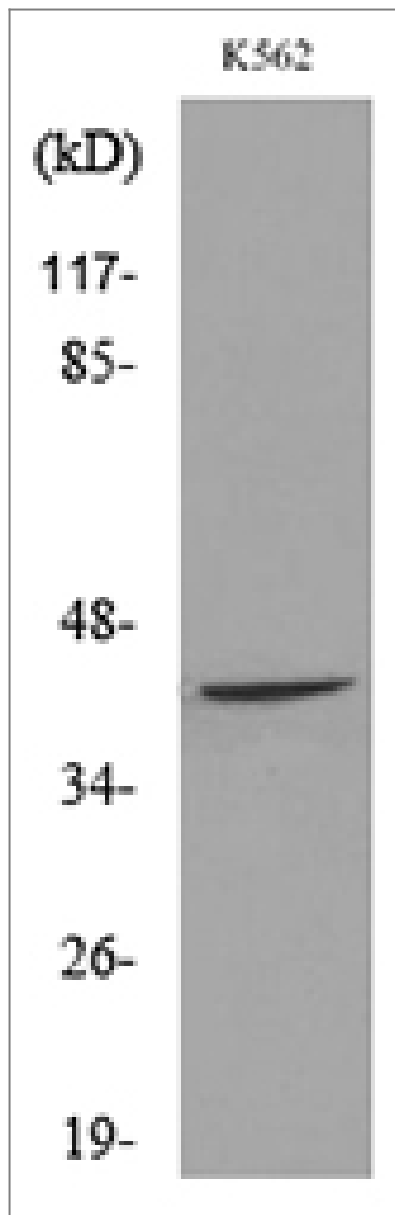
Immunohistochemical analysis of paraffin-embedded human-liver, antibody was diluted at 1:100



Immunohistochemical analysis of paraffin-embedded human-liver, antibody was diluted at 1:100



Immunohistochemical analysis of paraffin-embedded human-brain, antibody was diluted at 1:100



Western blot analysis of lysate from K562 cells, using RHAG Antibody.

## Contact information

Orders: [order@immunoway.com](mailto:order@immunoway.com)  
Support: [tech@immunoway.com](mailto:tech@immunoway.com)  
Telephone: 877-594-3616 (Toll Free), 408-747-0185  
Website: <http://www.immunoway.com>  
Address: 2200 Ringwood Ave San Jose, CA 95131 USA



Please scan the QR code  
to access additional  
product information:  
**CD241 Rabbit pAb**

For Research Use Only. Not for Use in Diagnostic Procedures.

[Antibody](#) | [ELISA Kits](#) | [Protein](#) | [Reagents](#)