

## CD300g Rabbit pAb

CatalogNo: YT5272

### Key Features

#### Host Species

- Rabbit

#### Reactivity

- Human, Mouse

#### Applications

- WB, IHC, IF, ELISA

#### MW

- 36kD (Observed)

#### Isotype

- IgG

### Recommended Dilution Ratios

**WB 1:500-1:2000**

**IHC: 1:100-300**

**ELISA 1:20000**

**IF 1:50-200**

### Storage

#### Storage\*

-15°C to -25°C/1 year (Do not lower than -25°C)

#### Formulation

Liquid in PBS containing 50% glycerol, 0.5% BSA and 0.02% sodium azide.

### Basic Information

#### Clonality

Polyclonal

### Immunogen Information

#### Immunogen

The antiserum was produced against synthesized peptide derived from the Internal region of human CD300LG. AA range: 41-90

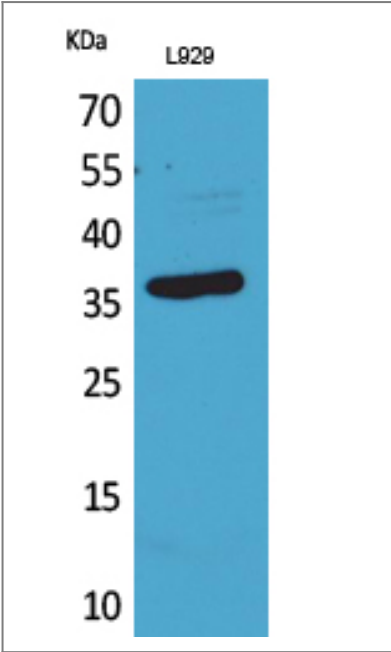
#### Specificity

CD300g Polyclonal Antibody detects endogenous levels of CD300g protein.

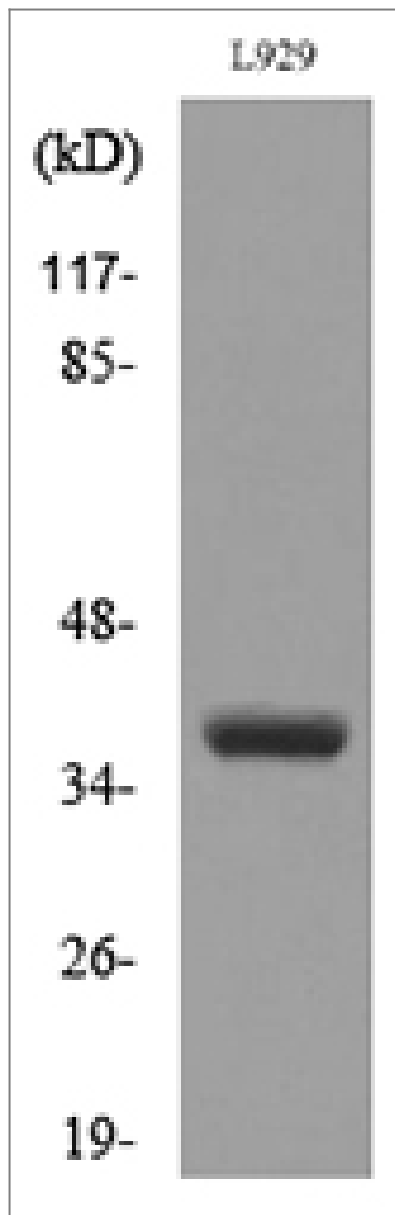
### Target Information

Gene name	CD300LG		
Protein Name	CMRF35-like molecule 9		
	Organism	Gene ID	UniProt ID
	Human	<a href="#">146894</a> ;	<a href="#">Q6UXG3</a> ;
	Mouse	<a href="#">52685</a> ;	<a href="#">Q1ERP8</a> ;
Cellular Localization	Apical cell membrane ; Single-pass type I membrane protein . Basolateral cell membrane ; Single-pass type I membrane protein . Endosome, multivesicular body membrane ; Single-pass type I membrane protein . Transcytoses across the cytoplasm. .		
Tissue specificity	Highly expressed in heart, skeletal muscle and placenta.		
Function	Domain:Ig-like V-type domain mediates binding to lymphocyte.,Function:Receptor which may mediate L-selectin-dependent lymphocyte rollings. Binds SELL in a calcium dependent manner. Binds lymphocyte.,PTM:O-glycosylated with sialylated oligosaccharides.,similarity:Belongs to the CD300 family.,similarity:Contains 1 Ig-like V-type (immunoglobulin-like) domain.,tissue specificity:Highly expressed in heart, skeletal muscle and placenta.,		

Validation Data



Western Blot analysis of L929 cells using CD300g Polyclonal Antibody. Secondary antibody(catalog#:RS0002) was diluted at 1:20000



Western blot analysis of lysate from L929 cells, using CD300LG Antibody.

## Contact information

Orders: [order@immunoway.com](mailto:order@immunoway.com)  
Support: [tech@immunoway.com](mailto:tech@immunoway.com)  
Telephone: 877-594-3616 (Toll Free), 408-747-0185  
Website: <http://www.immunoway.com>  
Address: 2200 Ringwood Ave San Jose, CA 95131 USA



Please scan the QR code  
to access additional  
product information:  
**CD300g Rabbit pAb**

For Research Use Only. Not for Use in Diagnostic Procedures.

[Antibody](#) | [ELISA Kits](#) | [Protein](#) | [Reagents](#)