

Nectin 3 Rabbit pAb

CatalogNo: YT5261

| Key Features

Host Species

- Rabbit

Reactivity

- Human, Mouse, Rat

Applications

- WB, ELISA

MW

- 60kD (Observed)

Isotype

- IgG

| Recommended Dilution Ratios

WB 1:500-1:2000

ELISA 1:20000

Not yet tested in other applications.

| Storage

Storage*

-15°C to -25°C/1 year (Do not lower than -25°C)

Formulation

Liquid in PBS containing 50% glycerol, 0.5% BSA and 0.02% sodium azide.

| Basic Information

Clonality

Polyclonal

| Immunogen Information

Immunogen

The antiserum was produced against synthesized peptide derived from the Internal region of human PVRL3. AA range: 311-360

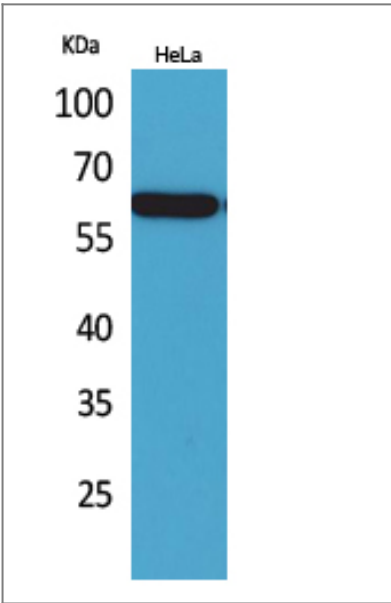
Specificity

Nectin 3 Polyclonal Antibody detects endogenous levels of Nectin 3 protein.

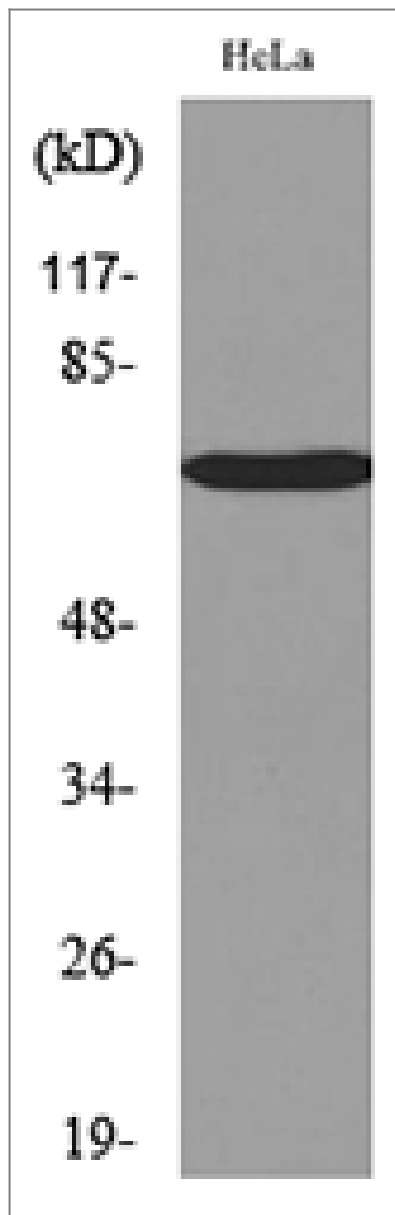
| Target Information

Gene name	PVRL3		
Protein Name	Poliovirus receptor-related protein 3		
	Organism	Gene ID	UniProt ID
	Human	25945 ;	Q9NQS3 ;
	Mouse	58998 ;	Q9JLB9 ;
Cellular Localization	Cell membrane ; Single-pass membrane protein . Cell junction, synapse, postsynaptic cell membrane .		
Tissue specificity	Predominantly expressed in testis and placenta as well as in many cell lines, including epithelial cell lines.		
Function	Function:Plays a role in cell-cell adhesion through heterophilic trans-interactions with nectin-like proteins or nectins, such as trans-interaction with PVRL2/nectin-2 at Sertoli-spermatid junctions. Trans-interaction with PVR induces activation of CDC42 and RAC small G proteins through common signaling molecules such as SRC and RAP1. Also involved in the formation of cell-cell junctions, including adherens junctions and synapses. Induces endocytosis-mediated down-regulation of PVR from the cell surface, resulting in reduction of cell movement and proliferation. Plays a role in the morphology of the ciliary body.,similarity:Belongs to the nectin family.,similarity:Contains 1 Ig-like V-type (immunoglobulin-like) domain.,similarity:Contains 2 Ig-like C2-type (immunoglobulin-like) domains.,subunit:Cis- and trans-homodimer. Can form trans-heterodimers with PVRL1/nectin-1, PVRL2/nectin-2, PVR, IGSF4B/Necl-1 and with IGSF4. Interacts with MLLT4/afadin. Binds with low affinity to TIGIT.,tissue specificity:Predominantly expressed in testis and placenta as well as in many cell lines, including epithelial cell lines.,		

| Validation Data



Western Blot analysis of HeLa cells using Nectin 3 Polyclonal Antibody. Secondary antibody(catalog#:RS0002) was diluted at 1:20000



Western blot analysis of lysate from HeLa cells, using PVRL3 Antibody.

Contact information

Orders: order@immunoway.com
Support: tech@immunoway.com
Telephone: 877-594-3616 (Toll Free), 408-747-0185
Website: <http://www.immunoway.com>
Address: 2200 Ringwood Ave San Jose, CA 95131 USA



Please scan the QR code
to access additional
product information:
Nectin 3 Rabbit pAb

For Research Use Only. Not for Use in Diagnostic Procedures.

[Antibody](#) | [ELISA Kits](#) | [Protein](#) | [Reagents](#)