

CD100 Rabbit pAb

CatalogNo: YT5259

| Key Features

Host Species

- Rabbit

Reactivity

- Human, Mouse, Rat

Applications

- WB, ELISA

MW

- 95kD (Observed)

Isotype

- IgG

| Recommended Dilution Ratios

WB 1:500-1:2000

ELISA 1:20000

Not yet tested in other applications.

| Storage

Storage*

-15°C to -25°C/1 year (Do not lower than -25°C)

Formulation

Liquid in PBS containing 50% glycerol, 0.5% BSA and 0.02% sodium azide.

| Basic Information

Clonality

Polyclonal

| Immunogen Information

Immunogen

The antiserum was produced against synthesized peptide derived from the N-terminal region of human SEMA4D. AA range: 61-110

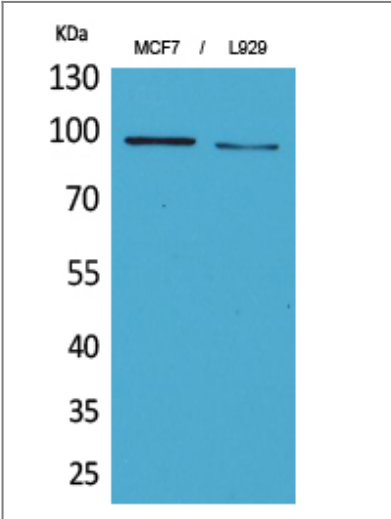
Specificity

CD100 Polyclonal Antibody detects endogenous levels of CD100 protein.

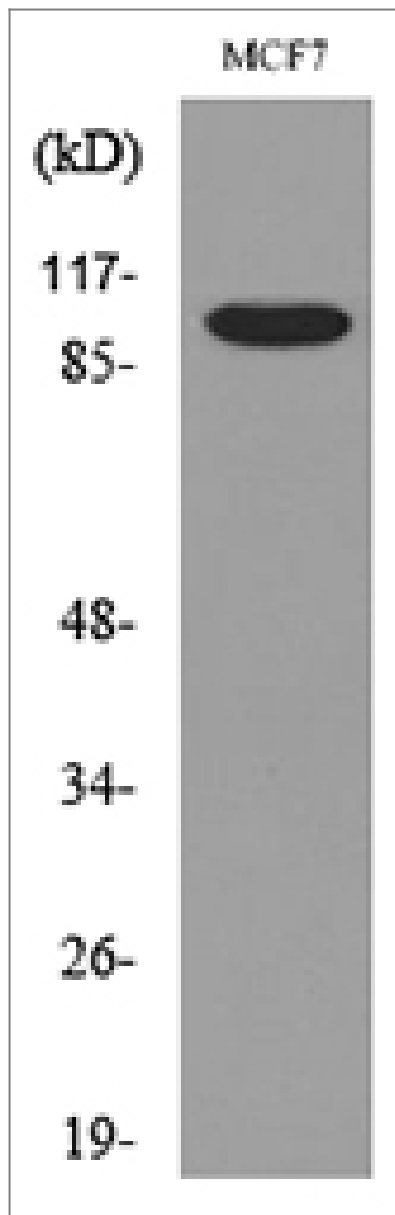
| Target Information

| | | | |
|-----------------------|--|------------------------|-------------------------|
| Gene name | SEMA4D | | |
| Protein Name | Semaphorin-4D | | |
| | Organism | Gene ID | UniProt ID |
| | Human | 10507; | Q92854; |
| | Mouse | 20354; | O09126; |
| Cellular Localization | Cell membrane ; Single-pass type I membrane protein . | | |
| Tissue specificity | Strongly expressed in skeletal muscle, peripheral blood lymphocytes, spleen, and thymus and also expressed at lower levels in testes, brain, kidney, small intestine, prostate, heart, placenta, lung and pancreas, but not in colon and liver. | | |
| Function | Function:May play a functional role in the immune system, as well as in the nervous system. Induces B-cells to aggregate and improves their viability in vitro.,similarity:Belongs to the semaphorin family.,similarity:Contains 1 Ig-like C2-type (immunoglobulin-like) domain.,similarity:Contains 1 PSI domain.,similarity:Contains 1 Sema domain.,subunit:Homodimer. Binds PLXNB1.,tissue specificity:Strongly expressed in skeletal muscle, peripheral blood lymphocytes, spleen, and thymus and also expressed at lower levels in testes, brain, kidney, small intestine, prostate, heart, placenta, lung and pancreas, but not in colon and liver., | | |

Validation Data



Western Blot analysis of MCF7, L929 cells using CD100 Polyclonal Antibody. Secondary antibody(catalog#:RS0002) was diluted at 1:20000



Western blot analysis of lysate from MCF7 cells, using SEMA4D Antibody.

Contact information

Orders: order@immunoway.com
Support: tech@immunoway.com
Telephone: 877-594-3616 (Toll Free), 408-747-0185
Website: <http://www.immunoway.com>
Address: 2200 Ringwood Ave San Jose, CA 95131 USA



Please scan the QR code
to access additional
product information:
CD100 Rabbit pAb

For Research Use Only. Not for Use in Diagnostic Procedures.

[Antibody](#) | [ELISA Kits](#) | [Protein](#) | [Reagents](#)