

CD85g Rabbit pAb

CatalogNo: YT5258

Key Features

Host Species

- Rabbit

Reactivity

- Human

Applications

- WB,IHC,IF,ELISA

MW

- 55kD (Observed)

Isotype

- IgG

Recommended Dilution Ratios

WB 1:500-1:2000

IHC: 1:100-300

ELISA 1:20000

IF 1:50-200

Storage

Storage* -15°C to -25°C/1 year(Do not lower than -25°C)

Formulation Liquid in PBS containing 50% glycerol, 0.5% BSA and 0.02% sodium azide.

Basic Information

Clonality Polyclonal

Immunogen Information

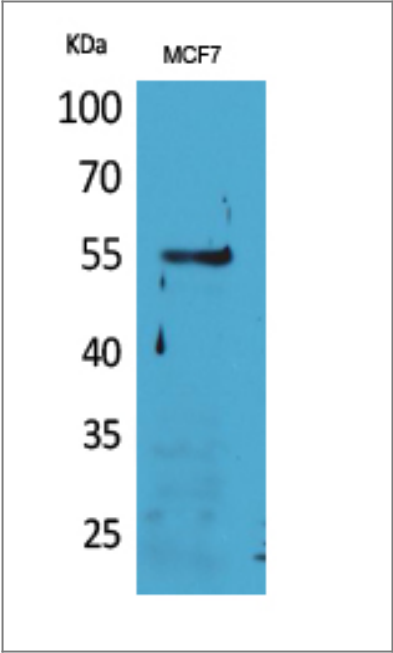
Immunogen The antiserum was produced against synthesized peptide derived from the Internal region of human LILRA4. AA range:391-440

Specificity CD85g Polyclonal Antibody detects endogenous levels of CD85g protein.

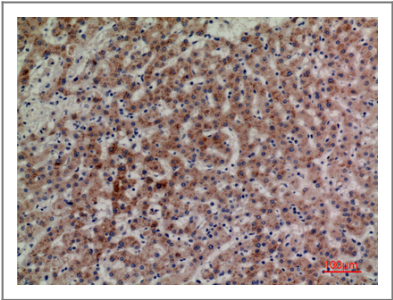
Target Information

Gene name	LILRA4		
Protein Name	Leukocyte immunoglobulin-like receptor subfamily A member 4		
	Organism	Gene ID	UniProt ID
	Human	23547 ;	P59901 ;
Cellular Localization	Cell membrane ; Single-pass type I membrane protein .		
Tissue specificity	Detected on plasmacytoid dendritic cells (at protein level). Detected on plasmacytoid dendritic cells, but not on monocytes or B cells.		
Function	Function:May act as receptor for class I MHC antigens. Ligand binding leads to the activation of eosinophils and to the release of RNASE2, IL4 and leukotriene C4.,similarity:Contains 4 Ig-like C2-type (immunoglobulin-like) domains.,tissue specificity:Detected on eosinophils, neutrophils and monocytes.,		

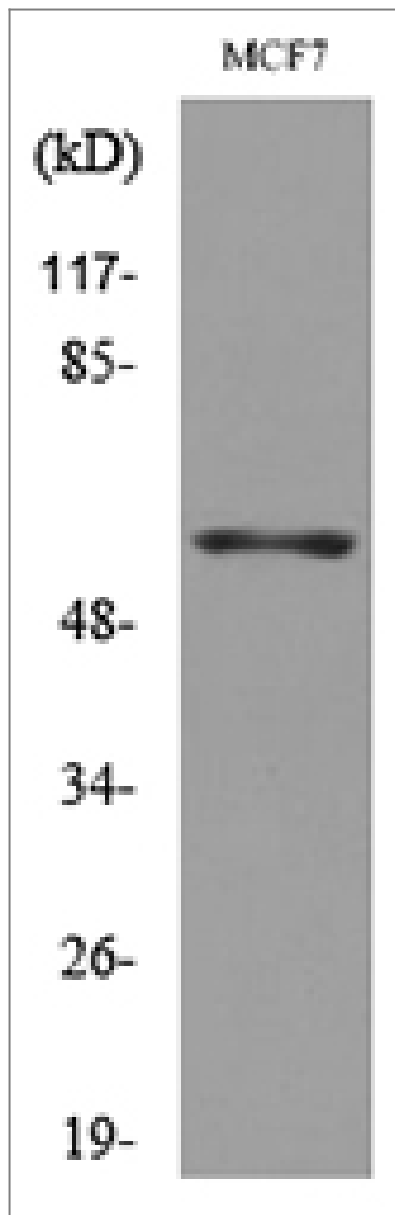
| Validation Data



Western Blot analysis of MCF7 cells using CD85g Polyclonal Antibody. Secondary antibody(catalog#:RS0002) was diluted at 1:20000



Immunohistochemical analysis of paraffin-embedded human-liver, antibody was diluted at 1:100



Western blot analysis of lysate from MCF7 cells, using LILRA4 Antibody.

Contact information

Orders: order@immunoway.com
Support: tech@immunoway.com
Telephone: 877-594-3616 (Toll Free), 408-747-0185
Website: <http://www.immunoway.com>
Address: 2200 Ringwood Ave San Jose, CA 95131 USA



Please scan the QR code
to access additional
product information:
CD85g Rabbit pAb

For Research Use Only. Not for Use in Diagnostic Procedures.

[Antibody](#) | [ELISA Kits](#) | [Protein](#) | [Reagents](#)