

# Integrin $\alpha$ 4 Rabbit pAb

CatalogNo: YT5248

## Key Features

### Host Species

- Rabbit

### Reactivity

- Human, Mouse, Rat

### Applications

- WB, IHC, IF, ELISA

### MW

- 120kD (Observed)

### Isotype

- IgG

## Storage

**Storage\*** -15°C to -25°C/1 year (Do not lower than -25°C)

**Formulation** Liquid in PBS containing 50% glycerol, 0.5% BSA and 0.02% sodium azide.

## Recommended Dilution Ratios

**WB 1:500-1:2000**

**IHC: 1:100-300**

**ELISA 1:20000**

**IF 1:50-200**

## Basic Information

**Clonality** Polyclonal

## Immunogen Information

**Immunogen** The antiserum was produced against synthesized peptide derived from the Internal region of human ITGA4. AA range:571-620

**Specificity** Integrin  $\alpha$ 4 Polyclonal Antibody detects endogenous levels of Integrin  $\alpha$ 4 protein.

## Target Information

**Gene name** ITGA4

**Protein Name** Integrin alpha-4

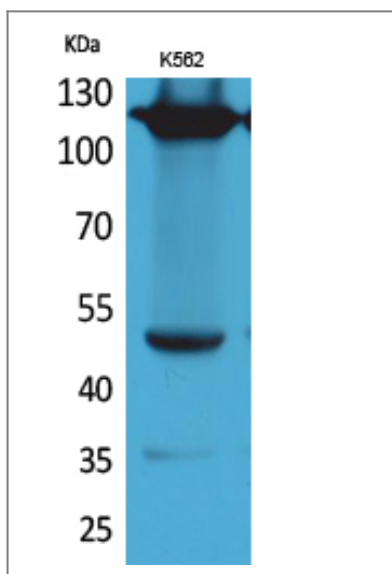
Organism	Gene ID	UniProt ID
Human	<a href="#">3676</a> ;	<a href="#">P13612</a> ;
Mouse	<a href="#">16401</a> ;	<a href="#">Q00651</a> ;

**Cellular Localization** Membrane; Single-pass type I membrane protein.

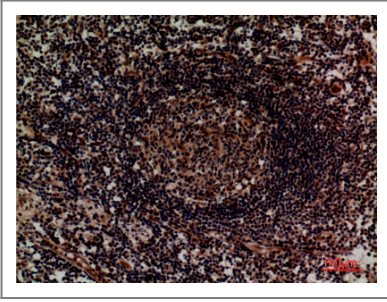
**Tissue specificity** Lymph,Peripheral blood,Prostate,Spleen,Testis,

**Function** Domain:The SG1 motif is involved in binding to chondroitin sulfate glycosaminoglycan and cell adhesion.,Function:Integrins alpha-4/beta-1 (VLA-4) and alpha-4/beta-7 are receptors for fibronectin. They recognize one or more domains within the alternatively spliced CS-1 and CS-5 regions of fibronectin. They are also receptors for VCAM1. Integrin alpha-4/beta-1 recognizes the sequence Q-I-D-S in VCAM1. Integrin alpha-4/beta-7 is also a receptor for MADCAM1. It recognizes the sequence L-D-T in MADCAM1. On activated endothelial cells integrin VLA-4 triggers homotypic aggregation for most VLA-4-positive leukocyte cell lines. It may also participate in cytolytic T-cell interactions with target cells.,PTM:Phosphorylation on Ser-1027 inhibits PXN binding.,similarity:Belongs to the integrin alpha chain family.,similarity:Contains 7 FG-GAP repeats.,subunit:Heterodimer of an alpha and a beta subunit. The alpha subunit can sometimes be cleaved into two non-covalently associated fragments. Alpha-4 associates with either beta-1 or beta-7. Alpha-4 interacts with PXN, LPXN, and TGFB1I1/HIC5. Interacts with CSPG4 through CSPG4 chondroitin sulfate glycosaminoglycan.,

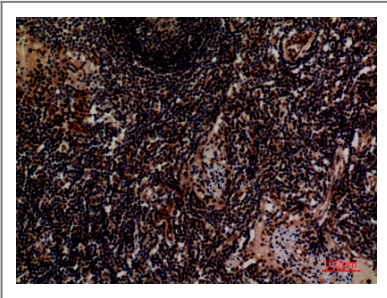
## Validation Data



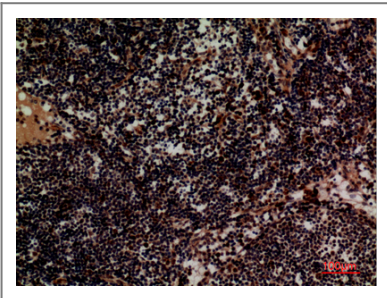
Western Blot analysis of K562 cells using Integrin  $\alpha$ 4 Polyclonal Antibody. Antibody was diluted at 1:1000. Secondary antibody(catalog#:RS0002) was diluted at 1:20000



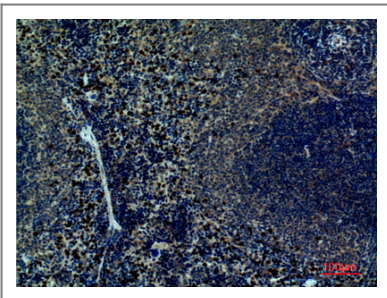
Immunohistochemical analysis of paraffin-embedded human-lymph, antibody was diluted at 1:100



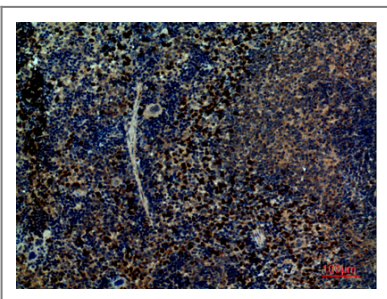
Immunohistochemical analysis of paraffin-embedded human-lymph, antibody was diluted at 1:100



Immunohistochemical analysis of paraffin-embedded human-lymph, antibody was diluted at 1:100



Immunohistochemical analysis of paraffin-embedded mouse-spleen, antibody was diluted at 1:100



Immunohistochemical analysis of paraffin-embedded mouse-spleen, antibody was diluted at 1:100

## | Contact information

Orders: order@immunoway.com  
Support: tech@immunoway.com  
Telephone: 877-594-3616 (Toll Free), 408-747-0185  
Website: <http://www.immunoway.com>  
Address: 2200 Ringwood Ave San Jose, CA 95131 USA



Please scan the QR code  
to access additional  
product information:  
**Integrin  $\alpha$ 4 Rabbit  
pAb**

---

For Research Use Only. Not for Use in Diagnostic Procedures.

[Antibody](#) | [ELISA Kits](#) | [Protein](#) | [Reagents](#)