

## CD32-B/C Rabbit pAb

CatalogNo: YT5246

### Key Features

#### Host Species

- Rabbit

#### Reactivity

- Human

#### Applications

- WB,ELISA

#### MW

- 35kD (Observed)

#### Isotype

- IgG

### Storage

**Storage\*** -15°C to -25°C/1 year(Do not lower than -25°C)

**Formulation** Liquid in PBS containing 50% glycerol, 0.5% BSA and 0.02% sodium azide.

### Recommended Dilution Ratios

**WB 1:500-1:2000**

**ELISA 1:20000**

**Not yet tested in other applications.**

### Basic Information

**Clonality** Polyclonal

### Immunogen Information

**Immunogen** The antiserum was produced against synthesized peptide derived from the Internal region of human FCGR2B/C. AA range:141-190

**Specificity** CD32-B/C Polyclonal Antibody detects endogenous levels of CD32-B/C protein.

### Target Information

**Gene name** FCGR2B/FCGR2C

**Protein Name** Low affinity immunoglobulin gamma Fc region receptor II-b/Low affinity immunoglobulin gamma Fc region receptor II-c

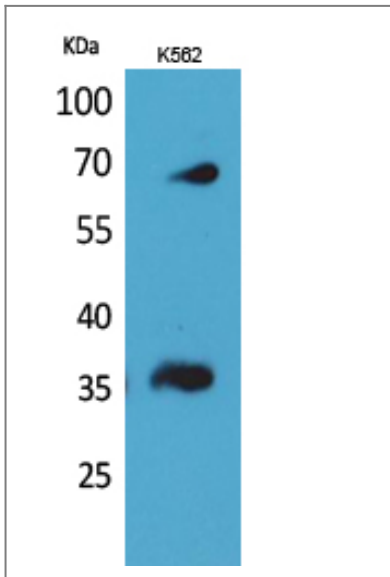
Organism	Gene ID	UniProt ID
Human	<a href="#">2213</a> ;	<a href="#">P31994</a> ;

**Cellular Localization** Cell membrane; Single-pass type I membrane protein.

**Tissue specificity** Is the most broadly distributed Fc-gamma-receptor. Expressed in monocyte, neutrophils, macrophages, basophils, eosinophils, Langerhans cells, B-cells, platelets cells and placenta (endothelial cells). Not detected in natural killer cells.

**Function** immune response,

## Validation Data



Western Blot analysis of K562 cells using CD32-B/C Polyclonal Antibody. Secondary antibody(catalog#:RS0002) was diluted at 1:20000

## Contact information

Orders: [order@immunoway.com](mailto:order@immunoway.com)  
Support: [tech@immunoway.com](mailto:tech@immunoway.com)  
Telephone: 877-594-3616 (Toll Free), 408-747-0185  
Website: <http://www.immunoway.com>  
Address: 2200 Ringwood Ave San Jose, CA 95131 USA



Please scan the QR code to access additional product information:  
**CD32-B/C Rabbit pAb**

