

TFPI Rabbit pAb

CatalogNo: YT5235

Key Features

Host Species

- Rabbit

Reactivity

- Human, Mouse, Rat

Applications

- WB, ELISA

MW

- 34kD (Observed)

Isotype

- IgG

Recommended Dilution Ratios

WB 1:500-1:2000

ELISA 1:20000

Not yet tested in other applications.

Storage

Storage*

-15°C to -25°C/1 year (Do not lower than -25°C)

Formulation

Liquid in PBS containing 50% glycerol, 0.5% BSA and 0.02% sodium azide.

Basic Information

Clonality

Polyclonal

Immunogen Information

Immunogen

The antiserum was produced against synthesized peptide derived from the C-terminal region of human TFPI. AA range: 251-300

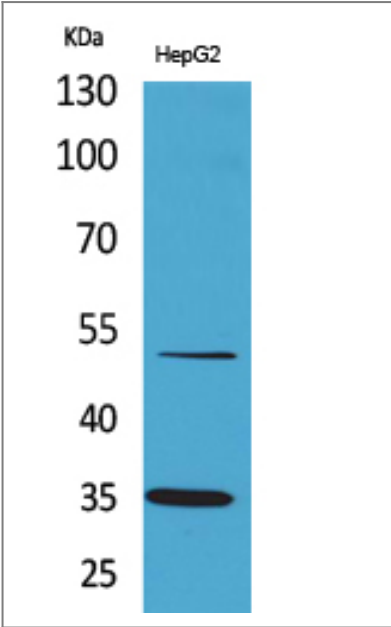
Specificity

TFPI Polyclonal Antibody detects endogenous levels of TFPI protein.

Target Information

Gene name	TFPI		
Protein Name	Tissue factor pathway inhibitor		
	Organism	Gene ID	UniProt ID
	Human	7035 ;	P10646 ;
	Mouse		O54819 ;
Cellular Localization	[Isoform Alpha]: Secreted.; [Isoform Beta]: Microsome membrane ; Lipid-anchor, GPI-anchor .		
Tissue specificity	Mostly in endothelial cells.		
Function	Domain:This inhibitor contains three inhibitory domains. The first domain interacts with VIIa and TF, the second one with Xa.,Function:Inhibits factor X (X(a)) directly and, in a Xa-dependent way, inhibits VIIa/tissue factor activity, presumably by forming a quaternary Xa/LACI/VIIa/TF complex. It possesses an antithrombotic action and also the ability to associate with lipoproteins in plasma.,online information:TFPI entry,PTM:O-glycosylated.,similarity:Contains 2 BPTI/Kunitz inhibitor domains.,similarity:Contains 3 BPTI/Kunitz inhibitor domains.,tissue specificity:Mostly in endothelial cells.,		

| Validation Data



Western Blot analysis of HepG2 cells using TFPI Polyclonal Antibody. Secondary antibody(catalog#:RS0002) was diluted at 1:20000

| Contact information

Orders: order@immunoway.com
Support: tech@immunoway.com
Telephone: 877-594-3616 (Toll Free), 408-747-0185
Website: <http://www.immunoway.com>
Address: 2200 Ringwood Ave San Jose, CA 95131 USA



Please scan the QR code
to access additional
product information:
TFPI Rabbit pAb

For Research Use Only. Not for Use in Diagnostic Procedures.

[Antibody](#) | [ELISA Kits](#) | [Protein](#) | [Reagents](#)