

## SNAP 23 Rabbit pAb

CatalogNo: YT5231

### Key Features

#### Host Species

- Rabbit

#### Reactivity

- Human,Rat,Mouse,

#### Applications

- WB,IHC,IF,ELISA

#### MW

- 25kD (Observed)

#### Isotype

- IgG

### Recommended Dilution Ratios

**WB 1:500-1:2000**

**IHC: 1:100-300**

**ELISA 1:20000**

**IF 1:50-200**

### Storage

#### Storage\*

-15°C to -25°C/1 year(Do not lower than -25°C)

#### Formulation

Liquid in PBS containing 50% glycerol, 0.5% BSA and 0.02% sodium azide.

### Basic Information

#### Clonality

Polyclonal

### Immunogen Information

#### Immunogen

The antiserum was produced against synthesized peptide derived from the C-terminal region of human SNAP23. AA range:151-200

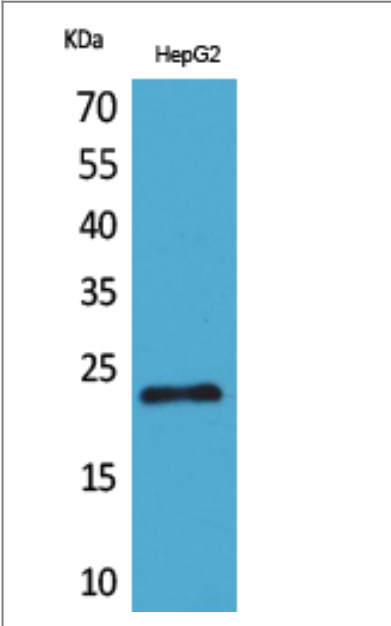
#### Specificity

SNAP 23 Polyclonal Antibody detects endogenous levels of SNAP 23 protein.

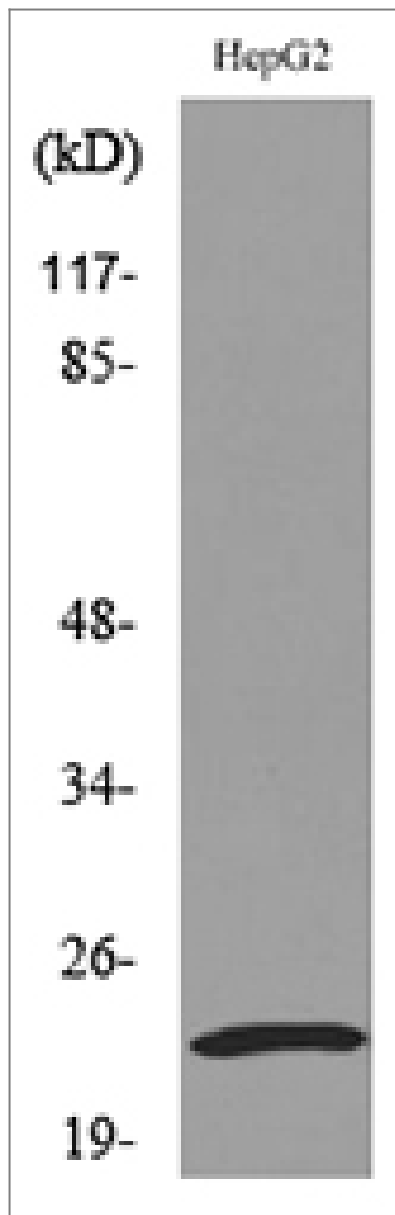
### Target Information

Gene name	SNAP-23		
Protein Name	Synaptosomal-associated protein 23		
	Organism	Gene ID	UniProt ID
	Human	<a href="#">8773</a> ;	<a href="#">O00161</a> ;
	Mouse		<a href="#">O09044</a> ;
Cellular Localization	Cell membrane; Peripheral membrane protein. Cell membrane; Lipid-anchor. Cell junction, synapse, synaptosome. Mainly localized to the plasma membrane.		
Tissue specificity	Ubiquitous. Highest levels where found in placenta.		
Function	Function:Essential component of the high affinity receptor for the general membrane fusion machinery and an important regulator of transport vesicle docking and fusion.,similarity:Belongs to the SNAP-25 family.,similarity:Contains 2 t-SNARE coiled-coil homology domains.,subcellular location:Mainly localized to the plasma membrane.,subunit:Binds simultaneously to SNAP25BP and SYN4. Found in a complex with VAMP8 and STX4 in pancreas (By similarity). Binds tightly to multiple syntaxins and synaptobrevins/VAMPs. Found in a complex with VAMP8 and STX1A.,tissue specificity:Ubiquitous. Highest levels where found in placenta.,		

| Validation Data



Western Blot analysis of HepG2 cells using SNAP 23 Polyclonal Antibody. Secondary antibody(catalog#:RS0002) was diluted at 1:20000



Western blot analysis of lysate from HepG2 cells, using SNAP23 Antibody.

## Contact information

Orders: [order@immunoway.com](mailto:order@immunoway.com)  
Support: [tech@immunoway.com](mailto:tech@immunoway.com)  
Telephone: 877-594-3616 (Toll Free), 408-747-0185  
Website: <http://www.immunoway.com>  
Address: 2200 Ringwood Ave San Jose, CA 95131 USA



Please scan the QR code  
to access additional  
product information:  
**SNAP 23 Rabbit pAb**