

DCI Rabbit pAb

CatalogNo: YT5229

| Key Features

Host Species

- Rabbit

Reactivity

- Human,Rat,Mouse,

Applications

- WB,IHC,IF,ELISA

MW

- 30kD (Observed)

Isotype

- IgG

| Recommended Dilution Ratios

WB 1:500-1:2000

IHC: 1:100-300

ELISA 1:20000

IF 1:50-200

| Storage

Storage* -15°C to -25°C/1 year(Do not lower than -25°C)

Formulation Liquid in PBS containing 50% glycerol, 0.5% BSA and 0.02% sodium azide.

| Basic Information

Clonality Polyclonal

| Immunogen Information

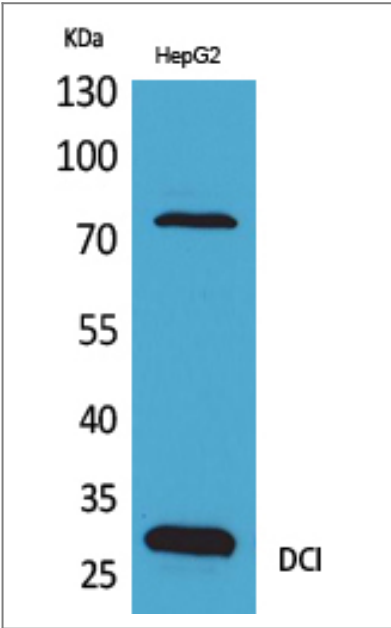
Immunogen Synthesized peptide derived from DCI . at AA range: c-terminal

Specificity DCI Polyclonal Antibody detects endogenous levels of DCI protein.

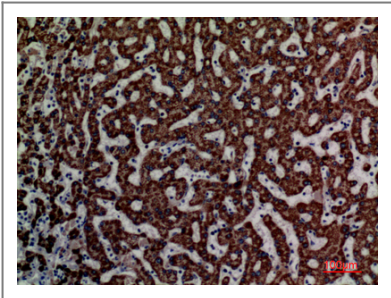
| Target Information

Gene name	ECI1		
Protein Name	Enoyl-CoA delta isomerase 1 mitochondrial		
	Organism	Gene ID	UniProt ID
	Human	1632 ;	P42126 ;
	Mouse		P42125 ;
Cellular Localization	Mitochondrion matrix .		
Tissue specificity	Expressed in liver (at protein level).		
Function	Catalytic activity:(3Z)-dodec-3-enoyl-CoA = (2E)-dodec-2-enoyl-CoA.,Function:Able to isomerize both 3-cis and 3-trans double bonds into the 2-trans form in a range of enoyl-CoA species.,pathway:Lipid metabolism; fatty acid beta-oxidation.,similarity:Belongs to the enoyl-CoA hydratase/isomerase family.,subunit:Homotrimer.,		

| Validation Data



Western Blot analysis of HepG2 cells using DCI Polyclonal Antibody. Secondary antibody(catalog#:RS0002) was diluted at 1:20000



Immunohistochemical analysis of paraffin-embedded human-liver, antibody was diluted at 1:100

| Contact information

Orders: order@immunoway.com
Support: tech@immunoway.com
Telephone: 877-594-3616 (Toll Free), 408-747-0185
Website: <http://www.immunoway.com>
Address: 2200 Ringwood Ave San Jose, CA 95131 USA



Please scan the QR code
to access additional
product information:
DCI Rabbit pAb

For Research Use Only. Not for Use in Diagnostic Procedures.

[Antibody](#) | [ELISA Kits](#) | [Protein](#) | [Reagents](#)