

## HDC Rabbit pAb

CatalogNo: YT5225

### | Key Features

#### Host Species

- Rabbit

#### Reactivity

- Human, Mouse, Rat

#### Applications

- WB, IHC, IF, ELISA

#### MW

- 72kD (Observed)

#### Isotype

- IgG

### | Recommended Dilution Ratios

**WB 1:500-1:2000**

**IHC: 1:100-300**

**ELISA 1:20000**

**IF 1:50-200**

### | Storage

#### Storage\*

-15°C to -25°C/1 year (Do not lower than -25°C)

#### Formulation

Liquid in PBS containing 50% glycerol, 0.5% BSA and 0.02% sodium azide.

### | Basic Information

#### Clonality

Polyclonal

### | Immunogen Information

#### Immunogen

The antiserum was produced against synthesized peptide derived from the Internal region of human HDC. AA range: 201-250

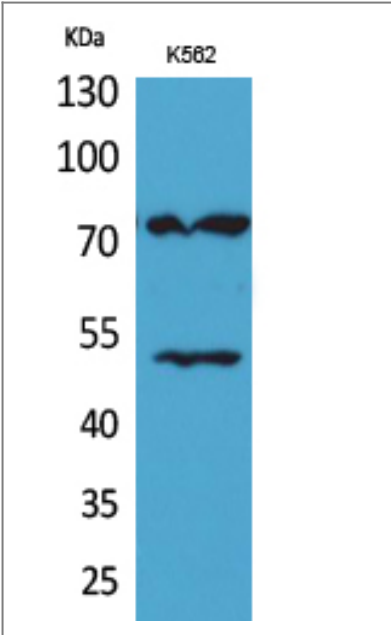
#### Specificity

HDC Polyclonal Antibody detects endogenous levels of HDC protein.

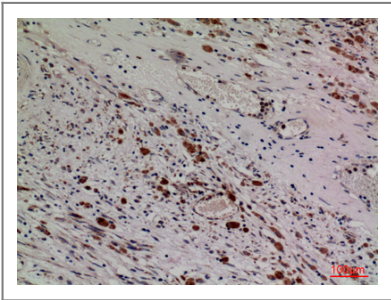
### | Target Information

Gene name	HDC		
Protein Name	Histidine decarboxylase		
	Organism	Gene ID	UniProt ID
	Human	<a href="#">3067</a> ;	<a href="#">P19113</a> ;
	Mouse	<a href="#">15186</a> ;	<a href="#">P23738</a> ;
	Rat		<a href="#">P16453</a> ;
Cellular Localization	cytosol,		
Tissue specificity	Leukemia,		
Function	Catalytic activity:L-histidine = histamine + CO(2).,cofactor:Pyridoxal phosphate.,pathway:Amine and polyamine biosynthesis; histamine biosynthesis; histamine from L-histidine: step 1/1.,similarity:Belongs to the group II decarboxylase family.,subunit:Homodimer.,		

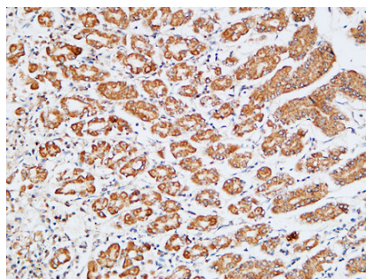
Validation Data



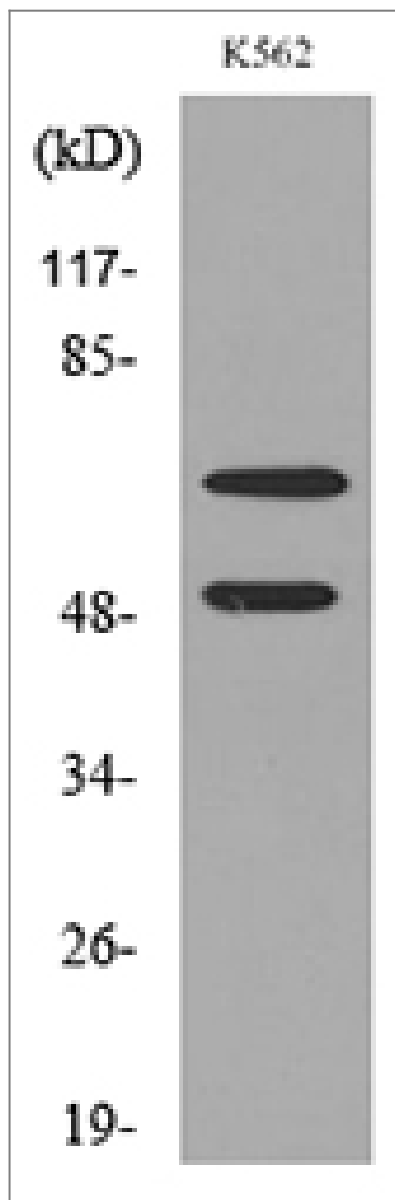
Western Blot analysis of K562 cells using HDC Polyclonal Antibody. Secondary antibody(catalog#:RS0002) was diluted at 1:20000



Immunohistochemical analysis of paraffin-embedded human-brain, antibody was diluted at 1:100



Immunohistochemical analysis of paraffin-embedded Human stomach. 1, Antibody was diluted at 1:200(4° overnight). 2, High-pressure and temperature EDTA, pH8.0 was used for antigen retrieval. 3,Secondary antibody was diluted at 1:200(room temperature, 30min).



Western blot analysis of lysate from K562 cells, using HDC Antibody.

## Contact information

Orders: [order@immunoway.com](mailto:order@immunoway.com)  
 Support: [tech@immunoway.com](mailto:tech@immunoway.com)  
 Telephone: 877-594-3616 (Toll Free), 408-747-0185  
 Website: <http://www.immunoway.com>  
 Address: 2200 Ringwood Ave San Jose, CA 95131 USA



Please scan the QR code to access additional product information:  
**HDC Rabbit pAb**

