

ADM Rabbit pAb

CatalogNo: YT5202

| Key Features

Host Species

- Rabbit

Reactivity

- Human,Rat

Applications

- WB,IHC,IF,ELISA

MW

- 20kD (Observed)

Isotype

- IgG

| Recommended Dilution Ratios

WB 1:500-1:2000

IHC: 1:100-300

ELISA 1:20000

IF 1:50-200

| Storage

Storage*

-15°C to -25°C/1 year(Do not lower than -25°C)

Formulation

Liquid in PBS containing 50% glycerol, 0.5% BSA and 0.02% sodium azide.

| Basic Information

Clonality

Polyclonal

| Immunogen Information

Immunogen

The antiserum was produced against synthesized peptide derived from the Internal region of human ADM. AA range:101-150

Specificity

ADM Polyclonal Antibody detects endogenous levels of ADM protein.

| Target Information

Gene name ADM

Protein Name ADM

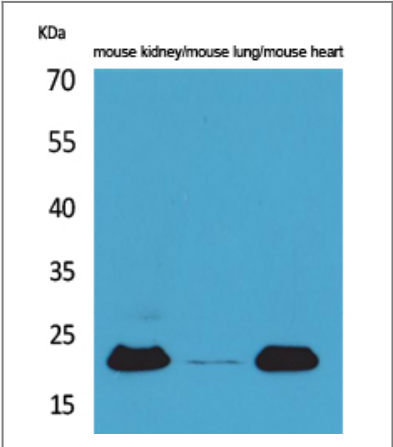
Organism	Gene ID	UniProt ID
Human	133 ;	P35318 ;
Rat	25026 ;	P43145 ;

Cellular Localization Secreted.

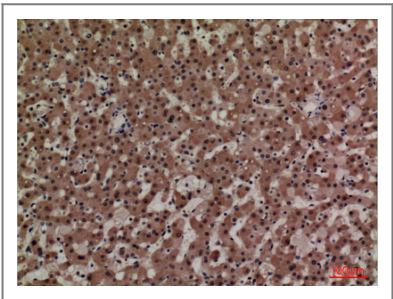
Tissue specificity Highest levels found in pheochromocytoma and adrenal medulla. Also found in lung, ventricle and kidney tissues.

Function:AM and PAMP are potent hypotensive and vasodilator agents. Numerous actions have been reported most related to the physiologic control of fluid and electrolyte homeostasis. In the kidney, am is diuretic and natriuretic, and both am and pamp inhibit aldosterone secretion by direct adrenal actions. In pituitary gland, both peptides at physiologically relevant doses inhibit basal ACTH secretion. Both peptides appear to act in brain and pituitary gland to facilitate the loss of plasma volume, actions which complement their hypotensive effects in blood vessels.,similarity:Belongs to the adrenomedullin family.,tissue specificity:Highest levels found in pheochromocytoma and adrenal medulla. Also found in lung, ventricle and kidney tissues.,

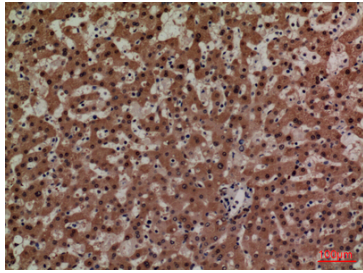
Validation Data



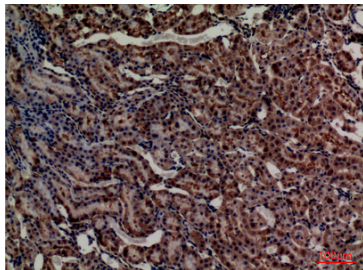
Western Blot analysis of mouse kidney, mouse lung, mouse heart cells using ADM Polyclonal Antibody. Secondary antibody(catalog#:RS0002) was diluted at 1:20000



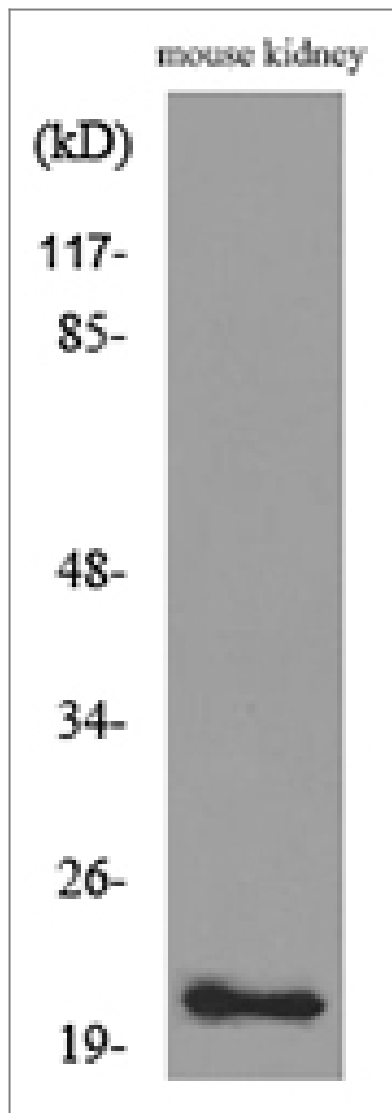
Immunohistochemical analysis of paraffin-embedded human-liver, antibody was diluted at 1:100



Immunohistochemical analysis of paraffin-embedded human-liver, antibody was diluted at 1:100



Immunohistochemical analysis of paraffin-embedded rat-kidney, antibody was diluted at 1:100



Western blot analysis of lysate from mouse kidney cells, using ADM Antibody.

Orders: order@immunoway.com
Support: tech@immunoway.com
Telephone: 877-594-3616 (Toll Free), 408-747-0185
Website: http://www.immunoway.com
Address: 2200 Ringwood Ave San Jose, CA 95131 USA



Please scan the QR code
to access additional
product information:
ADM Rabbit pAb

For Research Use Only. Not for Use in Diagnostic Procedures.

[Antibody](#) | [ELISA Kits](#) | [Protein](#) | [Reagents](#)