

## CYPA Rabbit pAb

CatalogNo: YT5197

### Key Features

#### Host Species

- Rabbit

#### Reactivity

- Human, Mouse, Rat

#### Applications

- WB, IHC, IF, ELISA

#### MW

- 18kD (Observed)

#### Isotype

- IgG

### Recommended Dilution Ratios

**WB 1:500-1:2000**

**IHC: 1:100-300**

**ELISA 1:20000**

**IF 1:50-200**

### Storage

#### Storage\*

-15°C to -25°C/1 year (Do not lower than -25°C)

#### Formulation

Liquid in PBS containing 50% glycerol, 0.5% BSA and 0.02% sodium azide.

### Basic Information

#### Clonality

Polyclonal

### Immunogen Information

#### Immunogen

The antiserum was produced against synthesized peptide derived from the Internal region of human PPIA. AA range: 51-100

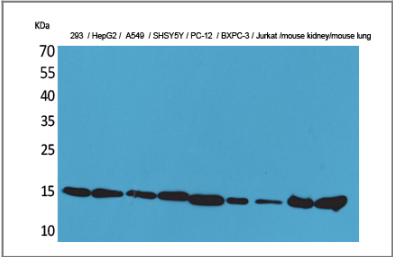
#### Specificity

CyPA Polyclonal Antibody detects endogenous levels of CyPA protein.

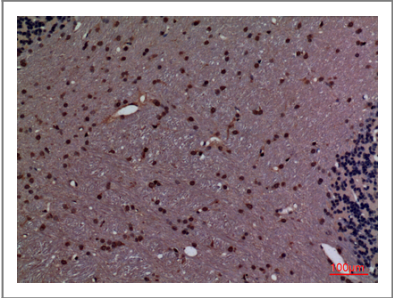
### Target Information

Gene name	PPIA		
Protein Name	Peptidyl-prolyl cis-trans isomerase A		
	Organism	Gene ID	UniProt ID
	Human	<a href="#">5478;</a>	<a href="#">P62937;</a>
	Mouse	<a href="#">268373;</a>	<a href="#">P17742;</a>
	Rat	<a href="#">100360977;</a>	<a href="#">P10111;</a>
Cellular Localization	Cytoplasm . Secreted . Nucleus . Secretion occurs in response to oxidative stress in vascular smooth muscle through a vesicular secretory pathway that includes Rho GTPase signaling, actin remodeling, and myosin II activation. .		
Tissue specificity	Blood,Bone marrow,Brain,Cajal-Retzius cell,Cervix,Colon,Epithelium,Fetal br		
Function	Catalytic activity:Peptidylproline (omega=180) = peptidylproline (omega=0).,enzyme regulation:Binds cyclosporin A (CsA). CsA mediates some of its effects via an inhibitory action on PPIase.,Function:PPIases accelerate the folding of proteins.,Function:PPIases accelerate the folding of proteins. It catalyzes the cis-trans isomerization of proline imidic peptide bonds in oligopeptides.,online information:Cyclophilin entry,similarity:Belongs to the cyclophilin-type PPIase family.,similarity:Belongs to the cyclophilin-type PPIase family. PPIase A subfamily.,similarity:Contains 1 PPIase cyclophilin-type domain.,subunit:Interacts with HIV-1 Capsid protein.,		

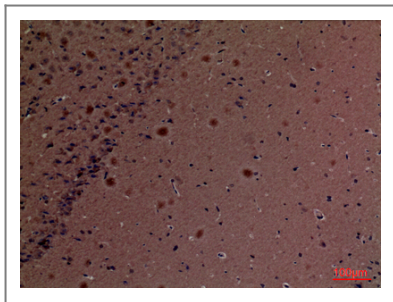
Validation Data



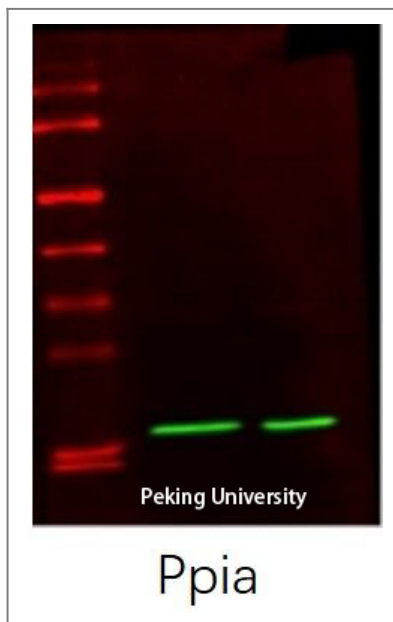
Western Blot analysis of 293, HepG2, A549, SHSY5Y, PC-12, BXP-3, Jurkat, mouse kidney, mouse lung cells using CyPA Polyclonal Antibody. Secondary antibody(catalog#:RS0002) was diluted at 1:20000



Immunohistochemical analysis of paraffin-embedded rat-brain, antibody was diluted at 1:100



Immunohistochemical analysis of paraffin-embedded mouse-brain, antibody was diluted at 1:100



The picture was kindly provided by our customer

## Contact information

Orders: [order@immunoway.com](mailto:order@immunoway.com)  
Support: [tech@immunoway.com](mailto:tech@immunoway.com)  
Telephone: 877-594-3616 (Toll Free), 408-747-0185  
Website: <http://www.immunoway.com>  
Address: 2200 Ringwood Ave San Jose, CA 95131 USA



Please scan the QR code to access additional product information:  
**CYPA Rabbit pAb**

For Research Use Only. Not for Use in Diagnostic Procedures.

[Antibody](#) | [ELISA Kits](#) | [Protein](#) | [Reagents](#)