

HoxD3 Rabbit pAb

CatalogNo: YT5195

Key Features

Host Species

- Rabbit

Reactivity

- Human, Mouse, Rat

Applications

- WB, IHC, IF, ELISA

MW

- 45kD (Observed)

Isotype

- IgG

Recommended Dilution Ratios

WB 1:500-1:2000

IHC: 1:100-300

ELISA 1:20000

IF 1:50-200

Storage

Storage*

-15°C to -25°C/1 year (Do not lower than -25°C)

Formulation

Liquid in PBS containing 50% glycerol, 0.5% BSA and 0.02% sodium azide.

Basic Information

Clonality

Polyclonal

Immunogen Information

Immunogen

The antiserum was produced against synthesized peptide derived from the Internal region of human HOXD3. AA range: 211-260

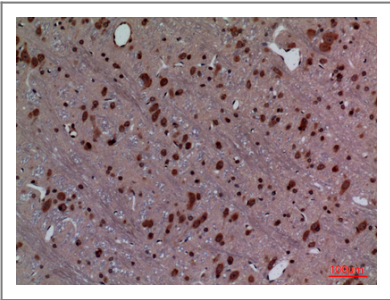
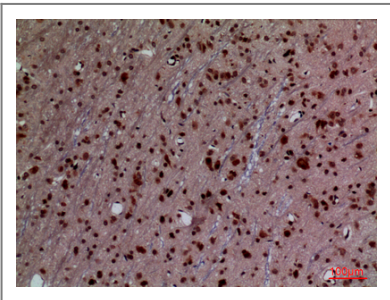
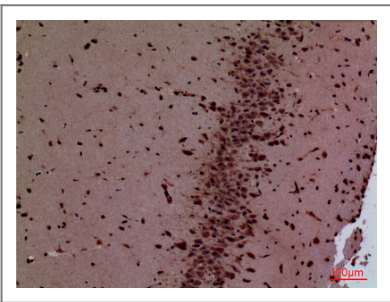
Specificity

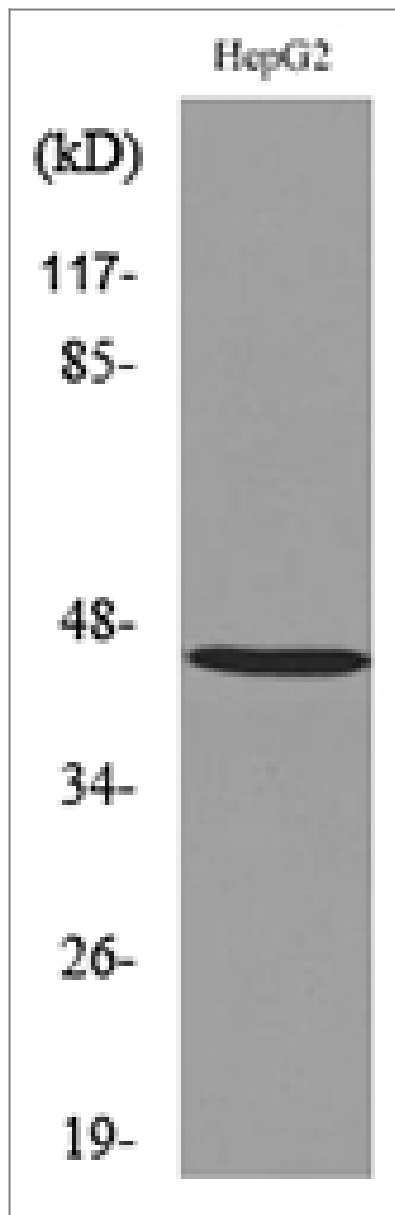
HoxD3 Polyclonal Antibody detects endogenous levels of HoxD3 protein.

Target Information

Gene name	HOXD3		
Protein Name	Homeobox protein Hox-D3		
	Organism	Gene ID	UniProt ID
	Human	3232;	P31249;
	Mouse	15434;	P09027;
	Rat		P18867;
Cellular Localization	Nucleus.		
Tissue specificity	Brain,Lung,		
Function	Caution:It is uncertain whether Met-1 or Met-17 is the initiator.,Function:Sequence-specific transcription factor which is part of a developmental regulatory system that provides cells with specific positional identities on the anterior-posterior axis.,similarity:Belongs to the Antp homeobox family.,similarity:Contains 1 homeobox DNA-binding domain.,		

| Validation Data

	Immunohistochemical analysis of paraffin-embedded rat-brain, antibody was diluted at 1:100
	Immunohistochemical analysis of paraffin-embedded rat-brain, antibody was diluted at 1:100
	Immunohistochemical analysis of paraffin-embedded mouse-brain, antibody was diluted at 1:100



Western blot analysis of lysate from HepG2 cells, using HOXD3 Antibody.

Contact information

Orders: order@immunoway.com
Support: tech@immunoway.com
Telephone: 877-594-3616 (Toll Free), 408-747-0185
Website: <http://www.immunoway.com>
Address: 2200 Ringwood Ave San Jose, CA 95131 USA



Please scan the QR code
to access additional
product information:
HoxD3 Rabbit pAb

For Research Use Only. Not for Use in Diagnostic Procedures.

[Antibody](#) | [ELISA Kits](#) | [Protein](#) | [Reagents](#)