

SP-A Rabbit pAb

CatalogNo: YT5191

Key Features

Host Species

- Rabbit

Reactivity

- Human, Mouse, Rat

Applications

- WB, IHC, IF, ELISA

MW

- 34kD (Observed)

Isotype

- IgG

Recommended Dilution Ratios

WB 1:500-1:2000

IHC: 1:100-300

ELISA 1:20000

IF 1:50-200

Storage

Storage*

-15°C to -25°C/1 year (Do not lower than -25°C)

Formulation

Liquid in PBS containing 50% glycerol, 0.5% BSA and 0.02% sodium azide.

Basic Information

Clonality

Polyclonal

Immunogen Information

Immunogen

The antiserum was produced against synthesized peptide derived from the Internal region of human SFTP1/2. AA range:141-190

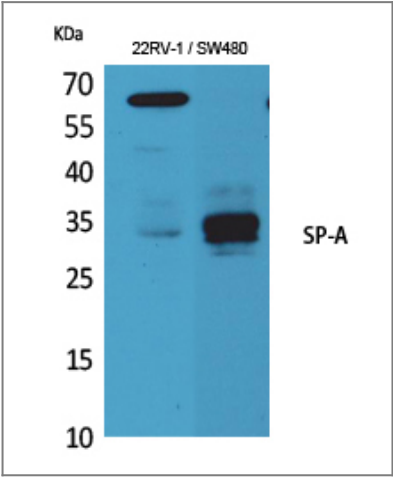
Specificity

SP-A Polyclonal Antibody detects endogenous levels of SP-A protein.

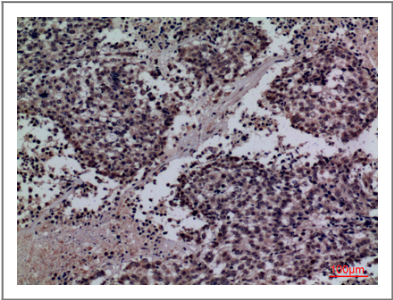
Target Information

Gene name	SFTPA2/SFTPA1		
Protein Name	Pulmonary surfactant-associated protein A2/Pulmonary surfactant-associated protein A1		
	Organism	Gene ID	UniProt ID
	Human	729238 ;	Q8IWL1 ;
	Rat	24773 ;	P08427 ;
Cellular Localization	Secreted . Secreted, extracellular space, extracellular matrix. Secreted, extracellular space, surface film.		
Function	Function:In presence of calcium ions, it binds to surfactant phospholipids and contributes to lower the surface tension at the air-liquid interface in the alveoli of the mammalian lung and is essential for normal respiration.,miscellaneous:Pulmonary surfactant consists of 90% lipid and 10% protein. There are 4 surfactant-associated proteins: 2 collagenous, carbohydrate-binding glycoproteins (SP-A and SP-D) and 2 small hydrophobic proteins (SP-B and SP-C).,polymorphism:At least 6 alleles of SFTPA2 are known: 1A, 1A(0), 1A(1), 1A(2), 1A(3) and 1A(4). The sequence shown is that of allele 1A(0).,similarity:Belongs to the SFTPA family.,similarity:Contains 1 C-type lectin domain.,similarity:Contains 1 collagen-like domain.,subunit:Oligomeric complex of 6 set of homotrimers.,		

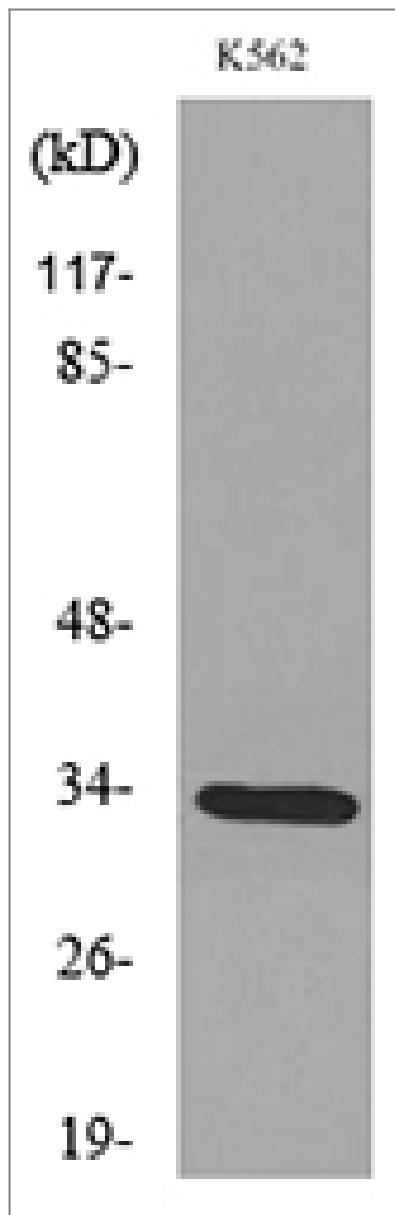
Validation Data



Western Blot analysis of 22RV-1 and SW480 cell lysis, mouse lung cells using SP-A Polyclonal Antibody. Secondary antibody(catalog#:RS0002) was diluted at 1:20000



Immunohistochemical analysis of paraffin-embedded human-lung-cancer, antibody was diluted at 1:100



Western blot analysis of lysate from K562 cells, using SFTP1/2 Antibody.

Contact information

Orders: order@immunoway.com
Support: tech@immunoway.com
Telephone: 877-594-3616 (Toll Free), 408-747-0185
Website: <http://www.immunoway.com>
Address: 2200 Ringwood Ave San Jose, CA 95131 USA



Please scan the QR code
to access additional
product information:
SP-A Rabbit pAb

For Research Use Only. Not for Use in Diagnostic Procedures.

[Antibody](#) | [ELISA Kits](#) | [Protein](#) | [Reagents](#)