

FGF-18 Rabbit pAb

CatalogNo: YT5181

Orthogonal Validated 

Key Features

Host Species

- Rabbit

Reactivity

- Human, Mouse, Rat, Sheep

Applications

- WB, IHC, IF, ELISA

MW

- 28kD (Observed)

Isotype

- IgG

Recommended Dilution Ratios

WB 1:500-1:2000**IHC: 1:100-300****ELISA 1:20000****IF 1:50-200**

Storage

Storage*

-15°C to -25°C/1 year(Do not lower than -25°C)

Formulation

Liquid in PBS containing 50% glycerol, 0.5% BSA and 0.02% sodium azide.

Basic Information

Clonality

Polyclonal

Immunogen Information

Immunogen

The antiserum was produced against synthesized peptide derived from the C-terminal region of human FGF18. AA range:158-207

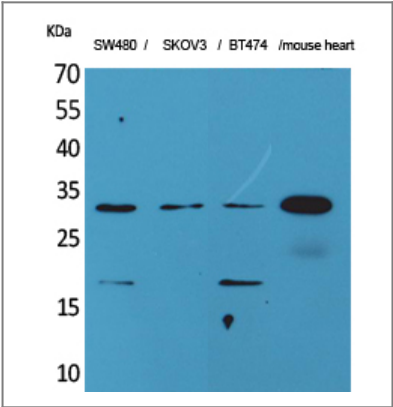
Specificity

FGF-18 Polyclonal Antibody detects endogenous levels of FGF-18 protein.

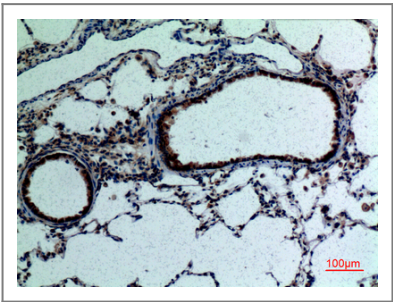
Target Information

Gene name	FGF18		
Protein Name	Fibroblast growth factor 18		
	Organism	Gene ID	UniProt ID
	Human	8817 ;	076093 ;
	Mouse	14172 ;	089101 ;
	Rat	29369 ;	088182 ;
Cellular Localization	Secreted .		
Tissue specificity	Lung,Ovary,		
Function	Function:Stimulates hepatic and intestinal proliferation.,similarity:Belongs to the heparin-binding growth factors family.,		

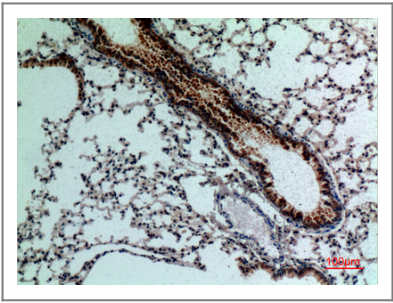
| Validation Data



Western Blot analysis of SW480, SKOV3, BT474, mouse heart cells using FGF-18 Polyclonal Antibody. Secondary antibody(catalog#:RS0002) was diluted at 1:20000 cells nucleus extracted by Minute TM Cytoplasmic and Nuclear Fractionation kit (SC-003,Inventbiotech,MN,USA).



Immunohistochemical analysis of paraffin-embedded rat-lung, antibody was diluted at 1:100



Immunohistochemical analysis of paraffin-embedded mouse-lung, antibody was diluted at 1:100

| Contact information

Orders: order@immunoway.com
Support: tech@immunoway.com
Telephone: 877-594-3616 (Toll Free), 408-747-0185
Website: <http://www.immunoway.com>
Address: 2200 Ringwood Ave San Jose, CA 95131 USA



Please scan the QR code
to access additional
product information:
FGF-18 Rabbit pAb

For Research Use Only. Not for Use in Diagnostic Procedures.

[Antibody](#) | [ELISA Kits](#) | [Protein](#) | [Reagents](#)