

IFN- α 1 Rabbit pAb

CatalogNo: YT5170

Orthogonal Validated 

Key Features

Host Species

- Rabbit

Reactivity

- Human

Applications

- WB, ELISA

MW

- 22kD (Observed)

Isotype

- IgG

Recommended Dilution Ratios

WB 1:500-1:2000**ELISA 1:20000****Not yet tested in other applications.**

Storage

Storage*

-15°C to -25°C/1 year(Do not lower than -25°C)

Formulation

Liquid in PBS containing 50% glycerol, 0.5% BSA and 0.02% sodium azide.

Basic Information

Clonality

Polyclonal

Immunogen Information

Immunogen

The antiserum was produced against synthesized peptide derived from the C-terminal region of human IFNA1/13. AA range:140-189

SpecificityIFN- α 1 Polyclonal Antibody detects endogenous levels of IFN- α 1 protein.

Target Information

Gene name IFNA1/IFNA13

Protein Name Interferon alpha-1/13

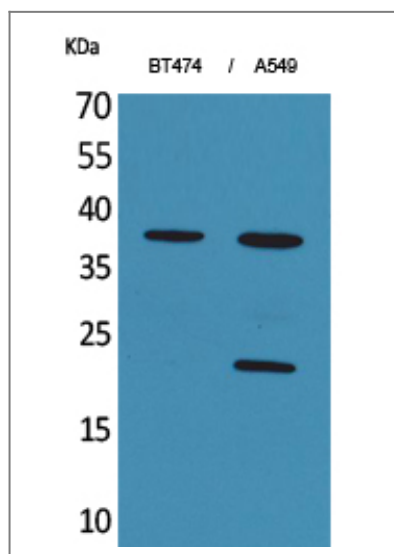
Organism	Gene ID	UniProt ID
Human	3439;	P01562;
Mouse		P01572;

Cellular Localization Secreted.

Tissue specificity Cerebellum,Leukocyte,

Function Function:Produced by macrophages, IFN-alpha have antiviral activities. Interferon stimulates the production of two enzymes: a protein kinase and an oligoadenylate synthetase.,miscellaneous:Interferons alpha-1 and alpha-13 have identical protein sequences.,polymorphism:Two forms exist; alpha-1a (shown here) and alpha-1b.,similarity:Belongs to the alpha/beta interferon family.,

Validation Data



Western Blot analysis of BT474, A549 cells using IFN- α 1 Polyclonal Antibody. Secondary antibody(catalog#:RS0002) was diluted at 1:20000

Contact information

Orders: order@immunoway.com
Support: tech@immunoway.com
Telephone: 877-594-3616 (Toll Free), 408-747-0185
Website: <http://www.immunoway.com>
Address: 2200 Ringwood Ave San Jose, CA 95131 USA



Please scan the QR code to access additional product information:
IFN- α 1 Rabbit pAb

