

TFPI-2 Rabbit pAb

CatalogNo: YT5159

Orthogonal Validated 

Key Features

Host Species

- Rabbit

Reactivity

- Human, Mouse

Applications

- WB, ELISA

MW

- 13kD (Observed)

Isotype

- IgG

Recommended Dilution Ratios

WB 1:500-1:2000**ELISA 1:20000****Not yet tested in other applications.**

Storage

Storage*

-15°C to -25°C/1 year (Do not lower than -25°C)

Formulation

Liquid in PBS containing 50% glycerol, 0.5% BSA and 0.02% sodium azide.

Basic Information

Clonality

Polyclonal

Immunogen Information

Immunogen

The antiserum was produced against synthesized peptide derived from the C-terminal region of human TFPI2. AA range: 186-235

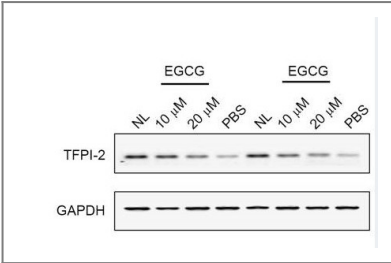
Specificity

TFPI-2 Polyclonal Antibody detects endogenous levels of TFPI-2 protein.

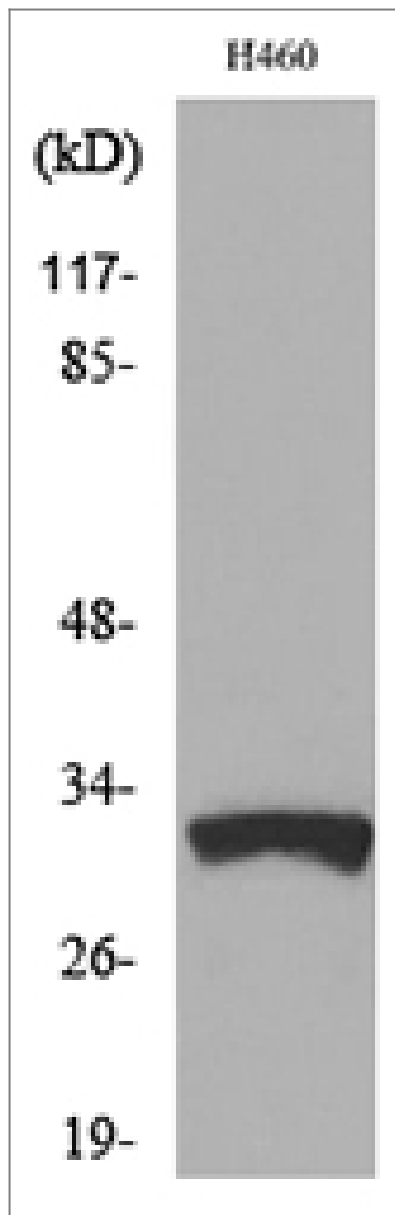
Target Information

Gene name	TFPI2		
Protein Name	Tissue factor pathway inhibitor 2		
	Organism	Gene ID	UniProt ID
	Human	7980 ;	P48307 ;
	Mouse		O35536 ;
Cellular Localization	Secreted.		
Tissue specificity	Umbilical vein endothelial cells, liver, placenta, heart, pancreas, and maternal serum at advanced pregnancy.		
Function	Domain:This inhibitor contains three inhibitory domains.,Function:May play a role in the regulation of plasmin-mediated matrix remodeling. Inhibits trypsin, plasmin, factor VIIa/tissue factor and weakly factor Xa. Has no effect on thrombin.,similarity:Contains 2 BPTI/Kunitz inhibitor domains.,similarity:Contains 3 BPTI/Kunitz inhibitor domains.,tissue specificity:Umbilical vein endothelial cells, liver, placenta, heart, pancreas, and maternal serum at advanced pregnancy.,		

| Validation Data



Feng, Chenchen, et al. "Epigallocatechin gallate inhibits the growth and promotes the apoptosis of bladder cancer cells." Experimental and therapeutic medicine 14.4 (2017): 3513-3518.



Western blot analysis of lysate from H460 cells, using TFPI2 Antibody.

Contact information

Orders: order@immunoway.com
Support: tech@immunoway.com
Telephone: 877-594-3616 (Toll Free), 408-747-0185
Website: <http://www.immunoway.com>
Address: 2200 Ringwood Ave San Jose, CA 95131 USA



Please scan the QR code
to access additional
product information:
TFPI-2 Rabbit pAb

For Research Use Only. Not for Use in Diagnostic Procedures.

[Antibody](#) | [ELISA Kits](#) | [Protein](#) | [Reagents](#)