

## BRMS-1 Rabbit pAb

CatalogNo: YT5158

### Key Features

#### Host Species

- Rabbit

#### Reactivity

- Human, Mouse, Rat

#### Applications

- WB, ELISA

#### MW

- 28kD (Observed)

#### Isotype

- IgG

### Recommended Dilution Ratios

**WB 1:500-1:2000**

**ELISA 1:20000**

**Not yet tested in other applications.**

### Storage

**Storage\*** -15°C to -25°C/1 year (Do not lower than -25°C)

**Formulation** Liquid in PBS containing 50% glycerol, 0.5% BSA and 0.02% sodium azide.

### Basic Information

**Clonality** Polyclonal

### Immunogen Information

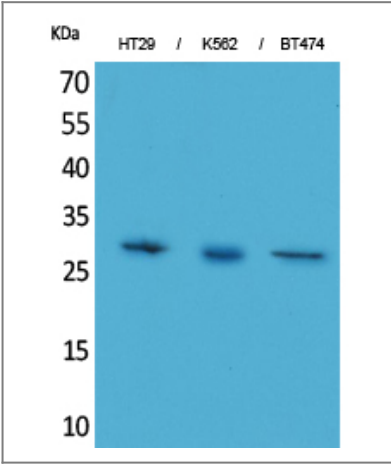
**Immunogen** The antiserum was produced against synthesized peptide derived from the C-terminal region of human BRMS1. AA range: 197-246

**Specificity** BRMS-1 Polyclonal Antibody detects endogenous levels of BRMS-1 protein.

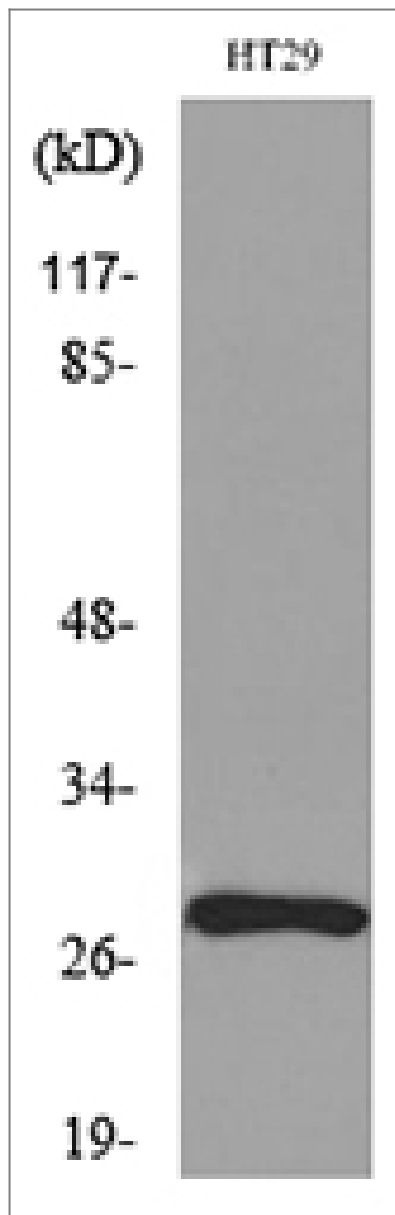
### Target Information

Gene name	BRMS1		
Protein Name	Breast cancer metastasis-suppressor 1		
	Organism	Gene ID	UniProt ID
	Human	<a href="#">25855;</a>	<a href="#">Q9HCU9;</a>
	Mouse	<a href="#">107392;</a>	<a href="#">Q99N20;</a>
	Rat	<a href="#">293668;</a>	<a href="#">Q5M7T3;</a>
Cellular Localization	Nucleus. Cytoplasm. Predominantly nuclear.		
Tissue specificity	Expression levels are higher in term placentas than in early placentas. Low levels of expression observed in normal pregnancies and in molar pregnancies.		
Function	Function:May be a mediator of metastasis suppression in breast carcinoma.,similarity:Belongs to the BRMS1 family.,tissue specificity:Expression levels are higher in term placentas than in early placentas. Low levels of expression observed in normal pregnancies and in molar pregnancies.,		

Validation Data



Western Blot analysis of HT29, K562, BT474 cells using BRMS-1 Polyclonal Antibody. Secondary antibody(catalog#:RS0002) was diluted at 1:20000



Western blot analysis of lysate from HT29 cells, using BRMS1 Antibody.

## Contact information

Orders: [order@immunoway.com](mailto:order@immunoway.com)  
Support: [tech@immunoway.com](mailto:tech@immunoway.com)  
Telephone: 877-594-3616 (Toll Free), 408-747-0185  
Website: <http://www.immunoway.com>  
Address: 2200 Ringwood Ave San Jose, CA 95131 USA



Please scan the QR code  
to access additional  
product information:  
**BRMS-1 Rabbit pAb**