

## Cyclophilin D Rabbit pAb

CatalogNo: YT5144

### Key Features

#### Host Species

- Rabbit

#### Reactivity

- Human, Mouse, Rat

#### Applications

- WB, IHC, IF, ELISA

#### MW

- 40kD (Observed)

#### Isotype

- IgG

### Recommended Dilution Ratios

**WB 1:500-1:2000**

**IHC: 1:100-300**

**ELISA 1:20000**

**IF 1:50-200**

### Storage

#### Storage\*

-15°C to -25°C/1 year (Do not lower than -25°C)

#### Formulation

Liquid in PBS containing 50% glycerol, 0.5% BSA and 0.02% sodium azide.

### Basic Information

#### Clonality

Polyclonal

### Immunogen Information

#### Immunogen

The antiserum was produced against synthesized peptide derived from the C-terminal region of human PPID. AA range: 321-370

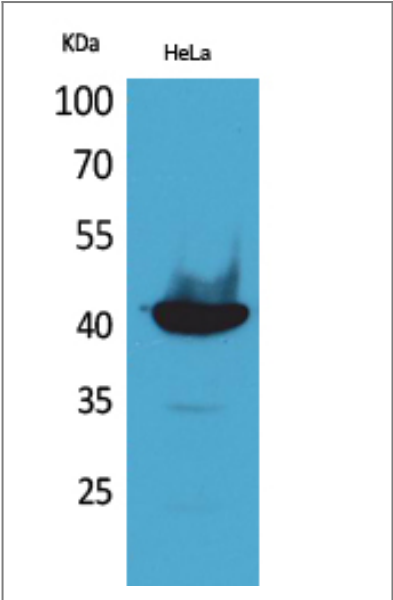
#### Specificity

Cyclophilin D Polyclonal Antibody detects endogenous levels of Cyclophilin D protein.

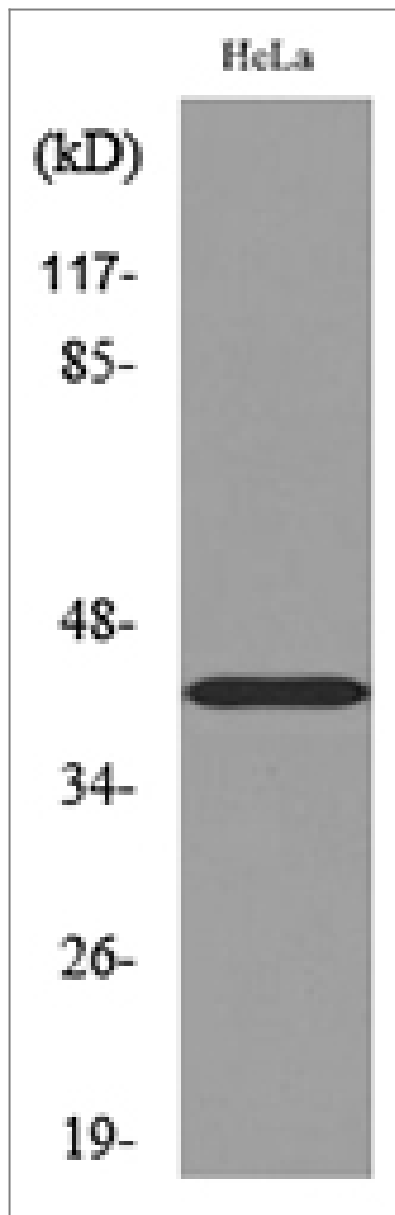
### Target Information

Gene name	PPID		
Protein Name	Peptidyl-prolyl cis-trans isomerase D		
	Organism	Gene ID	UniProt ID
	Human	<a href="#">5481</a> ;	<a href="#">Q08752</a> ;
	Mouse	<a href="#">67738</a> ;	<a href="#">Q9CR16</a> ;
	Rat	<a href="#">361967</a> ;	<a href="#">Q6DGG0</a> ;
Cellular Localization	Cytoplasm . Nucleus, nucleolus . Nucleus, nucleoplasm .		
Tissue specificity	Widely expressed.		
Function	Catalytic activity:Peptidylproline (omega=180) = peptidylproline (omega=0).,enzyme regulation:Less sensitive to inhibition by cyclosporin A than is CYP-18.,Function:PPlases accelerate the folding of proteins.,Function:PPlases accelerate the folding of proteins. It catalyzes the cis-trans isomerization of proline imidic peptide bonds in oligopeptides.,online information:Cyclophilin entry,similarity:Belongs to the cyclophilin-type PPlase family.,similarity:Belongs to the cyclophilin-type PPlase family. PPlase D subfamily.,similarity:Contains 1 PPlase cyclophilin-type domain.,similarity:Contains 3 TPR repeats.,subunit:Binds ESR1.,tissue specificity:Widely expressed.,		

Validation Data



Western Blot analysis of HeLa cells using Cyclophilin D Polyclonal Antibody. Secondary antibody(catalog#:RS0002) was diluted at 1:20000



Western blot analysis of lysate from HeLa cells, using PPID Antibody.

## Contact information

Orders: [order@immunoway.com](mailto:order@immunoway.com)  
Support: [tech@immunoway.com](mailto:tech@immunoway.com)  
Telephone: 877-594-3616 (Toll Free), 408-747-0185  
Website: <http://www.immunoway.com>  
Address: 2200 Ringwood Ave San Jose, CA 95131 USA



Please scan the QR code to access additional product information:  
**Cyclophilin D Rabbit pAb**

For Research Use Only. Not for Use in Diagnostic Procedures.

[Antibody](#) | [ELISA Kits](#) | [Protein](#) | [Reagents](#)