

# Cathepsin L Rabbit pAb

CatalogNo: YT5124

Orthogonal Validated 

## Key Features

### Host Species

- Rabbit

### Reactivity

- Human,Rat,Mouse,

### Applications

- WB,IHC,IF,ELISA

### MW

- 37kD (Observed)

### Isotype

- IgG

## Recommended Dilution Ratios

**WB 1:500-1:2000****IHC: 1:100-300****ELISA 1:20000****IF 1:50-200**

## Storage

### Storage\*

-15°C to -25°C/1 year(Do not lower than -25°C)

### Formulation

Liquid in PBS containing 50% glycerol, 0.5% BSA and 0.02% sodium azide.

## Basic Information

### Clonality

Polyclonal

## Immunogen Information

### Immunogen

Synthesized peptide derived from the Internal region of human Cathepsin L.

### Specificity

Cathepsin L Polyclonal Antibody detects endogenous levels of Cathepsin L protein.

## Target Information

Gene name CTSL1

Protein Name Cathepsin L1

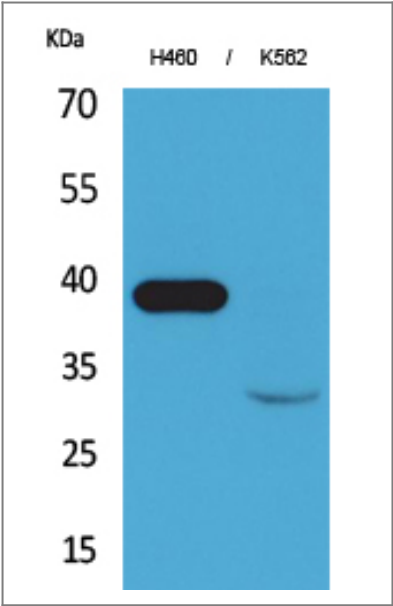
Organism	Gene ID	UniProt ID
Human	<a href="#">1514;</a>	<a href="#">P07711;</a>
Mouse		<a href="#">P06797;</a>

Cellular Localization Lysosome . Apical cell membrane ; Peripheral membrane protein ; Extracellular side . Cytoplasmic vesicle, secretory vesicle, chromaffin granule . Secreted, extracellular space . Secreted . Localizes to the apical membrane of thyroid epithelial cells. Released at extracellular space by activated dendritic cells and macrophages. .; [Isoform 2]: Nucleus . Translation initiation at downstream start sites allows the synthesis of isoforms that are devoid of a signal peptide and do not transit through the endoplasmic reticulum to localize to the nucleus (PubMed:15099520). Nuclear location varies during the cell cycle, with higher levels during S phase (PubMed:15099520). .

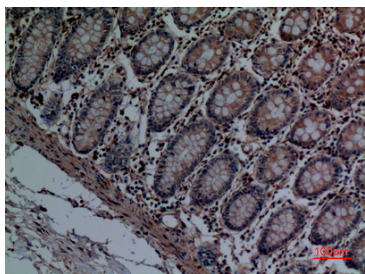
Tissue specificity Cartilage,Colon endothelium,Liver,Plasma,Prostate,

Function Catalytic activity:Specificity close to that of papain. As compared to cathepsin B, cathepsin L exhibits higher activity toward protein substrates, but has little activity on Z-Arg-Arg-NHMec, and no peptidyl-dipeptidase activity.,Function:Important for the overall degradation of proteins in lysosomes.,similarity:Belongs to the peptidase C1 family.,subunit:Dimer of a heavy and a light chain linked by disulfide bonds.,

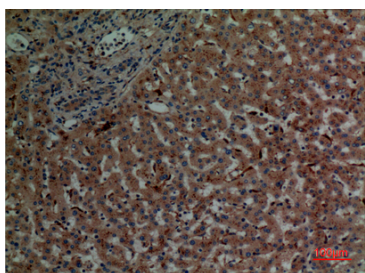
Validation Data



Western Blot analysis of H460, K562 cells using Cathepsin L Polyclonal Antibody. Secondary antibody(catalog#:RS0002) was diluted at 1:20000



Immunohistochemical analysis of paraffin-embedded human-colon, antibody was diluted at 1:100



Immunohistochemical analysis of paraffin-embedded human-liver, antibody was diluted at 1:100

## Contact information

Orders: [order@immunoway.com](mailto:order@immunoway.com)  
Support: [tech@immunoway.com](mailto:tech@immunoway.com)  
Telephone: 877-594-3616 (Toll Free), 408-747-0185  
Website: <http://www.immunoway.com>  
Address: 2200 Ringwood Ave San Jose, CA 95131 USA



Please scan the QR code to access additional product information:  
**Cathepsin L Rabbit pAb**

For Research Use Only. Not for Use in Diagnostic Procedures.

[Antibody](#) | [ELISA Kits](#) | [Protein](#) | [Reagents](#)