

SCP-3 Rabbit pAb

CatalogNo: YT5117

Key Features

Host Species

- Rabbit

Reactivity

- Human, Mouse

Applications

- WB, ELISA, IHC

MW

- 27kD (Observed)

Isotype

- IgG

Recommended Dilution Ratios

WB 1:500-2000**IHC 1:50-300****ELISA 1:2000-20000**

Storage

Storage*

-15°C to -25°C/1 year (Do not lower than -25°C)

Formulation

Liquid in PBS containing 50% glycerol, 0.5% BSA and 0.02% sodium azide.

Basic Information

Clonality

Polyclonal

Immunogen Information

Immunogen

Synthesized peptide derived from the Internal region of human SCP-3.

Specificity

SCP-3 Polyclonal Antibody detects endogenous levels of SCP-3 protein.

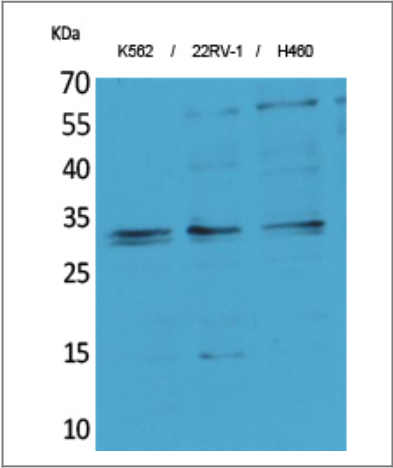
Target Information

Gene name

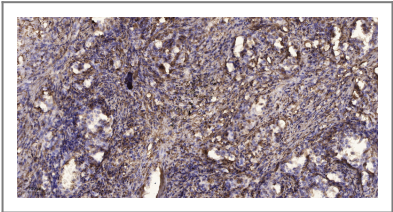
SYCP3

Protein Name	Synaptonemal complex protein 3		
	Organism	Gene ID	UniProt ID
	Human	50511 ;	Q8IZU3 ;
	Mouse	20962 ;	P70281 ;
Cellular Localization	Nucleus . Chromosome . Chromosome, centromere . It is present in early unpaired cores, in the lateral domains of the synaptonemal complex and in the chromosome cores when they separate at diplotene. It is found axial to the metaphase I chromosomes and in association with pairs of sister centromeres. The centromere-associated protein becomes dissociated from the centromeres at anaphase II and is not found in mitotic metaphase centromeres. .		
Tissue specificity	Testis-specific.		
Function	Disease:Defects in SYCP3 are associated with azoospermia due to perturbations of meiosis [MIM:270960].,Function:Component of the transverse filaments of synaptonemal complexes (SCS), formed between homologous chromosomes during meiotic prophase. Has an essential meiotic function in spermatogenesis. May be important for testis development.,similarity:Belongs to the XLR/SYCP3 family.,subcellular location:In tripartite segments of synaptonemal complexes, irrespective of whether these are synapsed or unsynapsed.,subunit:Interacts with SYCP2.,tissue specificity:Testis-specific.,		

Validation Data



Western Blot analysis of K562, 22RV-1, H460 cells using SCP-3 Polyclonal Antibody. Secondary antibody(catalog#:RS0002) was diluted at 1:20000 cells nucleus extracted by Minute TM Cytoplasmic and Nuclear Fractionation kit (SC-003,Inventbiotech,MN,USA).



Immunohistochemical analysis of paraffin-embedded human Squamous cell carcinoma of lung. 1, Antibody was diluted at 1:200(4° overnight). 2, Tris-EDTA,pH9.0 was used for antigen retrieval. 3,Secondary antibody was diluted at 1:200(room temperature, 45min).

Contact information

Orders: order@immunoway.com
Support: tech@immunoway.com
Telephone: 877-594-3616 (Toll Free), 408-747-0185
Website: http://www.immunoway.com
Address: 2200 Ringwood Ave San Jose, CA 95131 USA



Please scan the QR code
to access additional
product information:
SCP-3 Rabbit pAb

For Research Use Only. Not for Use in Diagnostic Procedures.

[Antibody](#) | [ELISA Kits](#) | [Protein](#) | [Reagents](#)