

SCP-2 Rabbit pAb

CatalogNo: YT5116

Key Features

Host Species

- Rabbit

Reactivity

- Human,Rat,Mouse,

Applications

- WB,ELISA,IHC

MW

- 175kD (Observed)

Isotype

- IgG

Recommended Dilution Ratios

WB 1:500-2000

IHC 1:50-300

ELISA 1:2000-20000

Storage

Storage* -15°C to -25°C/1 year(Do not lower than -25°C)

Formulation Liquid in PBS containing 50% glycerol, 0.5% BSA and 0.02% sodium azide.

Basic Information

Clonality Polyclonal

Immunogen Information

Immunogen Synthesized peptide derived from the Internal region of human SCP-2.

Specificity SCP-2 Polyclonal Antibody detects endogenous levels of SCP-2 protein.

Target Information

Gene name SYCP2

Protein Name Synaptonemal complex protein 2

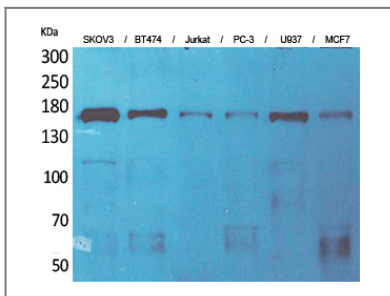
Organism	Gene ID	UniProt ID
Human	10388 ;	Q9BX26 ;
Mouse		Q9CUU3 ;

Cellular Localization Nucleus . Chromosome . In axial/lateral elements of the tripartite segments of synaptonemal complexes. .

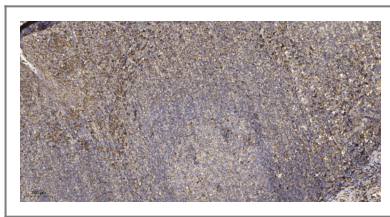
Tissue specificity Kidney,Testis,

Function Function:Major component of the axial/lateral elements of synaptonemal complexes (SCS) during meiotic prophase. May be involved in the organization of chromatin by temporarily binding to DNA scaffold attachment regions. Requires SYCP3, but not SYCP1, in order to be incorporated into the axial/lateral elements.,similarity:Belongs to the SYCP2 family.,subcellular location:In axial/lateral elements of the tripartite segments of synaptonemal complexes.,subunit:Heterodimer with SYCP3. Interacts with SYCP3, SMC1A and SMC3.,

Validation Data



Western Blot analysis of SKOV3, BT474, Jurkat, PC-3, U937, MCF7 cells using SCP-2 Polyclonal Antibody. Secondary antibody(catalog#:RS0002) was diluted at 1:20000 cells nucleus extracted by Minute TM Cytoplasmic and Nuclear Fractionation kit (SC-003, Invent biotech, MN, USA).



Immunohistochemical analysis of paraffin-embedded human tonsil. 1, Antibody was diluted at 1:200(4° overnight). 2, Tris-EDTA, pH9.0 was used for antigen retrieval. 3, Secondary antibody was diluted at 1:200(room temperature, 45min).

Contact information

Orders: order@immunoway.com
Support: tech@immunoway.com
Telephone: 877-594-3616 (Toll Free), 408-747-0185
Website: <http://www.immunoway.com>
Address: 2200 Ringwood Ave San Jose, CA 95131 USA



Please scan the QR code to access additional product information:
SCP-2 Rabbit pAb

