

DNA Pol μ Rabbit pAb

CatalogNo: YT5105

Key Features

Host Species

- Rabbit

Reactivity

- Human, Mouse

Applications

- WB, ELISA

MW

- 54kD (Observed)

Isotype

- IgG

Recommended Dilution Ratios

WB 1:500-1:2000

ELISA 1:40000

Not yet tested in other applications.

Storage

Storage* -15°C to -25°C/1 year (Do not lower than -25°C)

Formulation Liquid in PBS containing 50% glycerol, 0.5% BSA and 0.02% sodium azide.

Basic Information

Clonality Polyclonal

Immunogen Information

Immunogen Synthesized peptide derived from DNA Pol μ . at AA range: 210-290

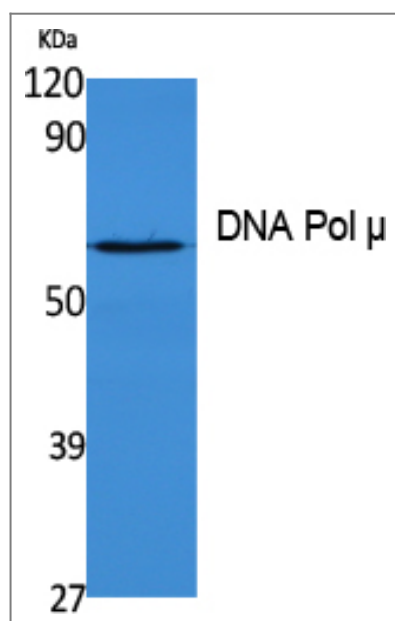
Specificity DNA Pol μ Polyclonal Antibody detects endogenous levels of DNA Pol μ protein.

Target Information

Gene name POLM

Protein Name	DNA-directed DNA/RNA polymerase mu		
	Organism	Gene ID	UniProt ID
	Human	27434;	Q9NP87;
	Mouse		Q9JIW4;
Cellular Localization	Nucleus .		
Tissue specificity	Expressed in a number of tissues. Abundant in thymus.		
Function	Catalytic activity:Deoxynucleoside triphosphate + DNA(n) = diphosphate + DNA(n+1).,cofactor:Magnesium.,Function:Seems to act as an Ig mutase which is responsible for immunoglobulin (Ig) gene hypermutation.,similarity:Belongs to the DNA polymerase type-X family.,similarity:Contains 1 BRCT domain.,tissue specificity:Expressed in a number of tissues. Abundant in thymus.,		

Validation Data



Western Blot analysis of extracts from K562 cells, using DNA Pol μ Polyclonal Antibody. Secondary antibody(catalog#:RS0002) was diluted at 1:20000 cells nucleus extracted by Minute TM Cytoplasmic and Nuclear Fractionation kit (SC-003,Inventbiotech,MN,USA).

Contact information

Orders: order@immunoway.com
 Support: tech@immunoway.com
 Telephone: 877-594-3616 (Toll Free), 408-747-0185
 Website: <http://www.immunoway.com>
 Address: 2200 Ringwood Ave San Jose, CA 95131 USA



Please scan the QR code to access additional product information:
DNA Pol μ Rabbit pAb

