

NTT4 Rabbit pAb

CatalogNo: YT5097

Key Features

Host Species

- Rabbit

Reactivity

- Human, Mouse, Rat

Applications

- WB, ELISA

MW

- 81kD (Observed)

Isotype

- IgG

Storage

Storage* -15°C to -25°C/1 year (Do not lower than -25°C)**Formulation** Liquid in PBS containing 50% glycerol, 0.5% BSA and 0.02% sodium azide.

Recommended Dilution Ratios

WB 1:500-1:2000**ELISA 1:5000****Not yet tested in other applications.**

Basic Information

Clonality Polyclonal

Immunogen Information

Immunogen Synthesized peptide derived from NTT4 . at AA range: 240-320**Specificity** NTT4 Polyclonal Antibody detects endogenous levels of NTT4 protein.

Target Information

Gene name SLC6A17

Protein Name Sodium-dependent neutral amino acid transporter SLC6A17

Organism	Gene ID	UniProt ID
Human	388662;	Q9H1V8;
Mouse	229706;	Q8BJI1;
Rat	613226;	P31662;

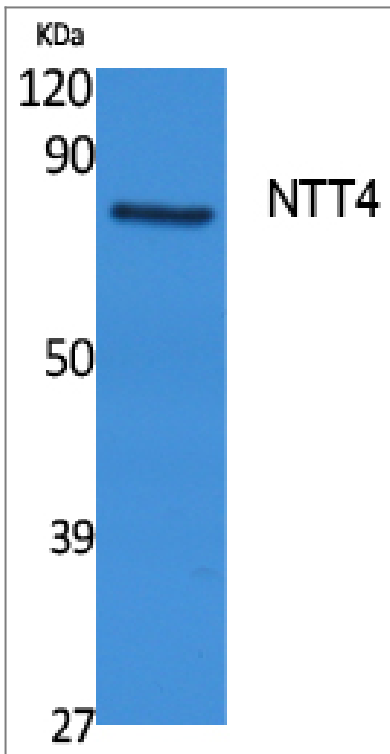
Cellular Localization

Cytoplasmic vesicle, secretory vesicle, synaptic vesicle membrane ; Multi-pass membrane protein . Cell junction, synapse, postsynapse . Cell junction, synapse, presynapse . Localizes at synaptic junctions - at both pre- and post-synaptic sites - particularly in excitatory glutamatergic terminals. .

Tissue specificity Hippocampus,

Function Function:Not yet known, orphan transporter.,similarity:Belongs to the sodium:neurotransmitter symporter (SNF) family.,

Validation Data



Western Blot analysis of extracts from rat stomach, using NTT4 Polyclonal Antibody. Secondary antibody(catalog#:RS0002) was diluted at 1:20000

Contact information

Orders: order@immunoway.com
Support: tech@immunoway.com
Telephone: 877-594-3616 (Toll Free), 408-747-0185
Website: http://www.immunoway.com
Address: 2200 Ringwood Ave San Jose, CA 95131 USA



Please scan the QR code
to access additional
product information:
NTT4 Rabbit pAb

For Research Use Only. Not for Use in Diagnostic Procedures.

[Antibody](#) | [ELISA Kits](#) | [Protein](#) | [Reagents](#)