

## CYP2A6/7/13 Rabbit pAb

CatalogNo: YT5093

### Key Features

#### Host Species

- Rabbit

#### Reactivity

- Human

#### Applications

- WB, ELISA

#### MW

- 56kD (Observed)

#### Isotype

- IgG

### Recommended Dilution Ratios

**WB 1:500-1:2000**

**ELISA 1:40000**

**Not yet tested in other applications.**

### Storage

#### Storage\*

-15°C to -25°C/1 year(Do not lower than -25°C)

#### Formulation

Liquid in PBS containing 50% glycerol, 0.5% BSA and 0.02% sodium azide.

### Basic Information

#### Clonality

Polyclonal

### Immunogen Information

#### Immunogen

Synthesized peptide derived from the Internal region of human CYP2A6/7/13.

#### Specificity

CYP2A6/7/13 Polyclonal Antibody detects endogenous levels of CYP2A6/7/13 protein.

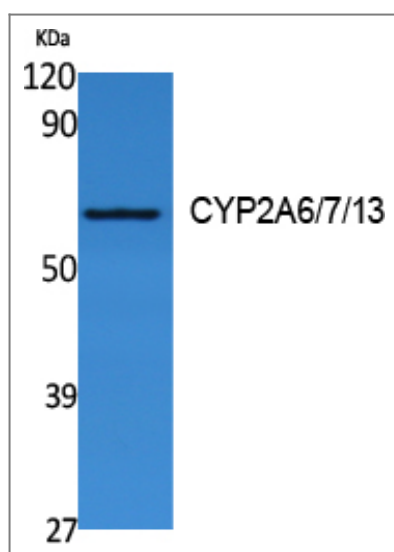
### Target Information

#### Gene name

CYP2A6/CYP2A7/CYP2A13

<b>Protein Name</b>	Cytochrome P450 2A6/Cytochrome P450 2A7/Cytochrome P450 2A13		
	<b>Organism</b>	<b>Gene ID</b>	<b>UniProt ID</b>
	Human	<a href="#">1553</a> ;	<a href="#">P11509</a> ; <a href="#">P20853</a> ; <a href="#">Q16696</a> ;
<b>Cellular Localization</b>	Endoplasmic reticulum membrane; Peripheral membrane protein. Microsome membrane; Peripheral membrane protein.		
<b>Tissue specificity</b>	Liver.		
<b>Function</b>	Catalytic activity:RH + reduced flavoprotein + O(2) = ROH + oxidized flavoprotein + H(2)O.,cofactor:Heme group.,Function:Exhibits a high coumarin 7-hydroxylase activity. Can act in the hydroxylation of the anti-cancer drugs cyclophosphamide and ifosphamide. Competent in the metabolic activation of aflatoxin B1. Constitutes the major nicotine C-oxidase.,induction:By phenobarbital and dexamethasone.,online information:CYP2A6 alleles,online information:CYP2A6 entry,similarity:Belongs to the cytochrome P450 family.,tissue specificity:Liver.,		

## Validation Data



Western Blot analysis of extracts from Jurkat cells, using CYP2A6/7/13 Polyclonal Antibody. Secondary antibody(catalog#:RS0002) was diluted at 1:20000

## Contact information

Orders: [order@immunoway.com](mailto:order@immunoway.com)  
 Support: [tech@immunoway.com](mailto:tech@immunoway.com)  
 Telephone: 877-594-3616 (Toll Free), 408-747-0185  
 Website: <http://www.immunoway.com>  
 Address: 2200 Ringwood Ave San Jose, CA 95131 USA



Please scan the QR code to access additional product information:  
**CYP2A6/7/13 Rabbit pAb**

